

# Chapter 1. Disassembly & Assembly Guide

---

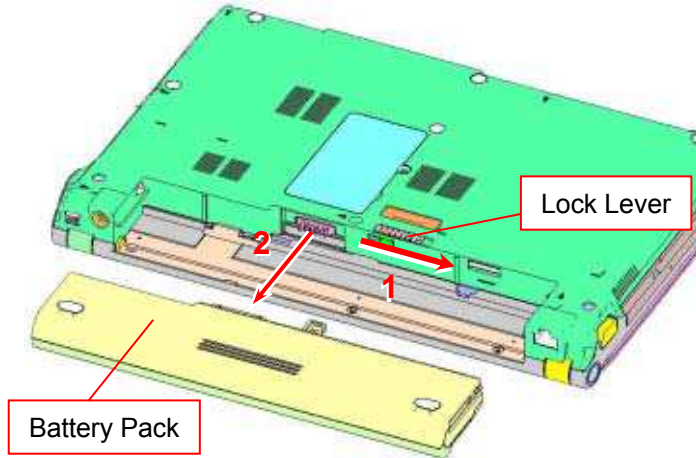
## 1-3. Disassembly & Assembly

### - Main Section -

#### MS-1 Main Section Disassembly

# Battery Pack/Cover

1)



Slide the lock lever in the direction of the arrow 1, and remove the Battery Pack in the direction of the arrow 2.

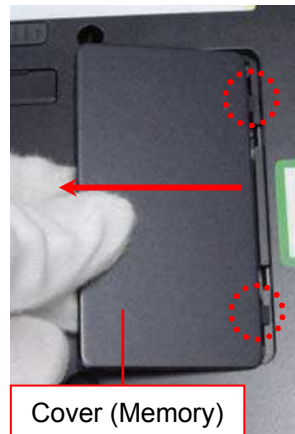
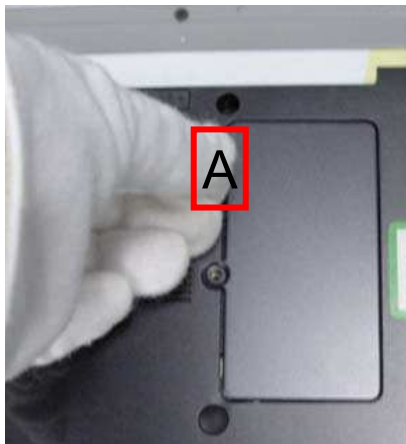
2)

Screw: B14



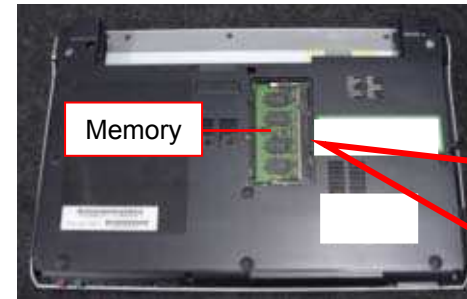
Remove the one screw.

3)



Hook a finger on the A portion, raise the Cover, and remove it in the direction of the arrow.

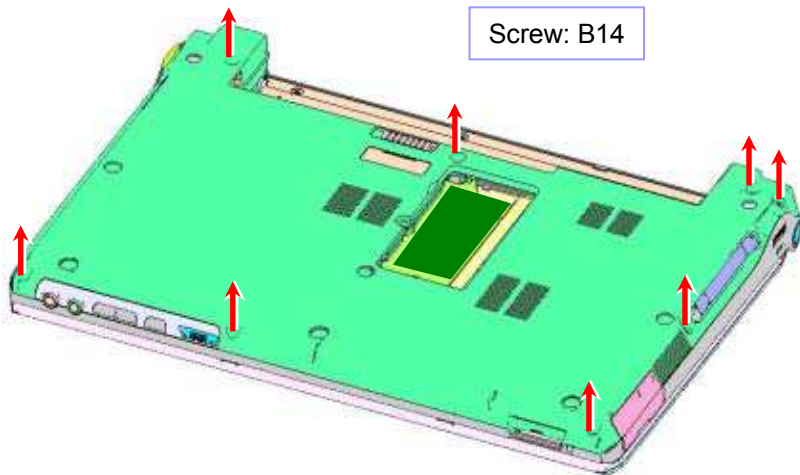
## Remark



The Memory on side B of the Mother Board can be removed.

# Keyboard-1

1)



Remove the eight screws on the bottom.

2)

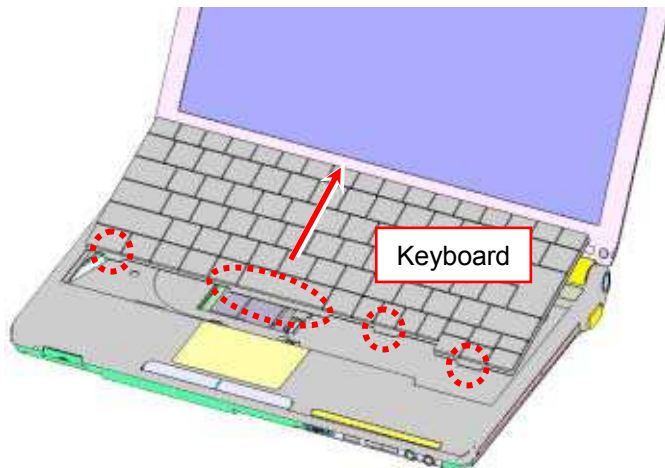


Disengage the detent (four places).

\* Raising the Keyboard, disengage the detents.

\* Detents are located between the [Esc and F1], [F4 and F5], [Insert and Delete], and F12 Key.

3)



Slide the Keyboard in the direction of the arrow to release the detent (four places) on the front.

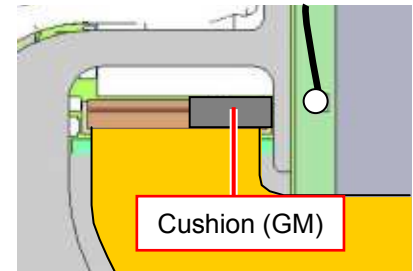
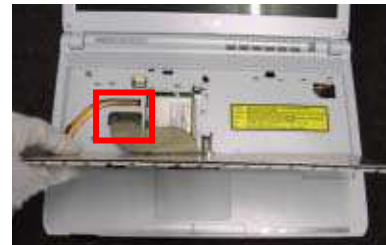
\* The FPC is connected on the backside of the Keyboard.

4)

△8 [ADD]

**Except 1st Model**

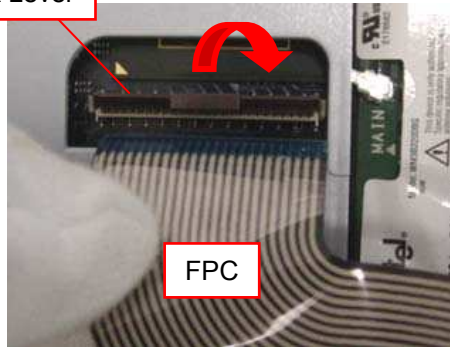
△10 [MA] △16 [MA]



Peel off the Cushion (one place).

## Keyboard-2

5)

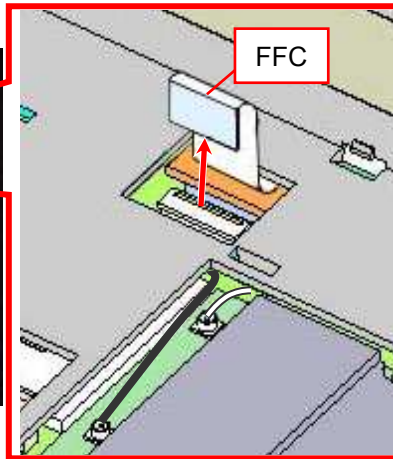
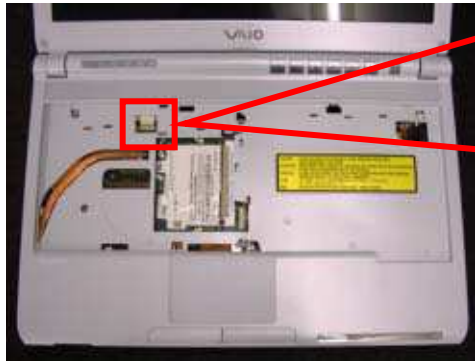
  
Lock Lever

Release the lock, remove the FPC and remove the Keyboard.

\* How to release the lock: Raise the lock lever toward the front.

# Palmrest-1

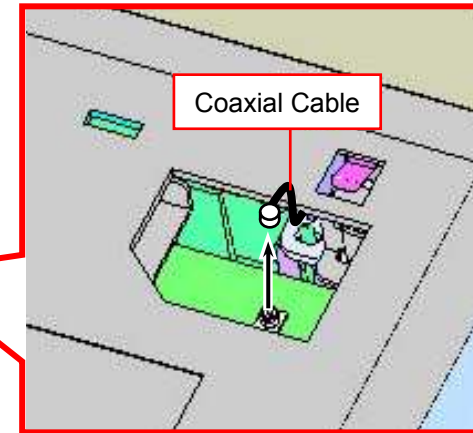
1)



Pull out the FFC (one place) in the direction of the arrow.

2) ⚠ [MA]

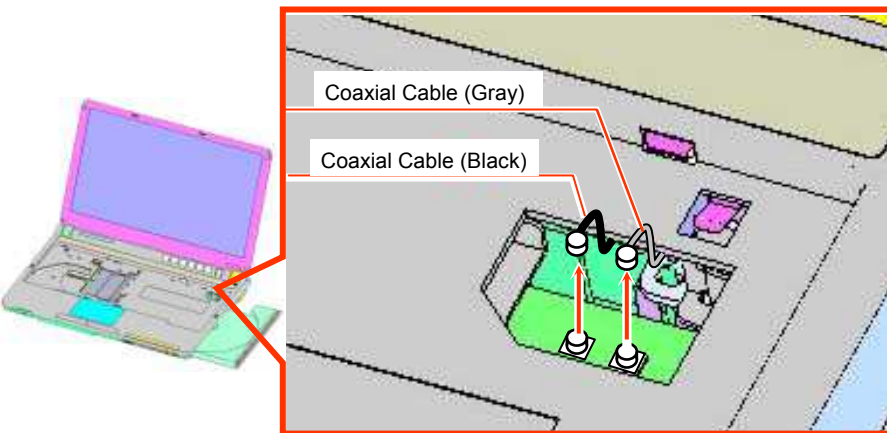
**WAN Model**



Disconnect the Coaxial Cable **vertically**.

3) ⚠ [MA]

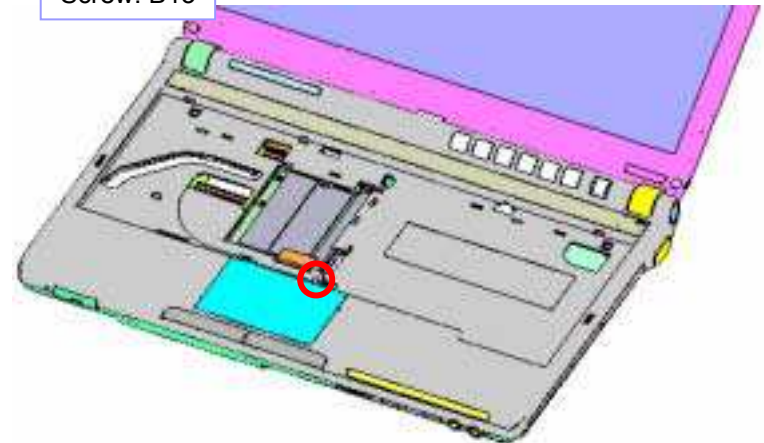
**TV Model**



Disconnect the coaxial cable (two places) **vertically**.

4)

Screw: B13



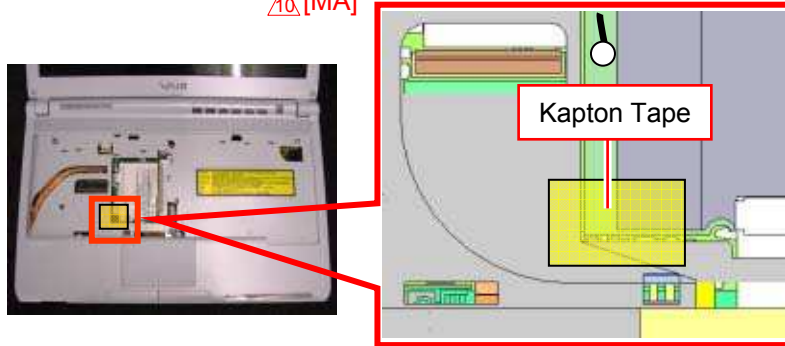
Remove the one screw.



## Palmrest-2

5) 8 [ADD] 2nd, 3rd(Except FP) Model

10 [MA]



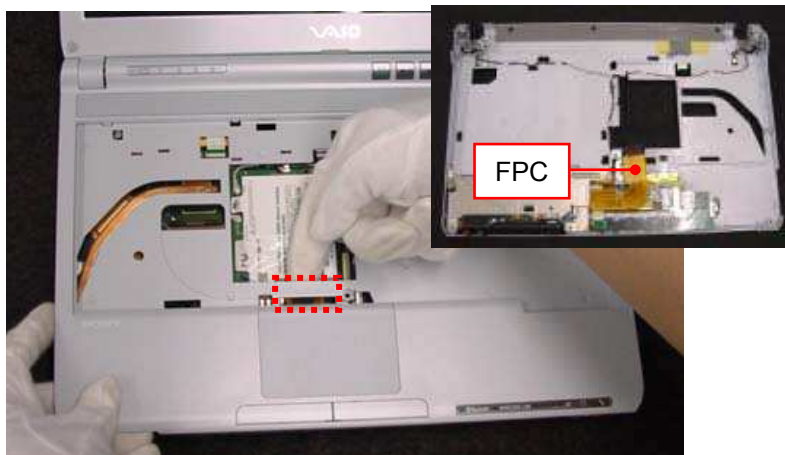
Peel off the Kapton Tape (one place).

6)



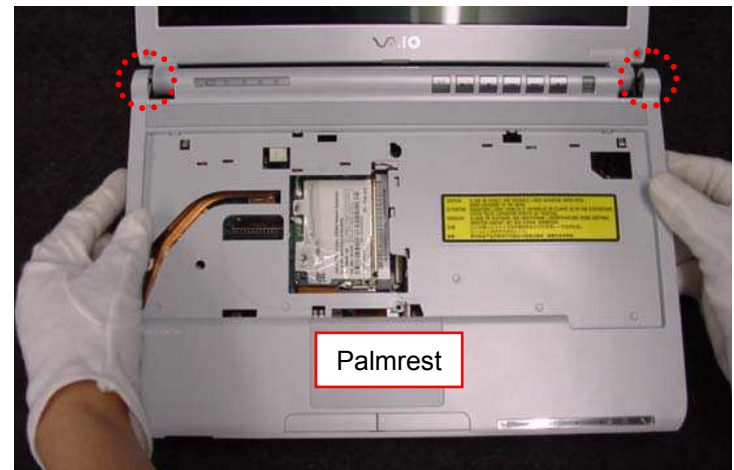
Disengage the detent (three places) at the front.

7)



Disconnect the FPC (one place) by raising it.

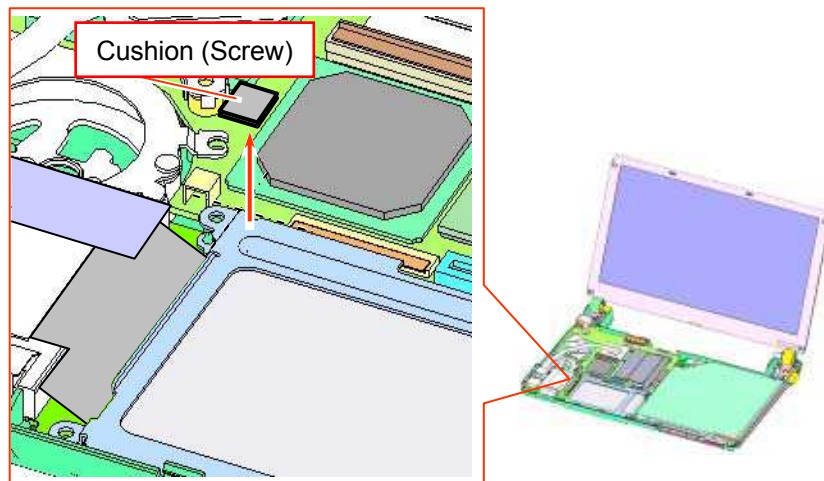
8)



Remove the Palmrest disengaging the detent (two places).

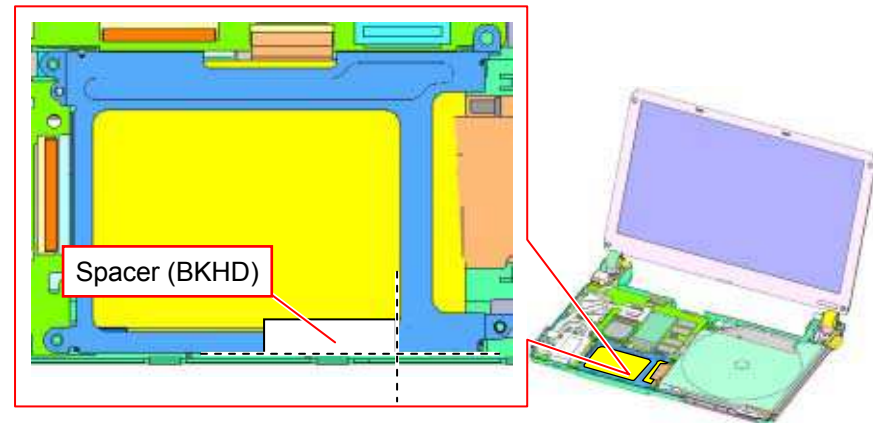
## HDD-1 ⚠️ [MA]

1)



Peel off the Cushion (Screw).

2) ⚠️ [MA]

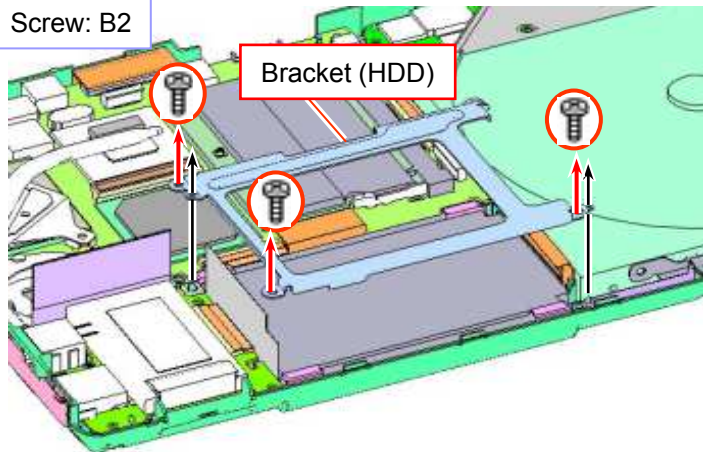
**4th Model**

Peel off the Spacer.

3)

Screw: B2

Bracket (HDD)

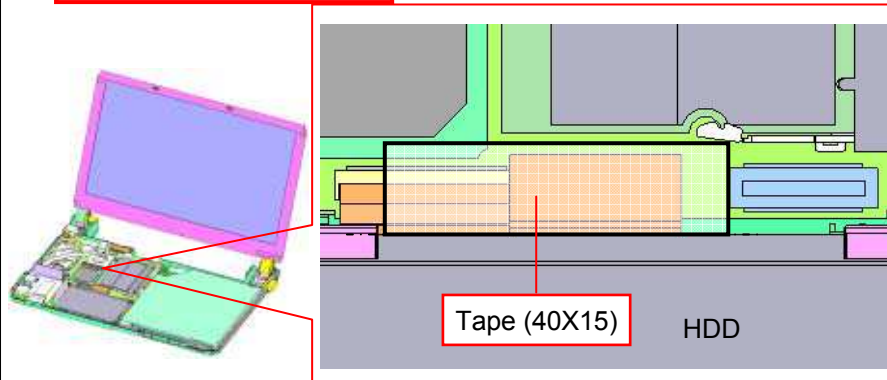


Remove the three screws, and then the Bracket.

4)


**1st, 2nd, 3rd Model**

⚠️ [MA]



Peel off the Tape.

## HDD-2

5) **To Type (A)**  [MA]

 [MA]



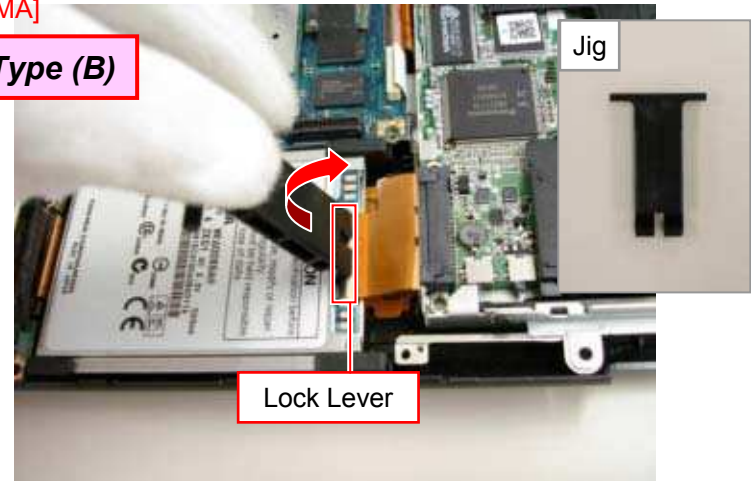
Remove the HDD.

\* Be careful not to bend the pins.

\* Be sure to hold the HDD on the sides for handling.

6)  [MA]

**To Type (B)**

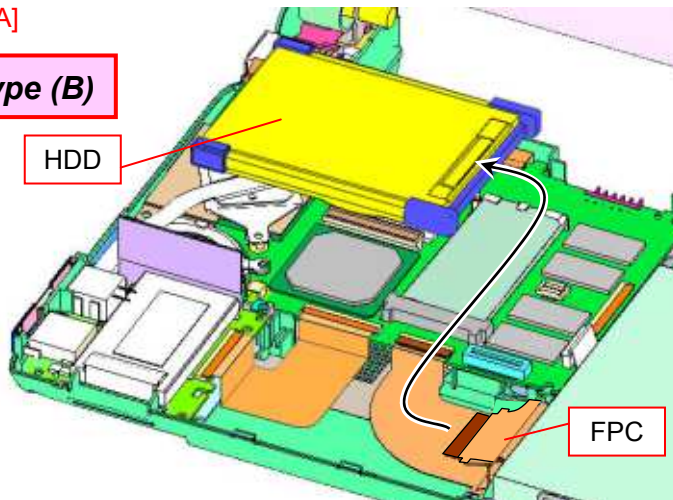


Raise the lock lever and release the lock.

\* Use the Jig.

7)  [MA]

**To Type (B)**

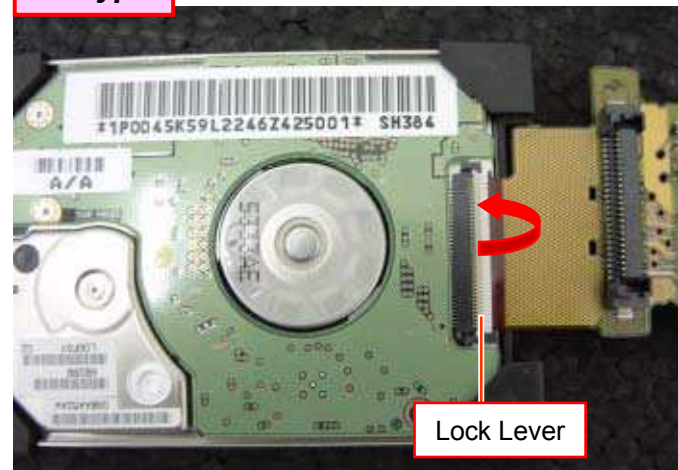


While removing the FPC from the connector, remove the HDD.

8)

 [MA]

**Hi Type**



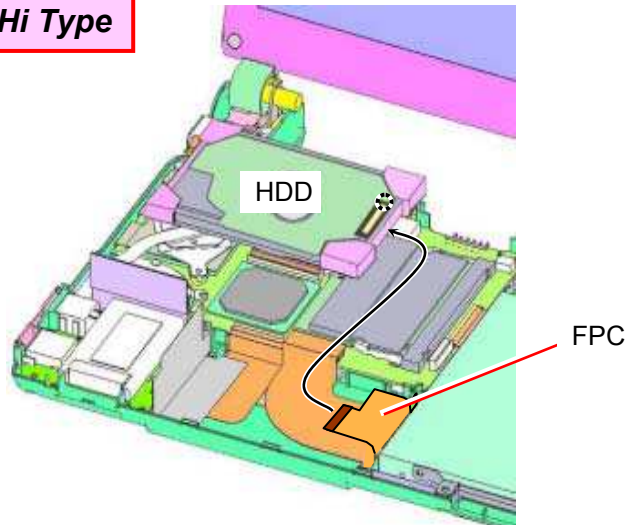
Raise the lock lever to release the lock.

TX Series



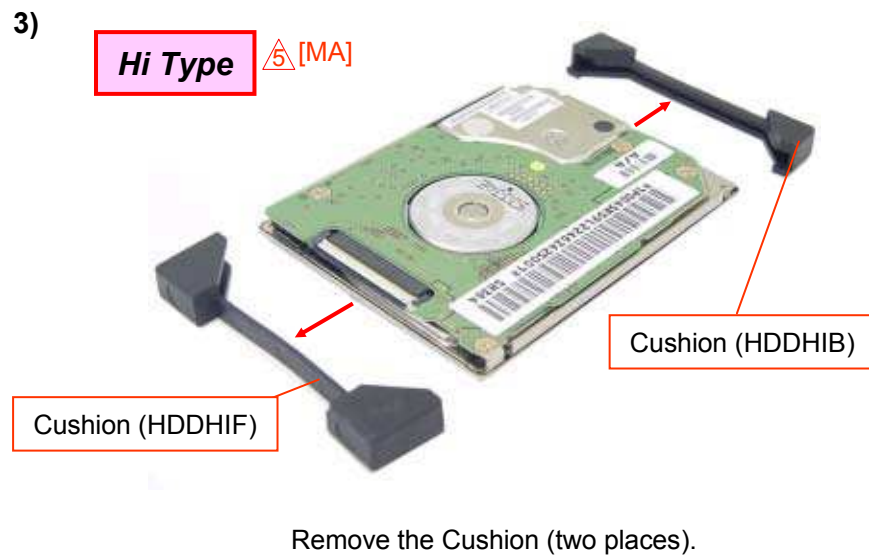
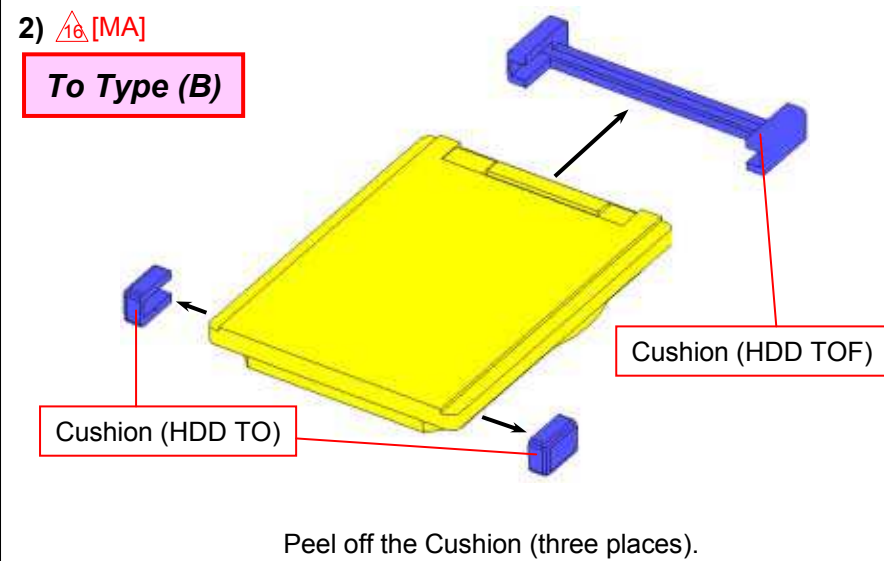
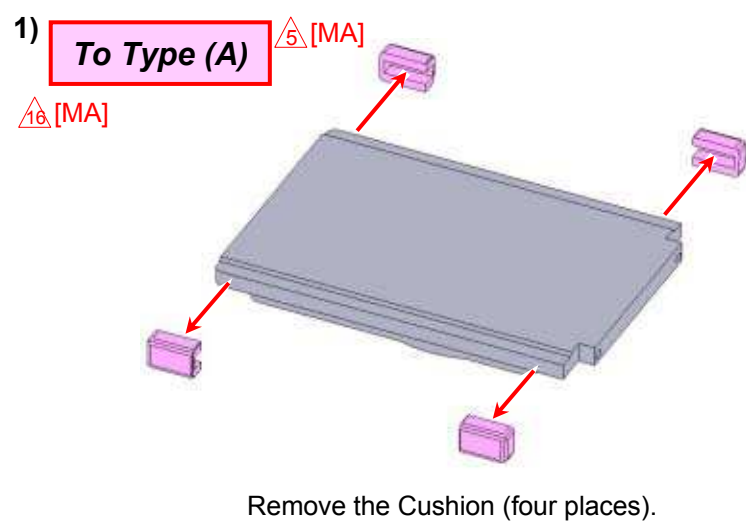
## HDD-3

### 9) ⚠️[MA] **Hi Type**



While removing the FPC from the connector, remove the HDD.

## Parts of the HDD



# Optical Disc Drive-1

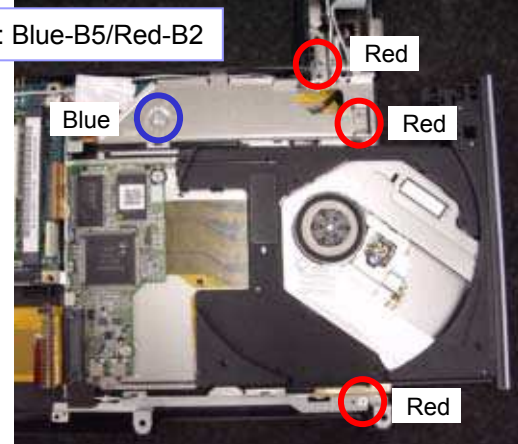
1)



Insert a thin tool into the hole of the Bezel, push it lightly and draw out the tray.

2)

Screw: Blue-B5/Red-B2

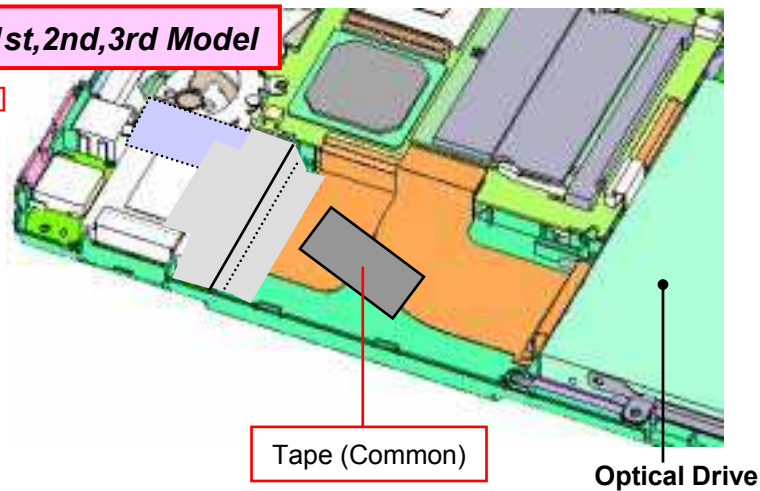


Remove the four screws.

3)

1st,2nd,3rd Model

△16 [MA]



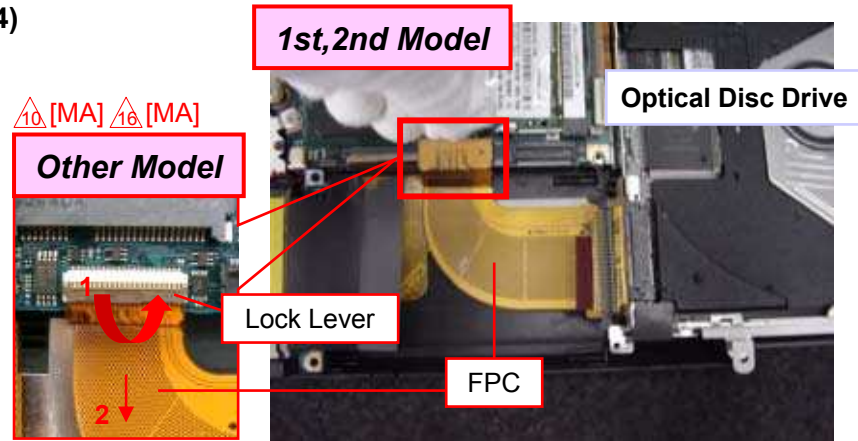
Peel off the Tape (one place).

4)

1st,2nd Model

△10 [MA] △16 [MA]

Other Model



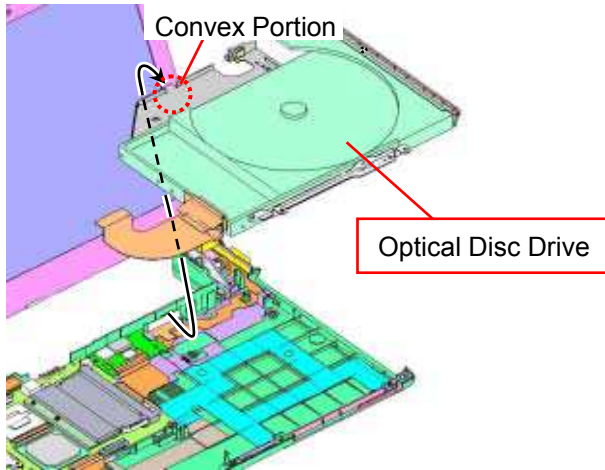
Disconnect the FPC (one place).

\*1st, 2nd Model --- Pull out it upward.

3rd Model --- Raise the lock lever to release the lock, and disconnect it in the direction of the arrow.

## Optical Disc Drive-2

5)



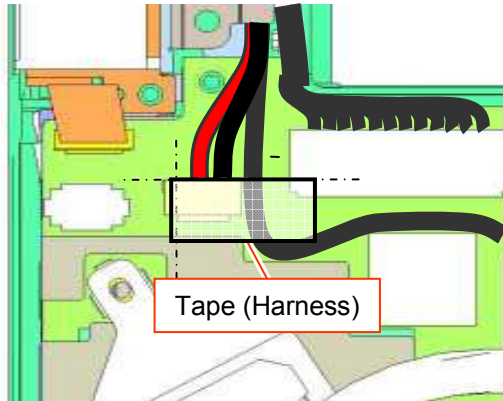
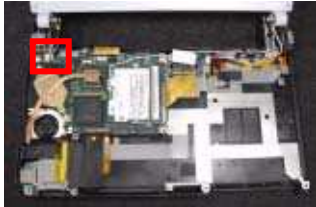
Raise the front side of the Optical Disc Drive, and remove it toward the front.

\* The convex portion is engaged.



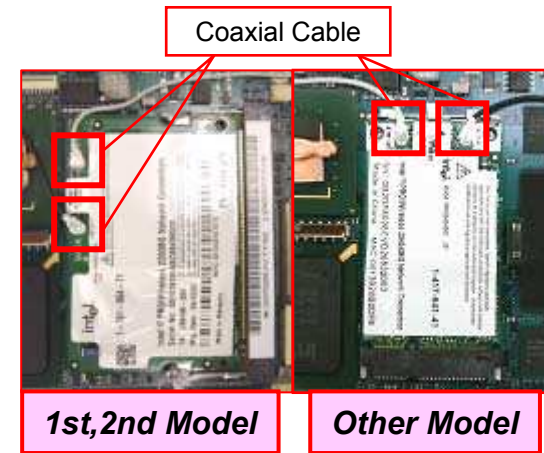
# LCD Section-1

1)



Peel off the Tape (Harness).

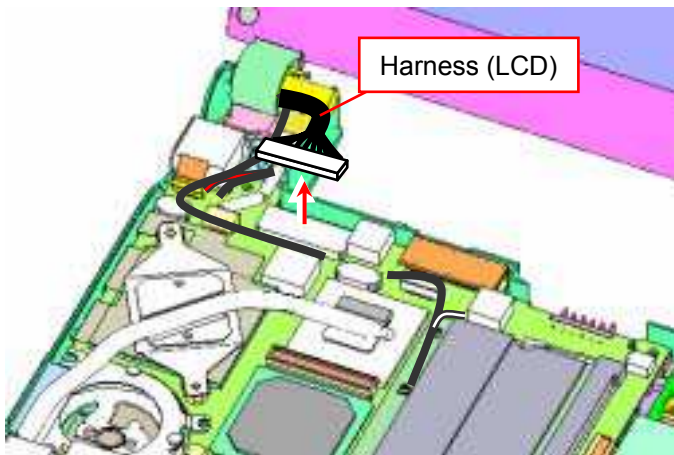
2)



⚠️ [MA] ⚠️ [MA]

Disconnect the connectors of the coaxial cables **directly above**.

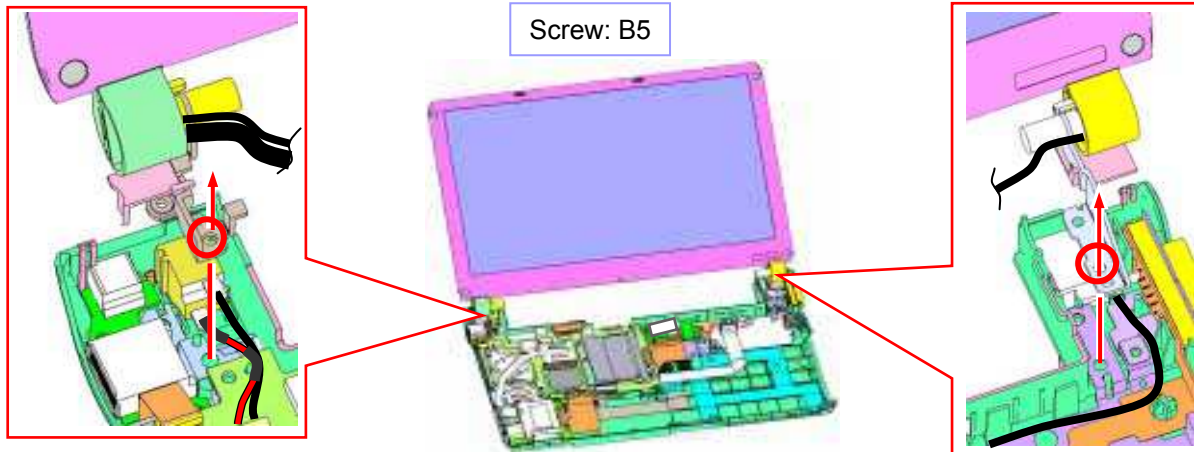
3)



Pull out the Harness (LCD) directly above and disconnect it.

## LCD Section-2

4)



Remove the two screws, and then the LCD Section.

\* Hold the LCD Section with your hand not to fall down.

\* Release the coaxial cables from the main unit beforehand.

# IFX-421 Board-1

1)

⚠ [MA]

Sheet (Fan)

1st, 2nd, 3rd Model

Insulator(MDCR)

IFX Board

Peel off the Sheet and Insulator from the IFX Board.

2)

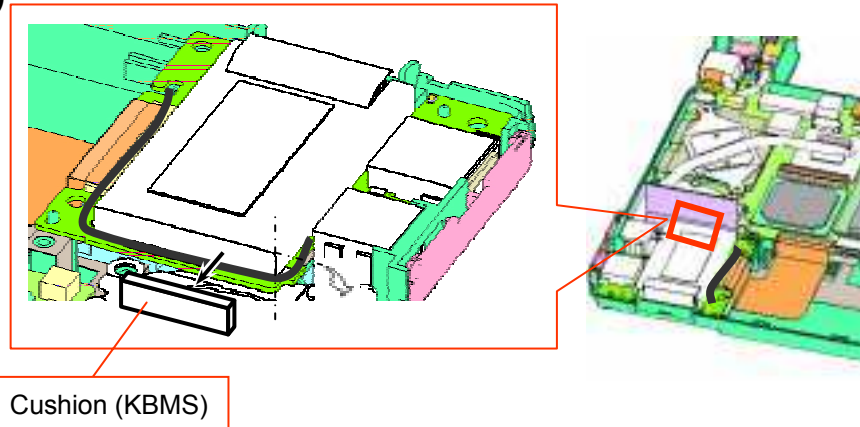
1st, 2nd, 3rd Model

⚠ [MA]

Insulator(MDCR)

Peel off the Insulator.

3)

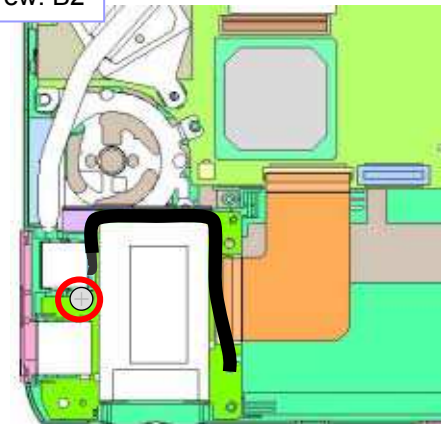


Cushion (KBMS)

Peel off the Cushion.

4)

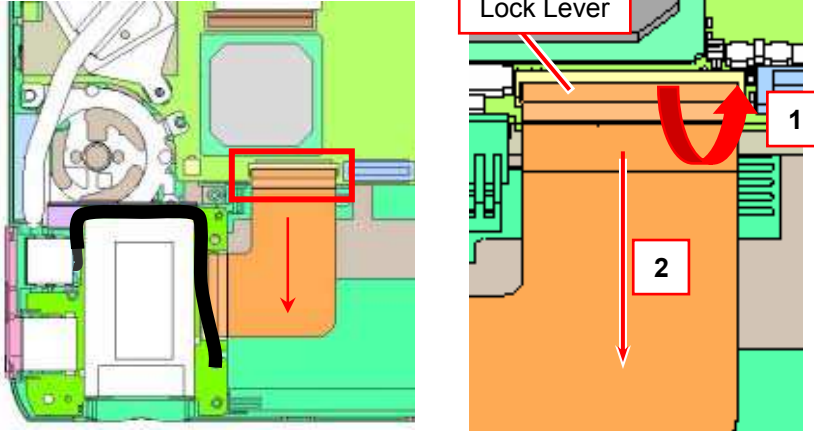
Screw: B2



Remove the one screw.

## IFX-421 Board-2

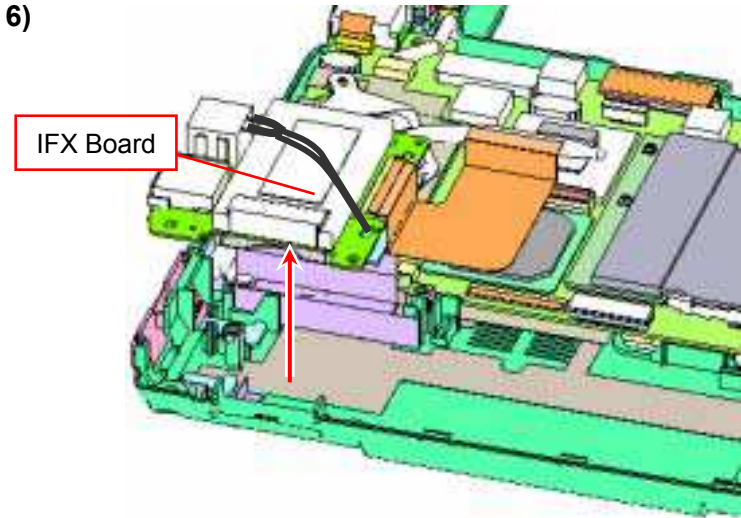
5)



Release the lock, and remove the FPC in the direction of the arrow.

\* Raise the lock lever, and the lock is released.

6)

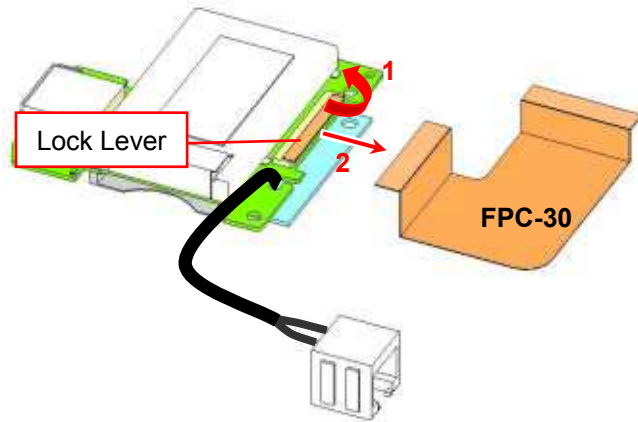


Remove the IFX Board.



## Parts of the IFX-421 Board

1)



Raise the lock lever to release the lock, and remove the FPC in the direction of the arrow.

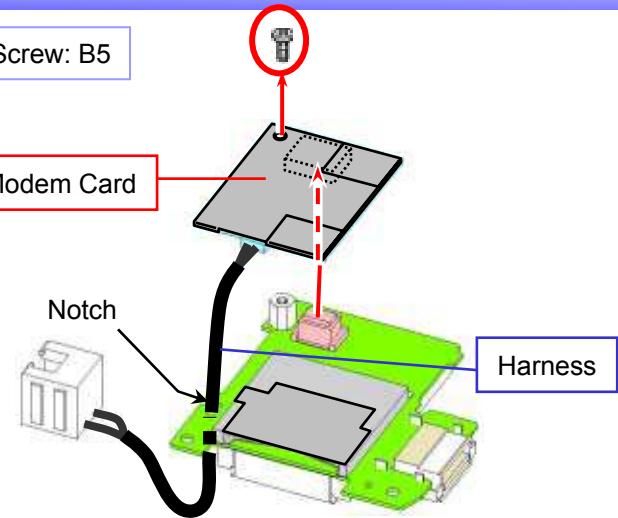
2)

Screw: B5

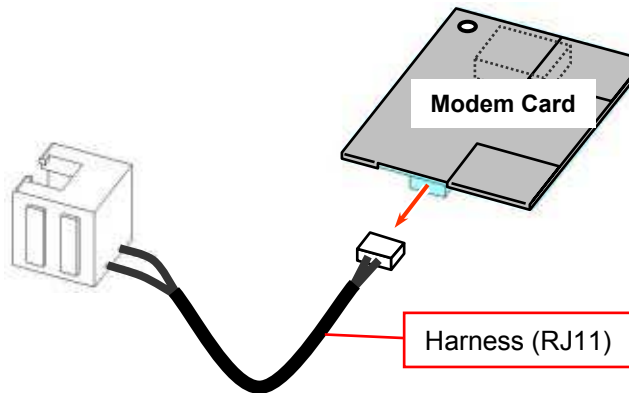
Modem Card

Notch

Harness



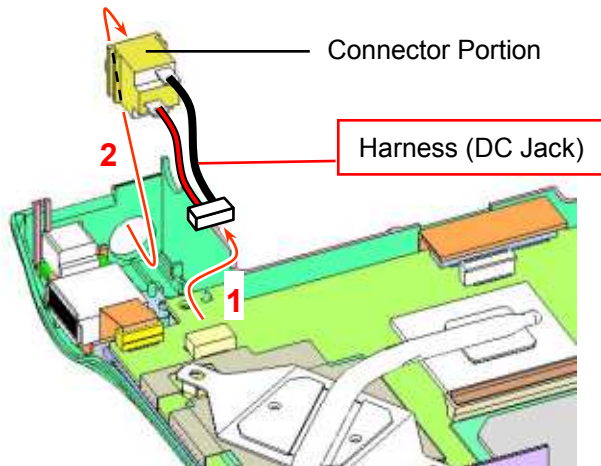
3)



Disconnect the Harness in the direction of the arrow.

## Harness (DC Jack)/CNX-338 Board

1)



Pull out the Harness in the direction of the arrow 1, and remove the Harness (DC Jack) toward the front.

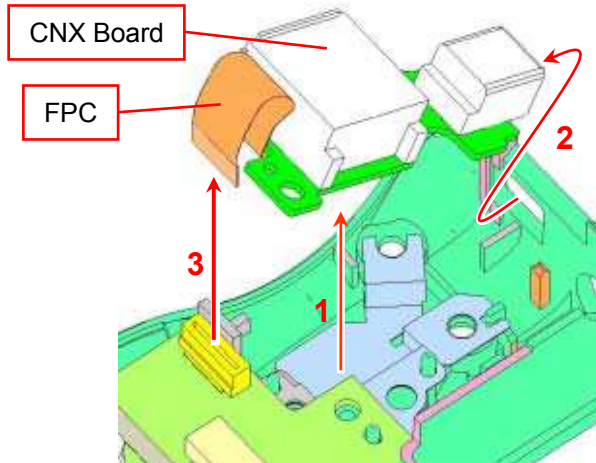
2)

Screw: B2





Remove the one screw.

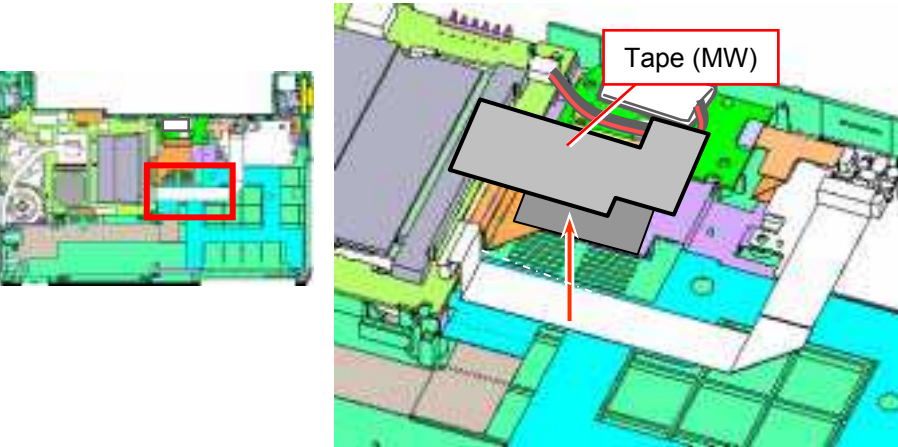
3)



Raise the front side of the CNX Board lightly (arrow 1), and take out it toward the front (arrow 2). Then pull out the FPC directly above and remove the CNX Board (arrow 3).

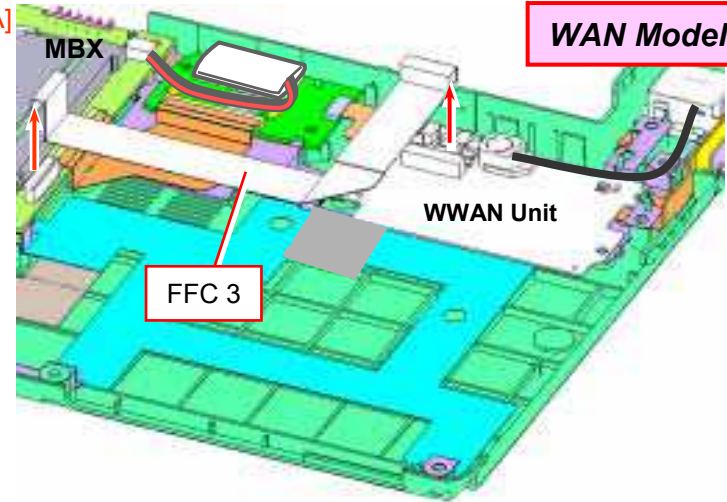
# Mother Board-1

1)  **WAN / TV Model** 



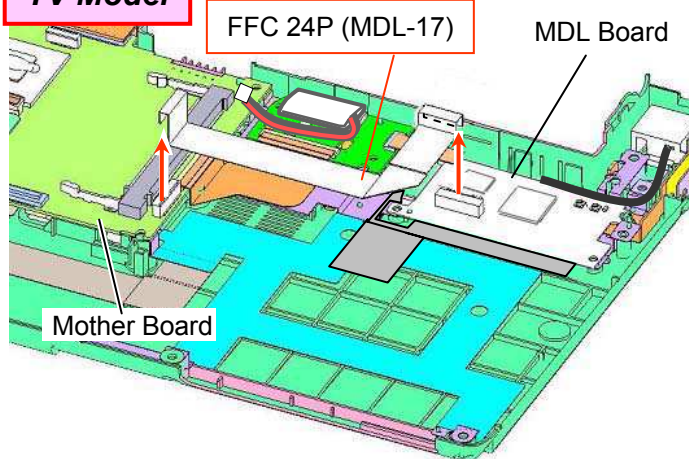
Peel off the Tape (one place).

2)  **WAN Model**

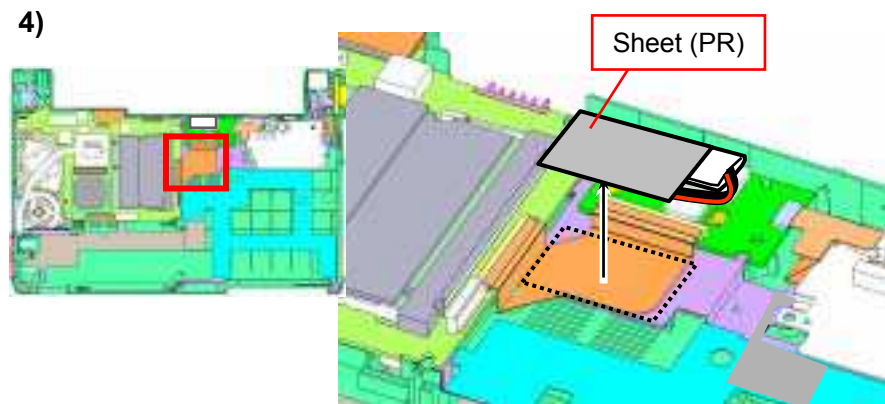


Pull out the FFC (two places).

3)  **TV Model**



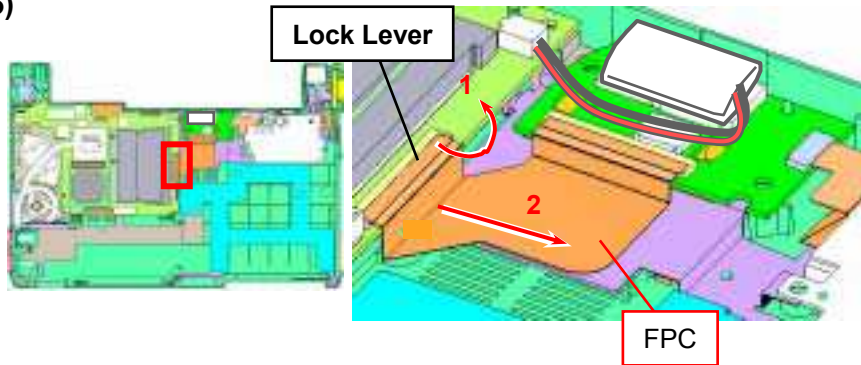
Disconnect the FFC (two places).



Peel off the Sheet (PR).

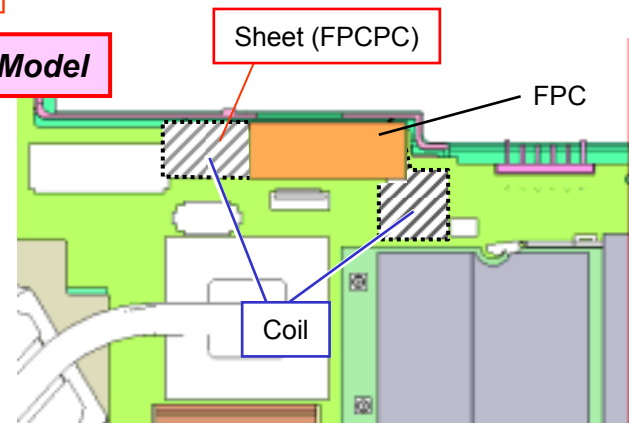
## Mother Board-2

5)



Raise the lock lever to release the lock, and remove the FPC.

6) ⚠️ [MA]

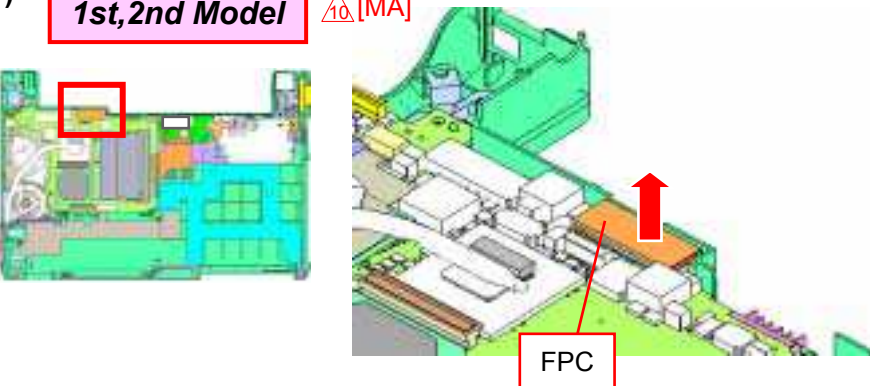
**2nd Model**

Peel off the Sheet from the coil (two places).

7)

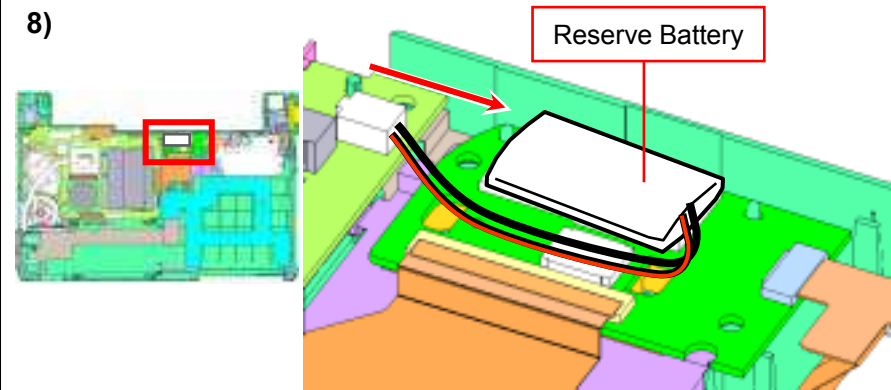
**1st, 2nd Model**

⚠️ [MA]



Disconnect the FPC directly above.

8)

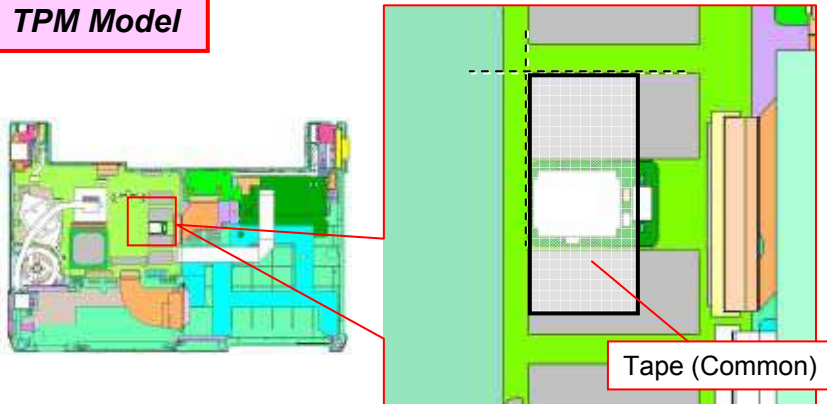


Disconnect the Harness (Reserve Battery) in the direction of the arrow, and remove the Reserve Battery.

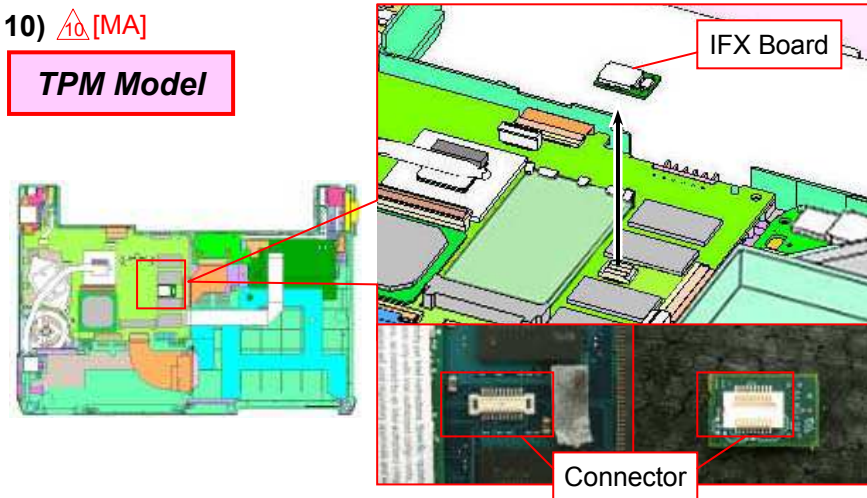
\* It is secured with adhesive tape.



## Mother Board-3


9)  [MA]**TPM Model**

Peel off the Tape (Common).

10)  [MA]**TPM Model**

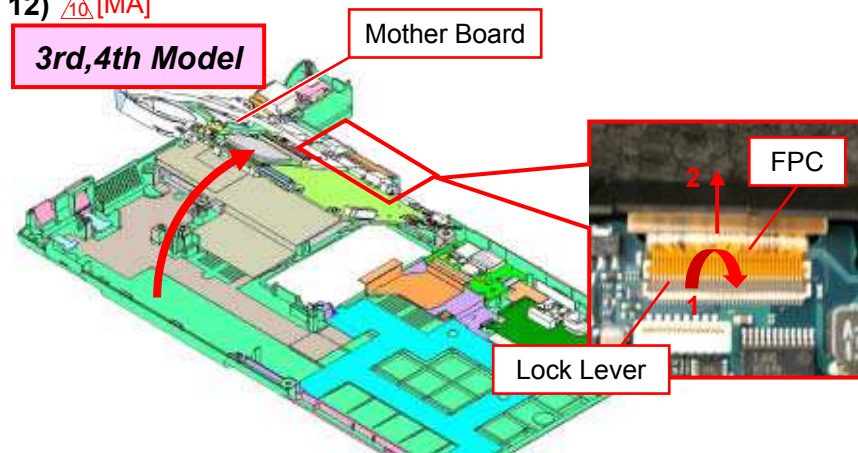
Remove the IFX Board.

11)

Screw : 1st,2nd model --- B2  
 [MA] 3rd,4th Model --- B4

 [MA]

Remove the three screws.

12)  [MA]**3rd,4th Model**

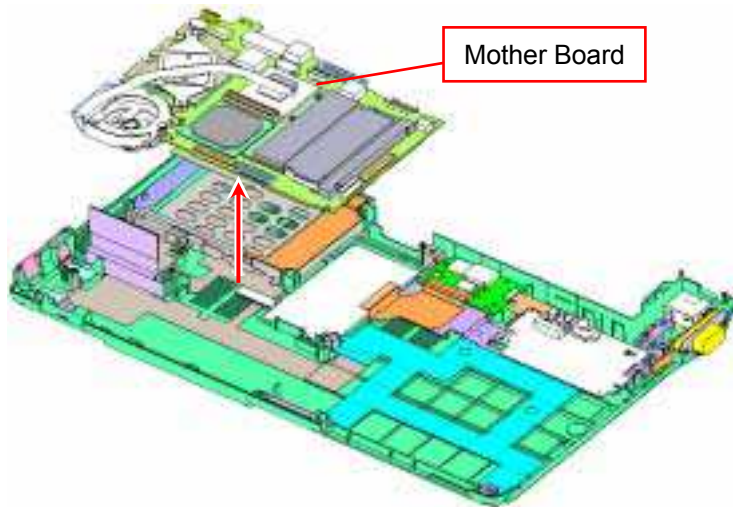
Raise the Mother Board from the front side, and disconnect the FPC (one place).

\*Raise the lock lever to release the lock, and disconnect it in the direction of the arrow.

TX Series

## Mother Board-4

13)

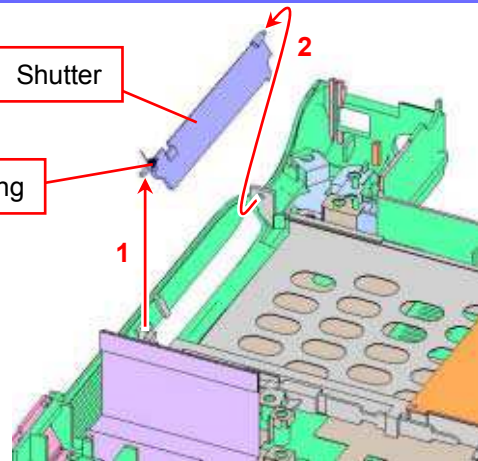


Mother Board

Remove the Mother Board.

# Shutter/PC Card Connector

1)

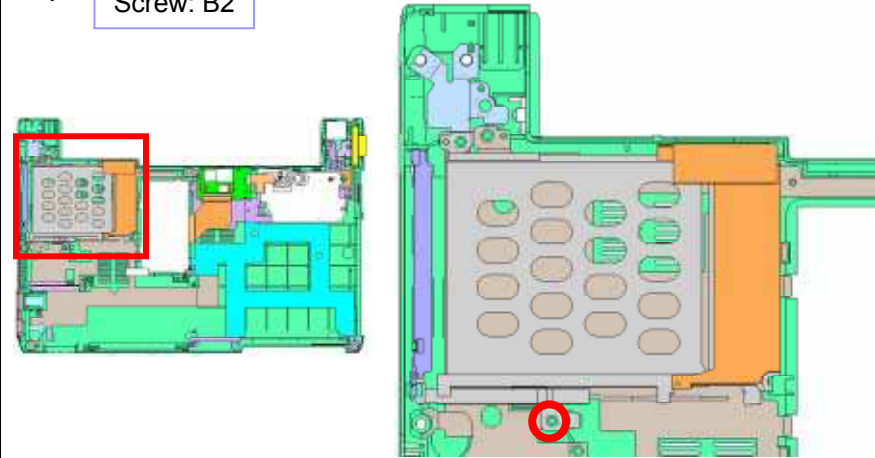


Remove the Shutter.

\* The Torsion Spring is removed together with the Shutter.

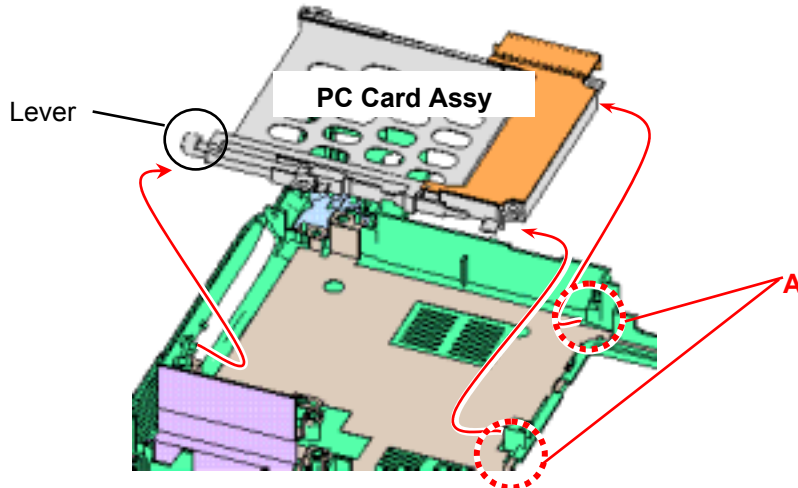
2)

Screw: B2



Remove the one screw.

3)

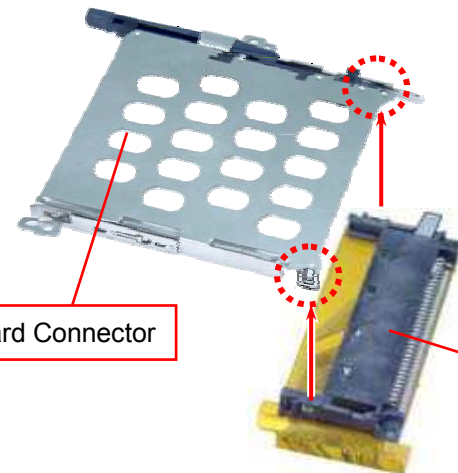


Lift up the PC Card Assy lightly and take out it from the A portion. Then take out the lever and remove the PC Card Assy.

4)

PC Card Connector

FPC-25



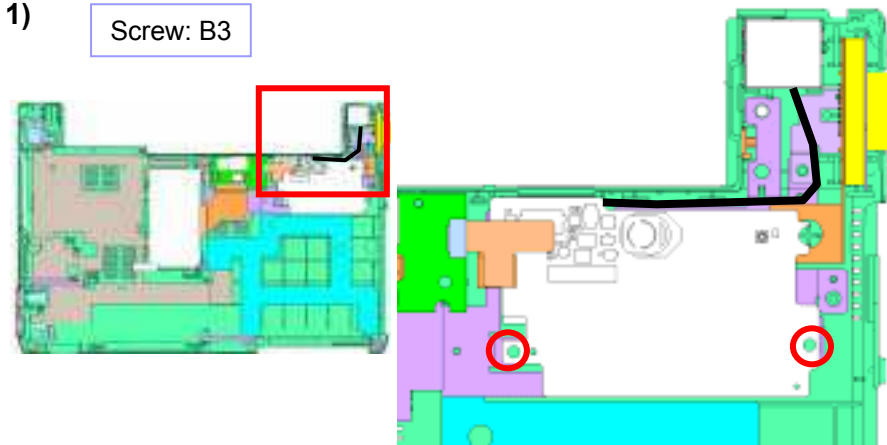
Disengage the detent (two places) and remove the PC Card Connector.

# WWAN Unit

## WAN Model

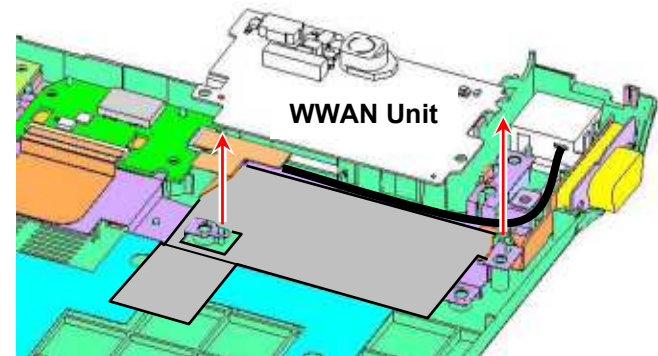
1)

Screw: B3



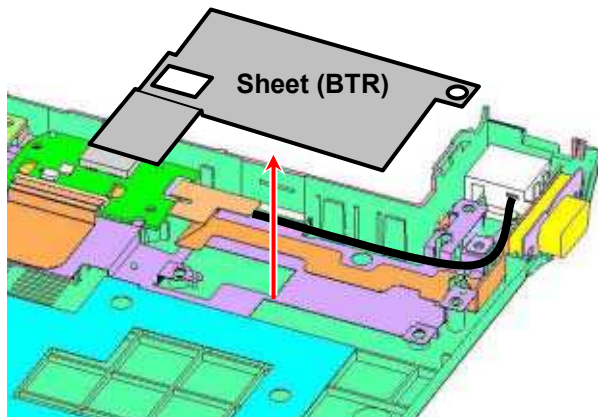
Remove the two screws.

2)



Remove the WWAN Unit.

3)



Peel off the Sheet.



# MDL-17 Board

**TV Model**

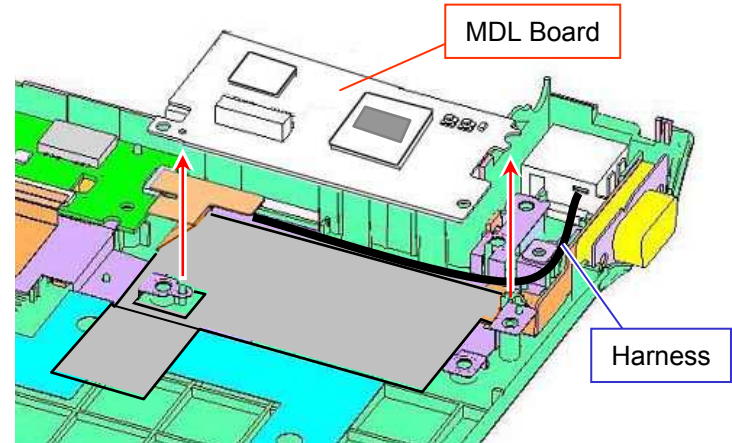
1)

Screw: B3



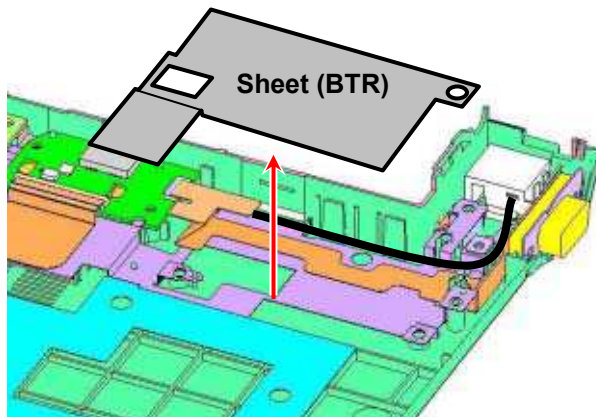
Remove the two screws.

2)



Remove the MDL Board.

3)

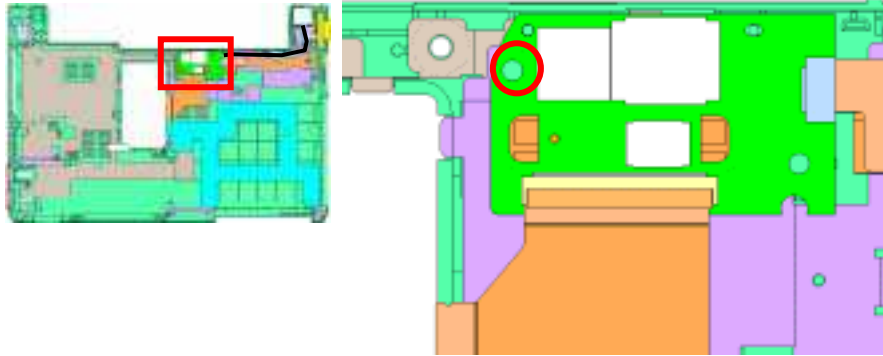


Remove the Sheet.

## CNX-316 Board

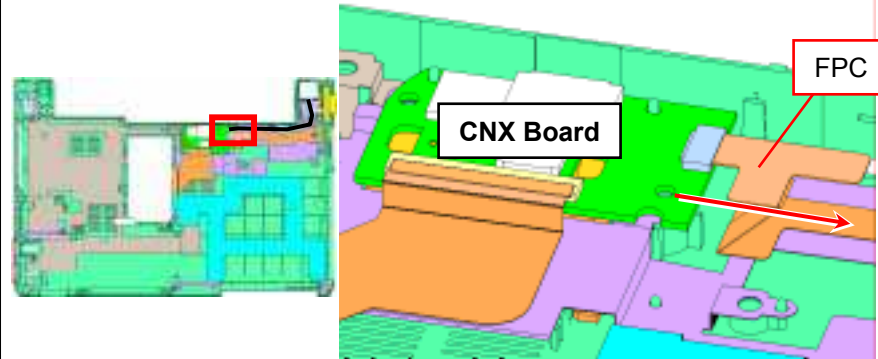
1)

Screw: B5



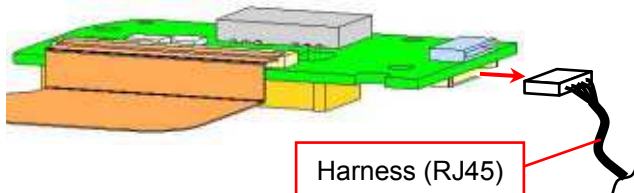
Remove the one screw.

2)



Disconnect the FPC in the direction of the arrow.

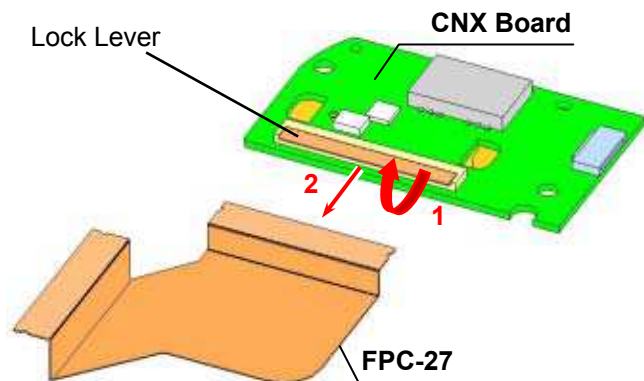
3)



Harness (RJ45)

Pull out the Harness (RJ-45) from the CNX Board and remove the CNX Board.

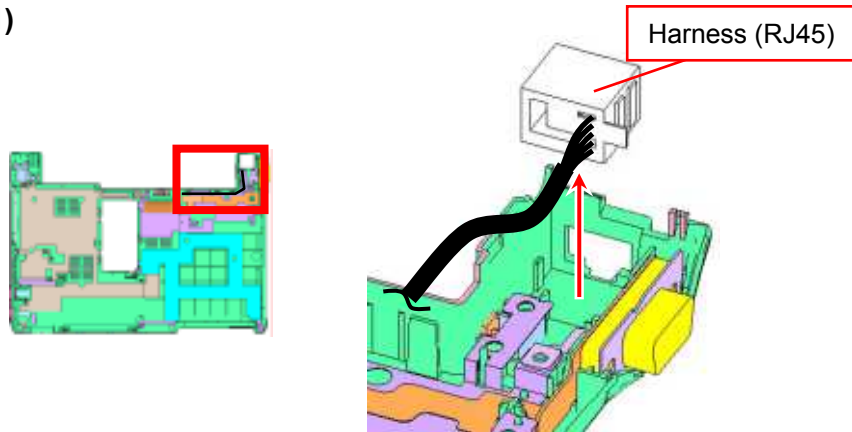
4)



Raise the lock lever to release the lock and disconnect the FPC.

# Harness (RJ 45)/FPC-28/Sheet (GPOP) -1

1)

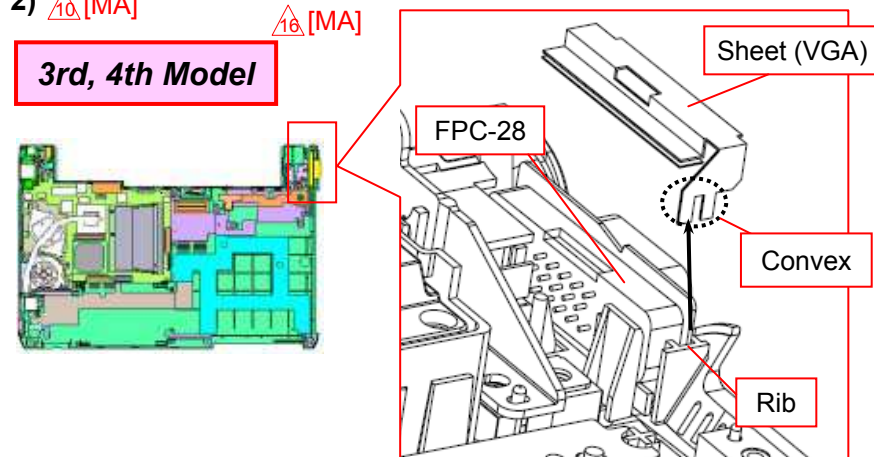


Raise the connector portion of the Harness (RJ45) and remove the Harness (RJ45).

2) ⚠️ [MA]

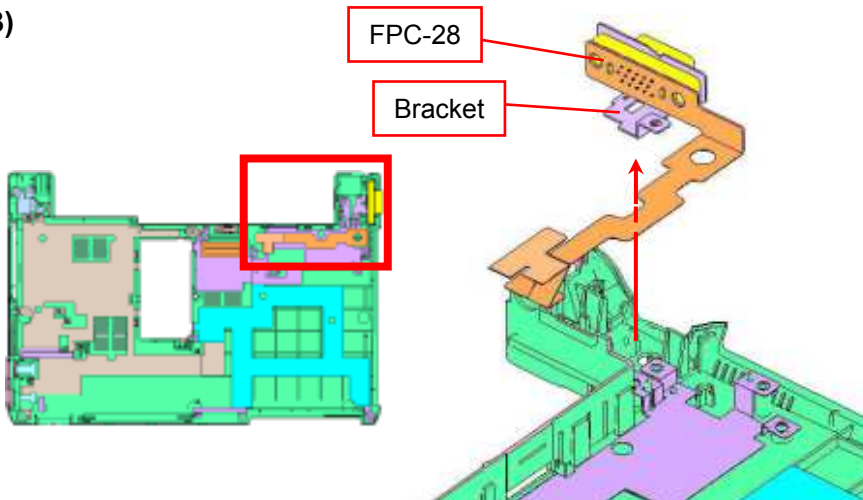
⚠️ [MA]

3rd, 4th Model



Peel off the Sheet (VGA), While removing the convex portion from between the FPC-28 and the rib.

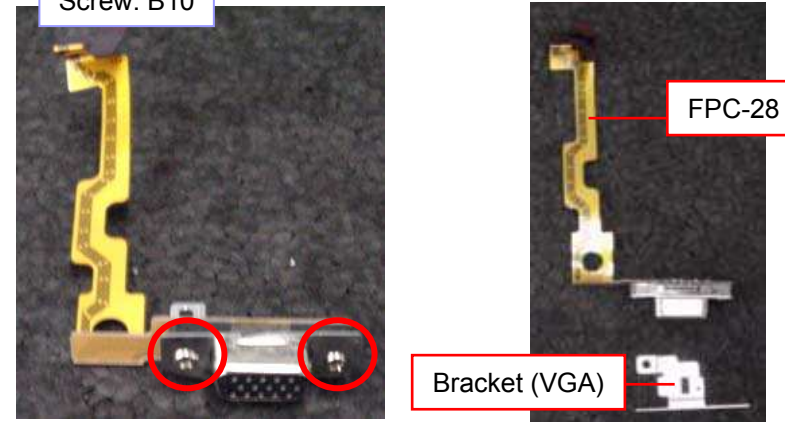
3)



Remove the FPC-28.

4)

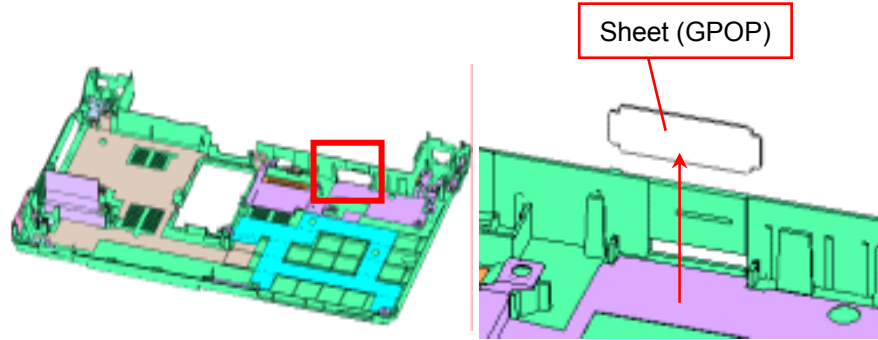
Screw: B10



Remove the two screws, and the Bracket.

## Harness (RJ 45)/FPC-28/Sheet (GPOP) -2

- 5) **Except WAN Model**  [MA]

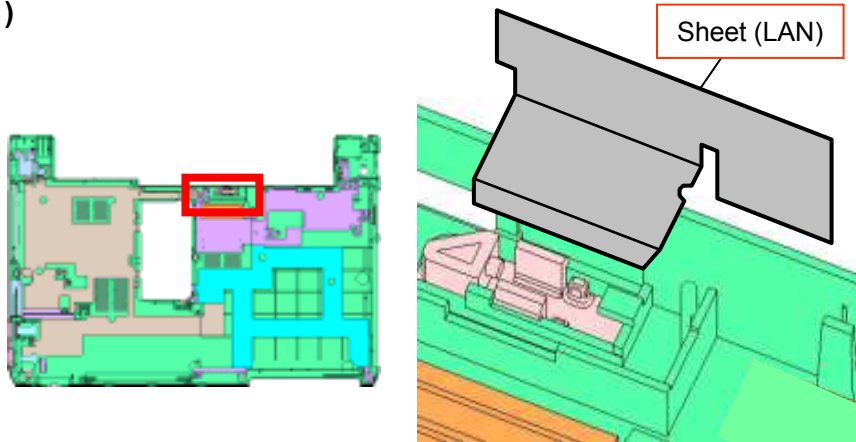


Remove the Sheet (GPOP).



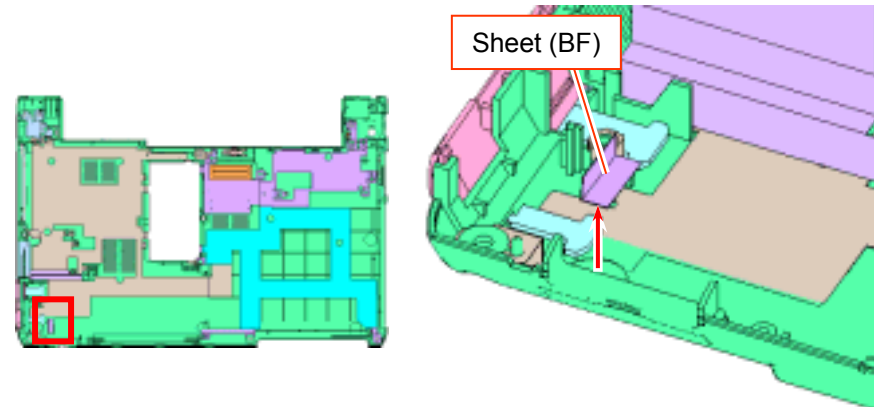
# Sheet

1)



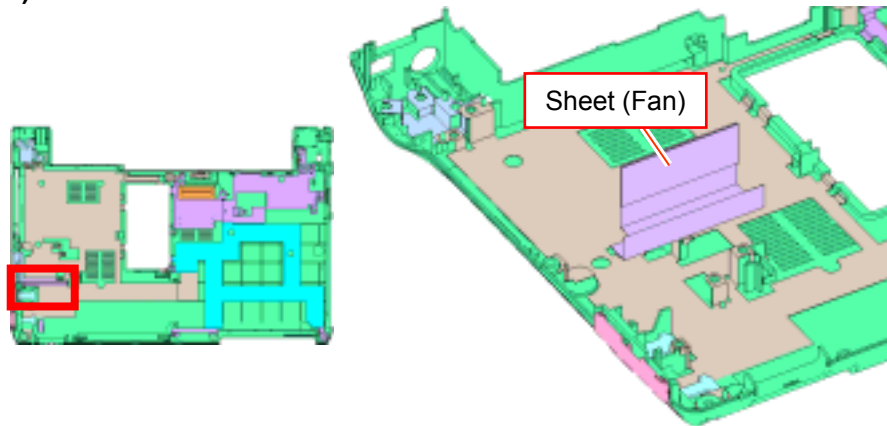
Remove the Sheet (LAN).

2)



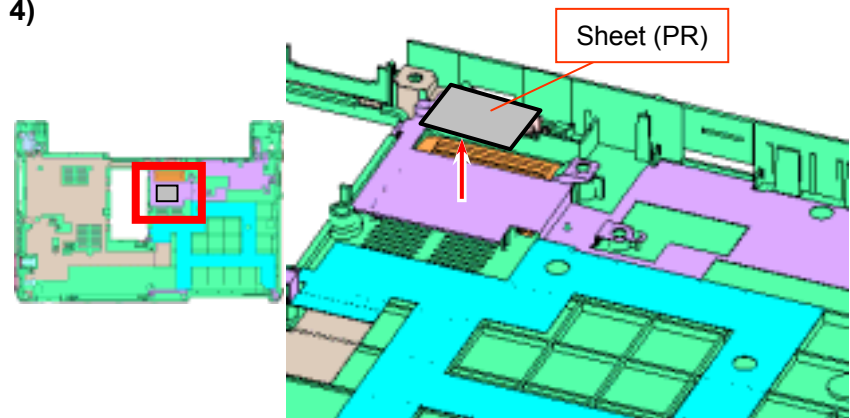
Peel off the Sheet (BF).

3)



Peel off the Sheet (Fan).

4)



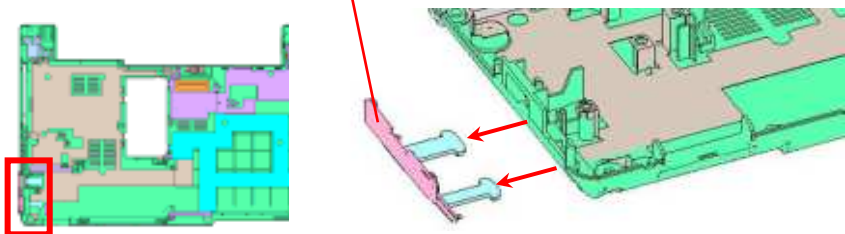
Peel off the Sheet (PR).

$\Delta_{10}$  [MA]

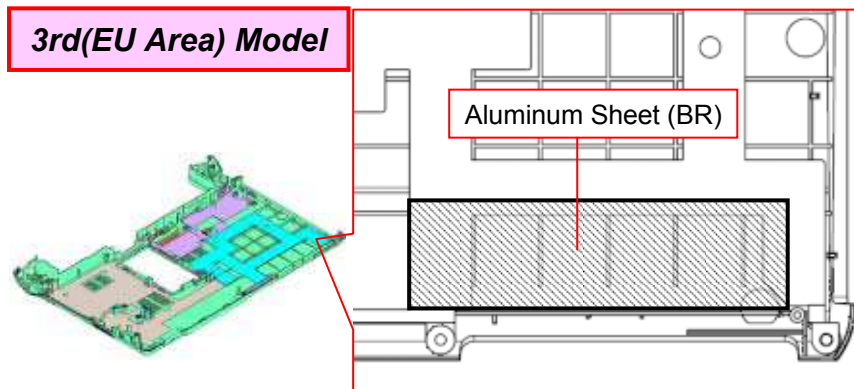
## Lid (L)/Shield Plate-1

1)

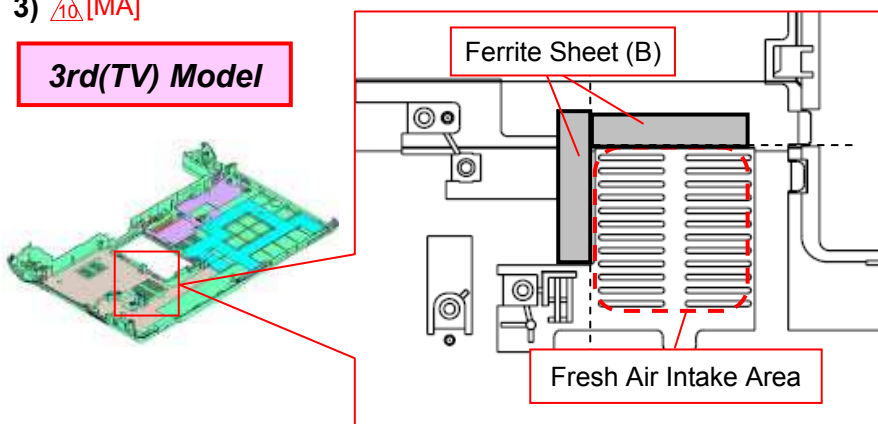
Lid (L)



Remove the Lid (L).

2)  $\Delta_{10}$  [MA]**3rd(EU Area) Model**

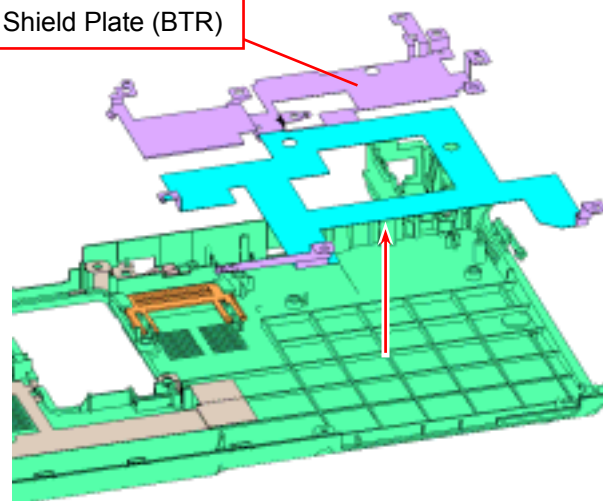
Peel off the Aluminum Sheet (BR).

3)  $\Delta_{10}$  [MA]**3rd(TV) Model**

Peel off the Ferrite Sheet (two places).

4)

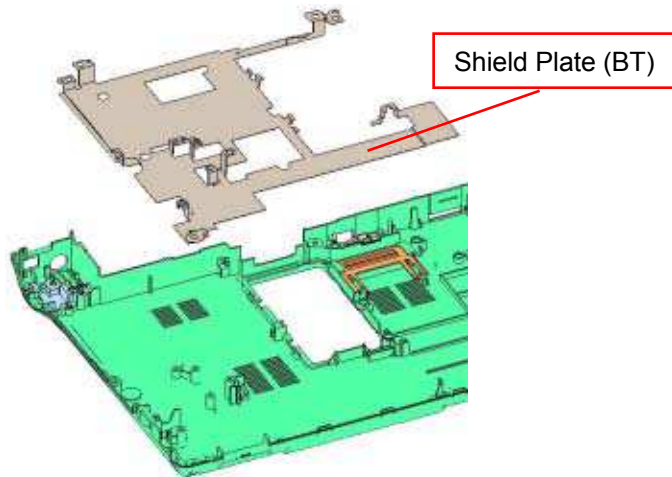
Shield Plate (BTR)



Remove the Shield Plate.

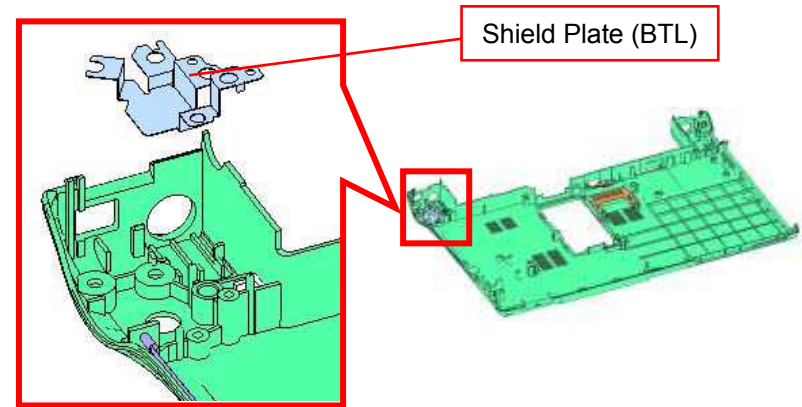
## Lid (L)/Shield Plate -2

5)



Remove the Shield Plate.






6)



Remove the Shield Plate.

# Update History

[**ADD**]---Addition    [**DEL**]---Deletion    [**CHG**]---Change    [**COR**]---Correction    [**MA**]---Model Addition

Date		Contents	Version No.
2005.10.13		[MA] ( Page 4, 16, 18(a), 20 )	1.20
2005.12.28		[MA] ( Page 4, 6, 6(a), 7, 16, 17, 17(a), 18(b) )	2.00
2006.03.10		[ADD] Attachment (Page 3, 3(a), 5)	2.30
2006.06.16		[MA] (Page 3, 5, 8, 10, 17, 17(a), 17(b), 20, 20(a), 22, 23)	3.00
2006.10.10		[MA] (Page 3, 6, 6(a), 6(b), 7, 8, 10, 12, 17(a), 20)	4.10