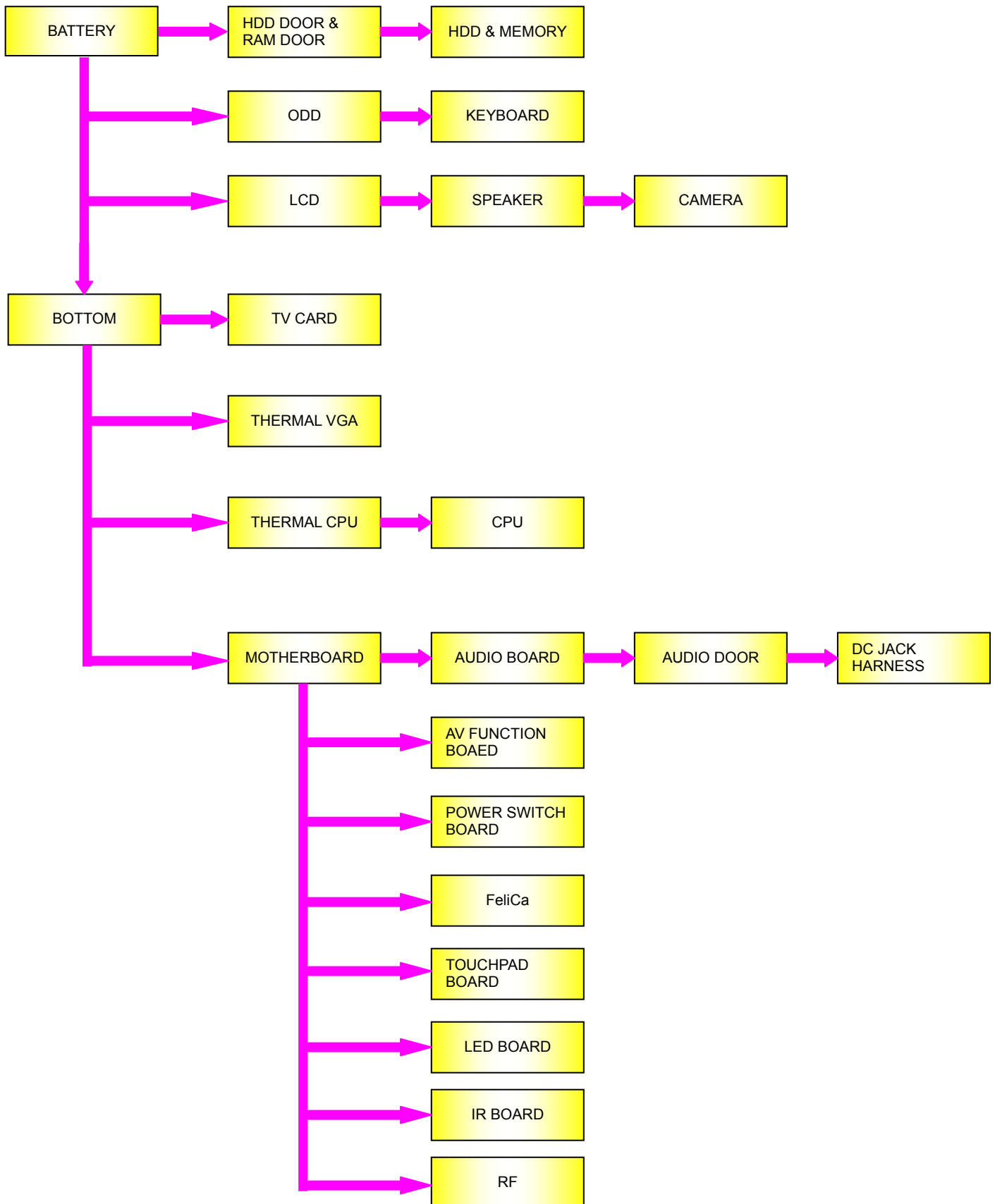


Table of contents

| Section | Title | Page |
|----------|---------------------------------------|------|
| 1 | Disassembly Procedures Outline | |
| | Screw for disassembly | 2 |
| 2 | Disassembly Flow Chart | 3 |
| 3 | Disassembly components | |
| | Battery | 4 |
| | HDD door | 4 |
| | RAM door | 4 |
| | Memory | 5 |
| | HDD | 5 |
| | ODD | 6 |
| | Keyboard | 6 |
| | LCD | 7 |
| | Speaker | 10 |
| | Camera | 11 |
| | Bottom | 12 |
| | TV Card | 13 |
| | AUDIO Board | 14 |
| | Thermal VGA | 15 |
| | Thermal CPU | 16 |
| | CPU | 16 |
| | Motherboard | 19 |
| | Function Board | 20 |
| | Function Board | 21 |
| | DC Jack Harness | 22 |

Screw needed for Disassembly

| SIZE | QTY | POSITION | Pictures |
|---------|-----|------------------|---|
| M2*L8 | 3 | ODD |  |
| M2*L8 | 6 | Speaker |  |
| M3*L6 | 6 | HINGE |  |
| M2*L3 | 4 | KEYBOARD |  |
| M2*L3 | 2 | BLUETOOTH MODULE | |
| M2*L5 | 2 | BOTTOM |  |
| M2*L8 | 11 | BOTTOM |  |
| M2*L3 | 8 | LCD BRACKET | |
| M2*L3 | 1 | INVERTER | |
| M2*L5 | 10 | LCD PANEL | |
| M2*L3 | 2 | CAMERA | |
| M2*L5 | 1 | MOTHER BOARD | |
| M2*L3 | 2 | TOUCH PAD | |
| M2*L2 | 4 | ODD BRACKET |  |
| M3*L3 | 8 | HDD BRACKET |  |
| M2*L5 | 6 | CPU | |
| M2*L1.6 | 3 | KB COVER |  |
| M2*L3 | 1 | BLUETOOTH HOLDER | |
| M2*L3 | 2 | FUNCTION BOARD | |
| M2*L3 | 2 | LED BOARD | |
| M2*L3 | 1 | AUDIO BOARD | |
| M2*L3 | 1 | IR BOARD | |



1. Battery
2. HDD Door
3. RAM Door



Step 1. To prevent any kind of cosmetic damages and scratches; place your PC upside on top of a soft surface. Sliding the latch and remove the battery in the direction of the arrow.



Step 2. Use a screwdriver to remove the marked screw, remove the HDD Door as the arrow shown.



Step 3. Use a screwdriver to remove the marked screw. Remove the RAM Door as the arrow shown.

1. Memory
2. HDD



Step 4. Gently pull apart tabs and remove the two memories.



Step 5. Use a screwdriver to remove the marked six screws.



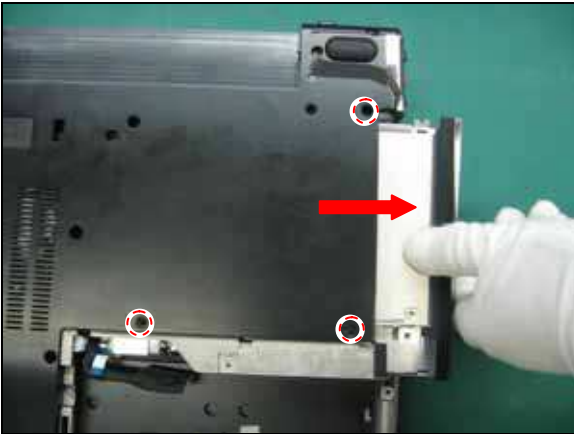
Step 6. Gently pull out the marked cable from B-CAS Card board and remove the B-CAS Card board.



Step 7. Gently pull out the marked cable. Remove the HDD.



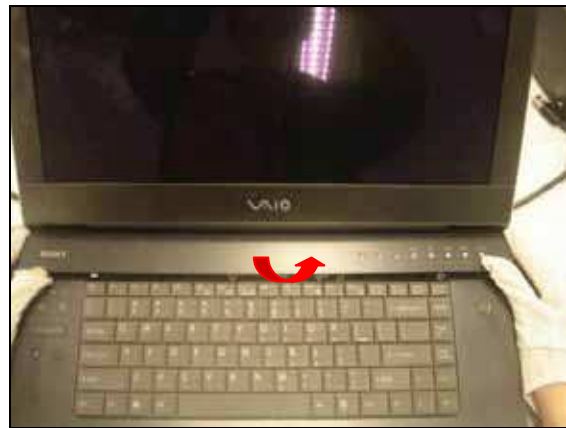
1. ODD
2. Keyboard



Step 8. Use a screwdriver to remove the three screws. Remove the ODD as the arrow shown.



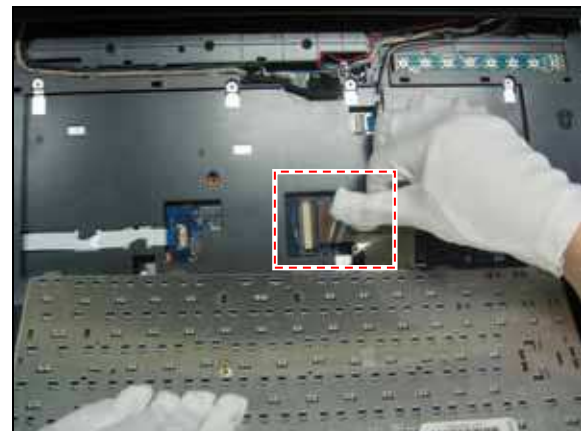
Step 9. Use a screwdriver to remove the marked four screws.

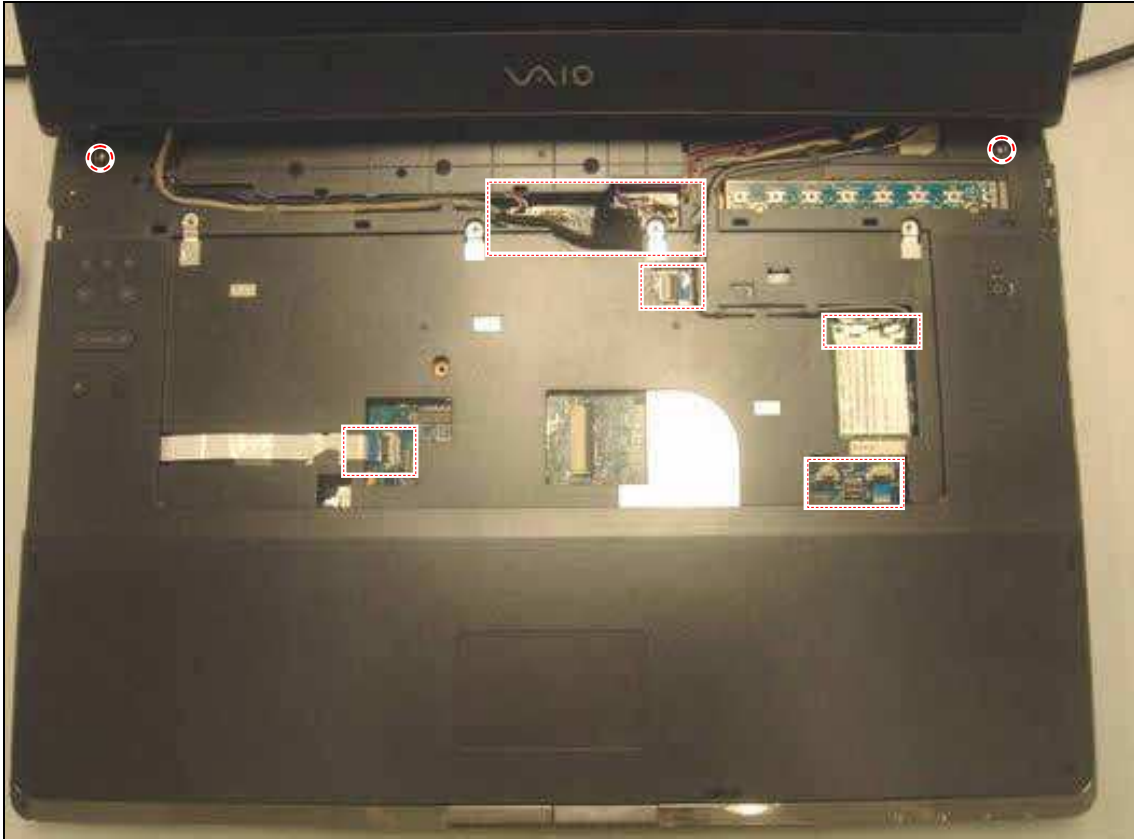


Step 10. Remove the K/B cover as the arrow shown.

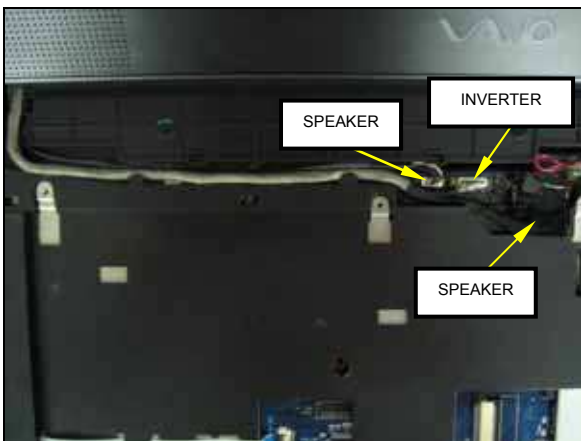


Step 11. Use a screwdriver to remove the marked four screws and pull out the marked cable.





Step 12. Use a screwdriver to remove the two top screws, then pull out the cables as shown.

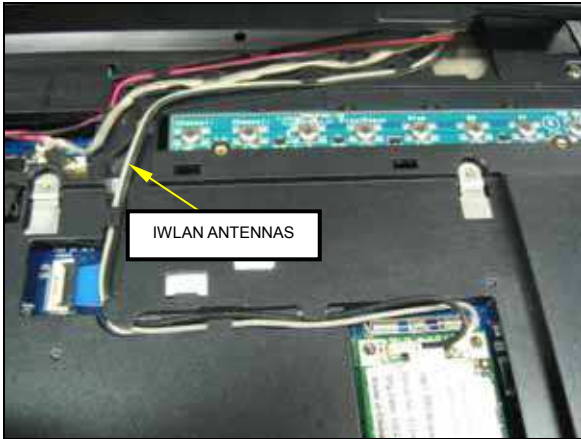


Step 13. Remove the LCD harness, Inverter and Speaker cable.

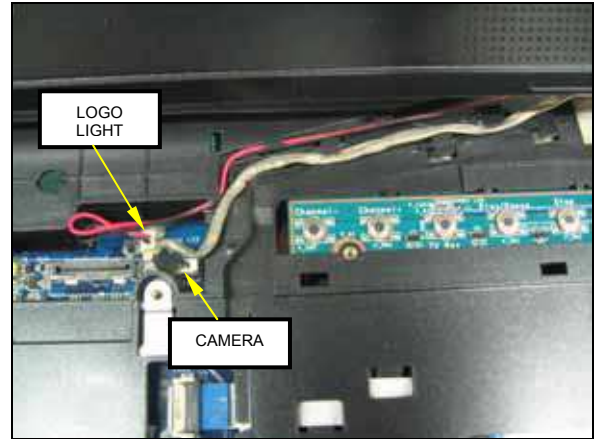
Note the routing of the cables.



Step 14. Pull out the WLAN ANTENNAS as shown.



Step 15.Remove the WLAN ANTENNAS.



Step 16.Remove the LOGO light cable and the CAMERA harness.

Note the routing of the cables.



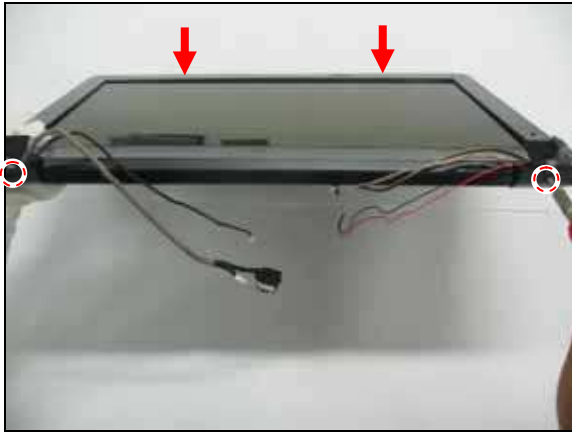
Step 17.Close the LCD, turn the reverse side of the notebook upward and Use a screwdriver to remove the marked screw. Then remove the two screws of the Hinge Cover.



Step 18. Gently pull out the LCD.



Step 19. Pull out the marked four rubber foot and use a screwdriver to remove the two screws.



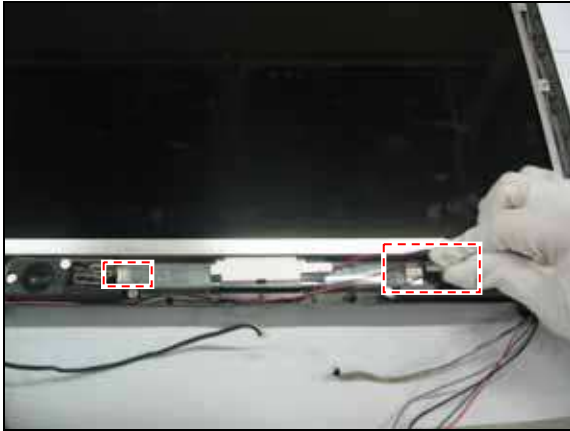
Step 20. Use a screwdriver to remove the marked four screws.



Step 21. Remove the LCD bezel as shown.



Step 22. Gently remove the LCD bezel.



Step 23. Pull out the marked inverter cable.



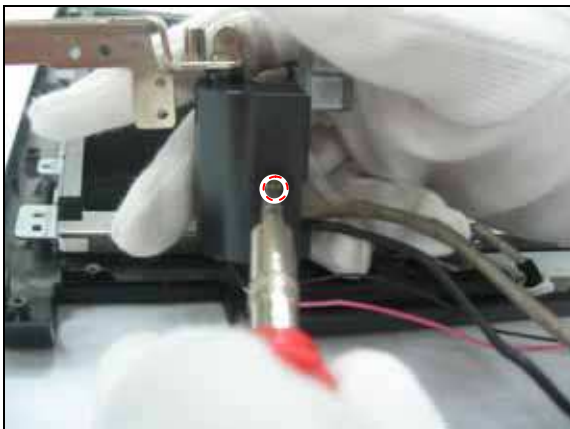
Step 24. Use a screwdriver to remove the marked screw.



Step 25. Use a screwdriver to remove the marked eight screws.



Step 26. Remove the hinge as shown.



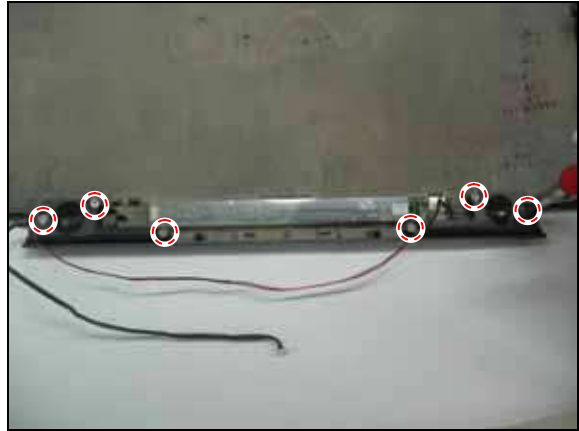
Step 27. Use a screwdriver to remove the marked.



1. LCD
2. Speaker
3. Camera



Step 28. Gently remove the LCD and set aside.



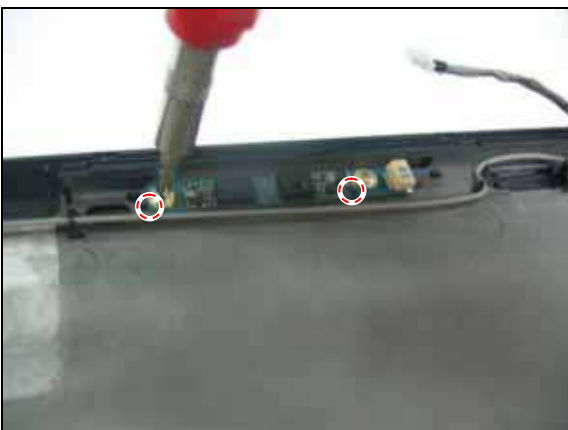
Step 29. Use a screwdriver to remove the marked six screws.



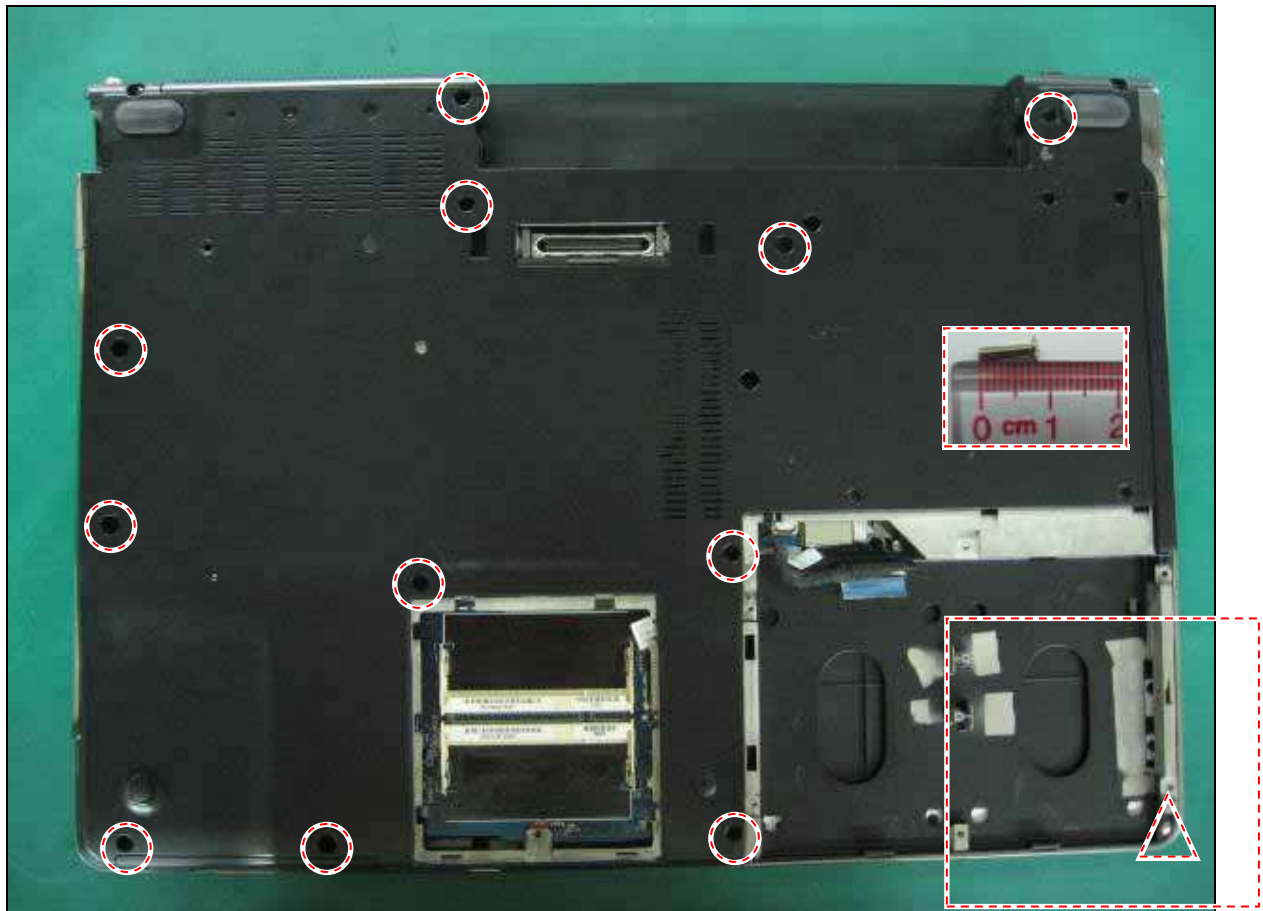
Step 30. Gently remove the Speakers.



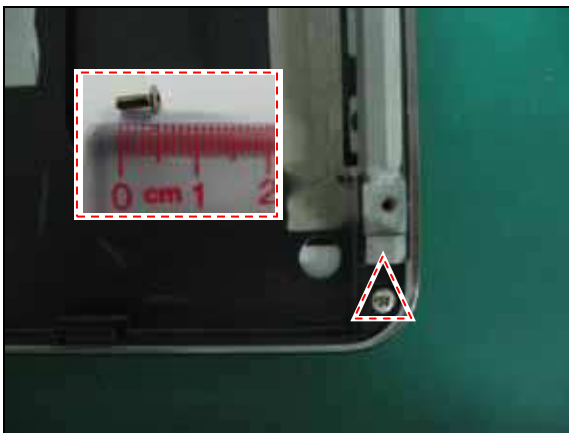
Step 31. Remove the marked cable.



Step 32. Use a screwdriver to remove the marked two screws.



Step 33. Remove twelve screws from the Bottom Housing.



Note: This screw underneath the HDD door is significantly shorter than the other screws securing the Bottom Housing.



Step 34. Remove the Bottom Housing.

1. TV card



Step 35. Remove the marked two cables. Use a screwdriver to remove the marked two screws.



Step 36. There are three types of TV card as follows.



Step 36-1. This is TV card for JP.



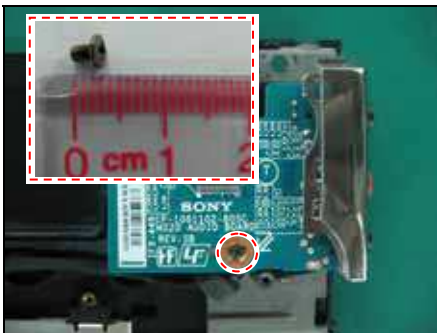
Step 36-2. This is TV card for EU.



Step 36-2. This is TV card for US.



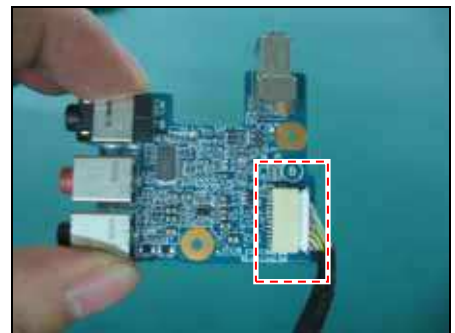
Step 37. Remove the Audio Board.



Step 38. Use a screwdriver to remove the marked screw.



Step 39. Lift the Audio Board up and to the left.



Step 40. Disconnect the Audio Harness as shown.

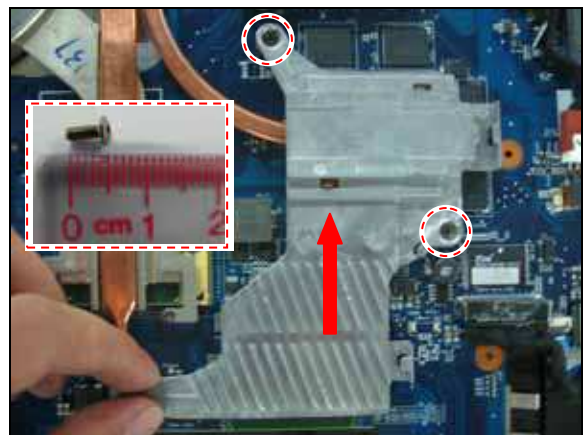
1. AUDIO HARNESS
2. VIDEO HEAT SINK



Step 41. Remove the VIDEO HEAT SINK and Cooling Unit.



Step 42. Remove the AUDIO HARNESS.
Note the routing of the cable.



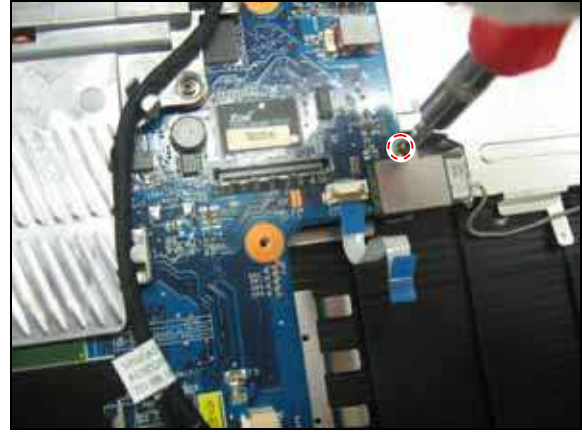
Step 43. Use a screwdriver to remove the marked two screws, then lift the VIDEO HEAT SINK up.

VGN-ARxx Series Disassemble Instructions

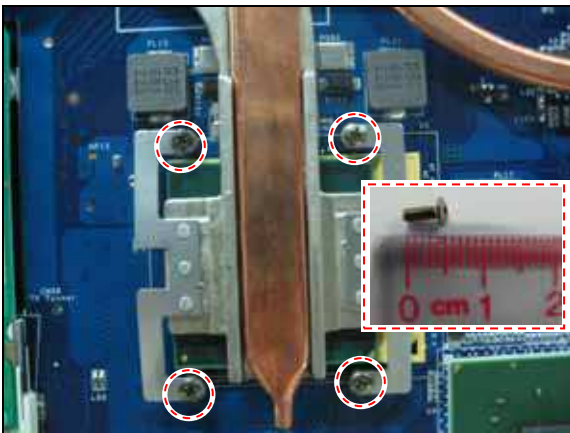
1. HDD Power Board Harness
2. Bluetooth Module
3. Cooling Unit



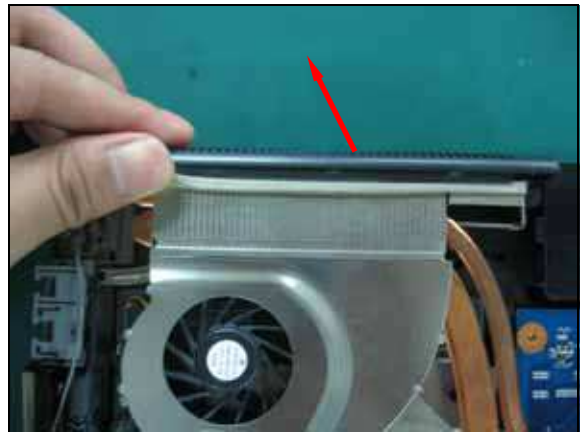
Step 44. Remove the HDD Power Board Harness.



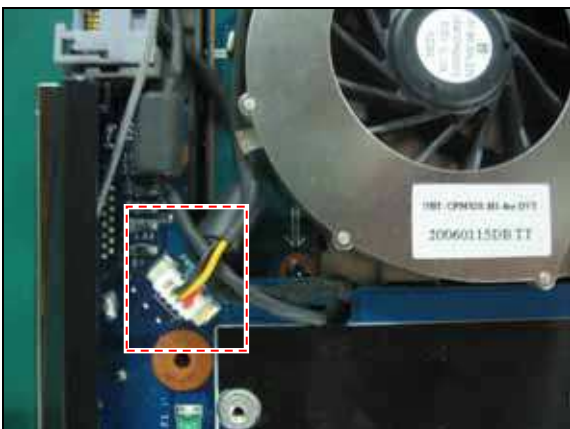
Step 45. Use a screwdriver to remove the marked screw, then remove the Bluetooth Module.



Step 46. Use a screwdriver to remove the marked four screws.



Step 47. Remove the Cooling Unit Cover.

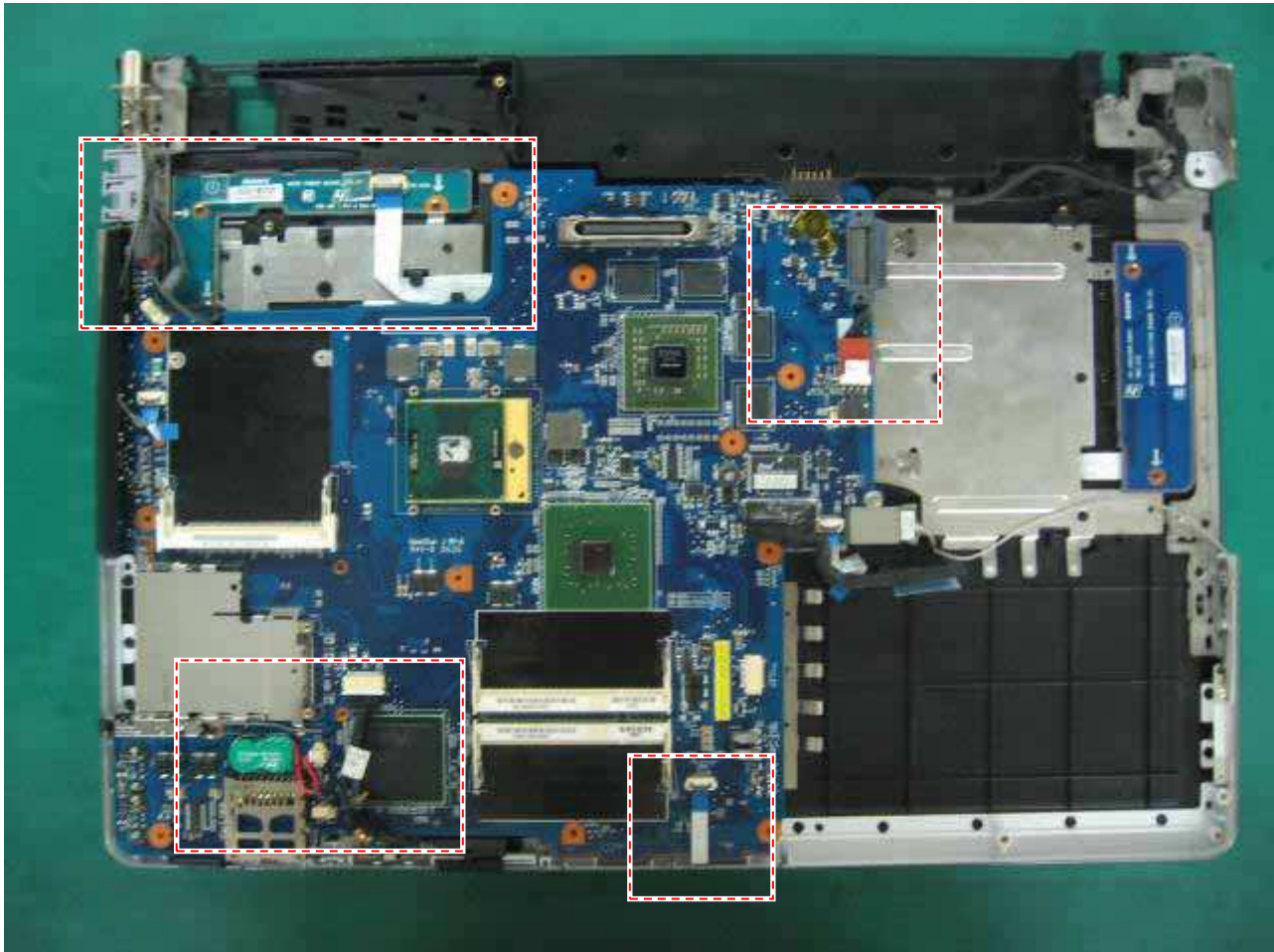


Step 48. Disconnect the Fan cable and remove the Cooling Unit from the system.

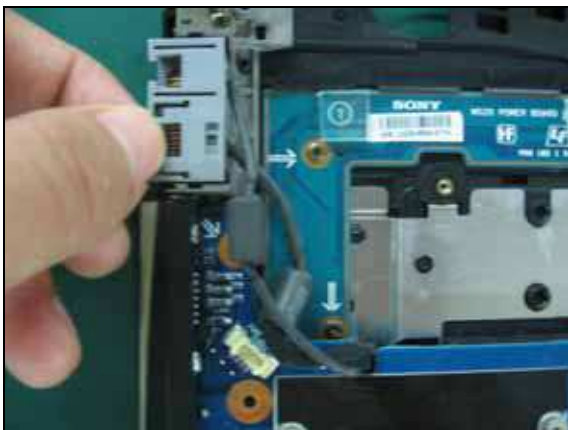


Step 49. Use a screwdriver to rotate the screw 180 degree. Gently remove the CPU.

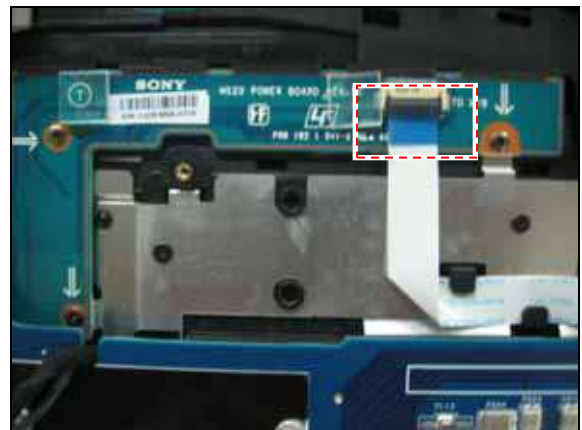
1. RJ-45/RJ-11 HARNESS
2. Power Switch Board cable



Step 50. Remove the RJ-45/RJ-11 Harness, Power Switch cable, Microphone cable, TOUCHPAD cable and DC JACK Harness.



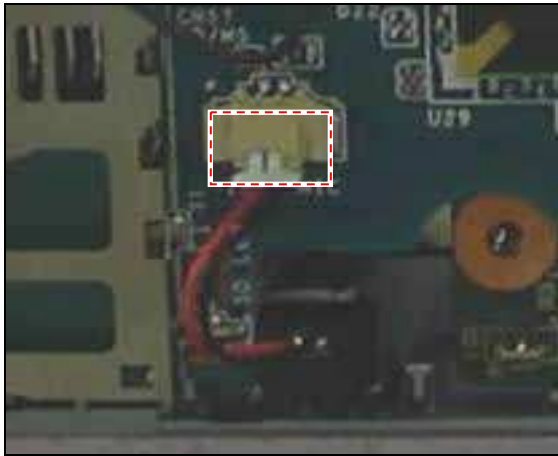
Step 51. Lift the RJ-45/RJ-11 HARNESS up.



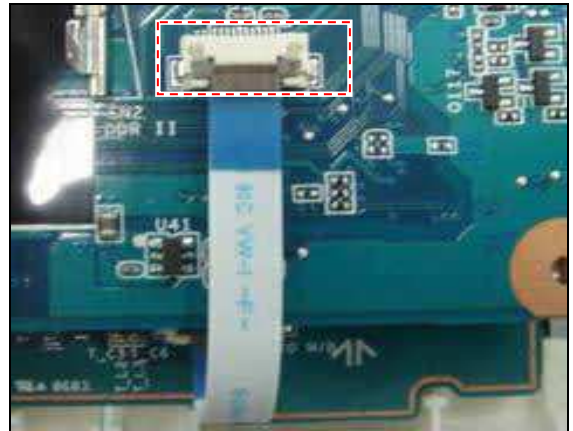
Step 52. Disconnect the Power Switch Board cable.

VGN-ARxx Series Disassemble Instructions

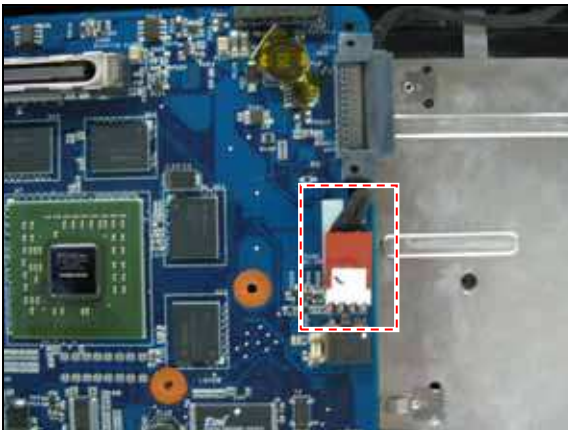
1. Microphone cable and TOUCHPAD cable
2. DC JACK HARNESS
3. IR Board HARNESS



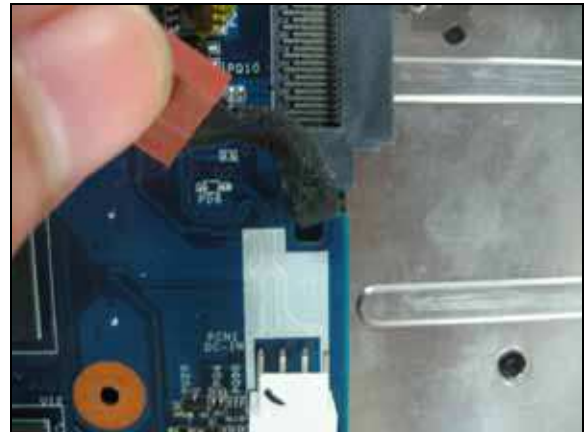
Step 53. Disconnect the Microphone cable.



Step 54. Disconnect the TOUCHPAD cable.



Step 55. Disconnect the DC JACK HARNESS.

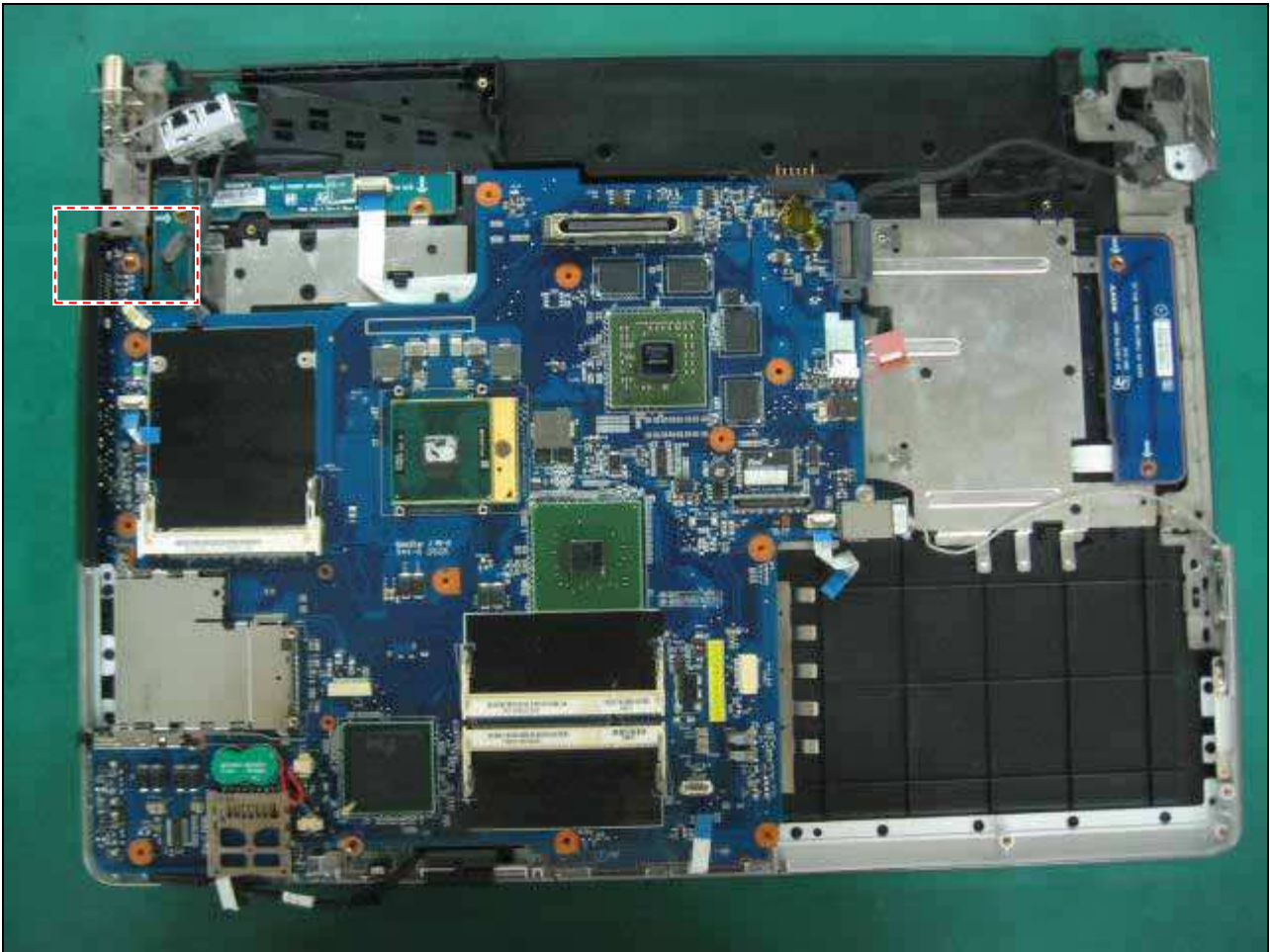


Note the routing of the DC Jack Harness.

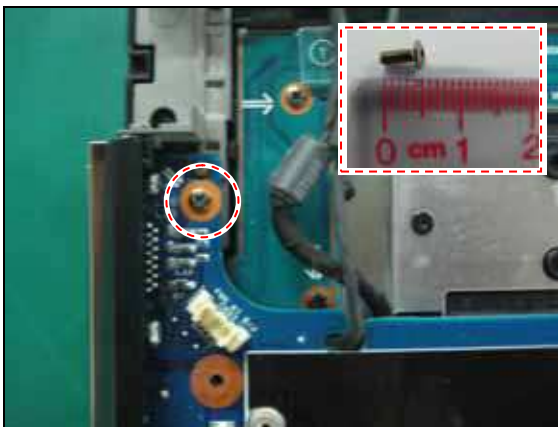


Step 56. Disconnect the IR Board HARNESS.

1. Mother Board



Step 57. Remove the Mother Board.

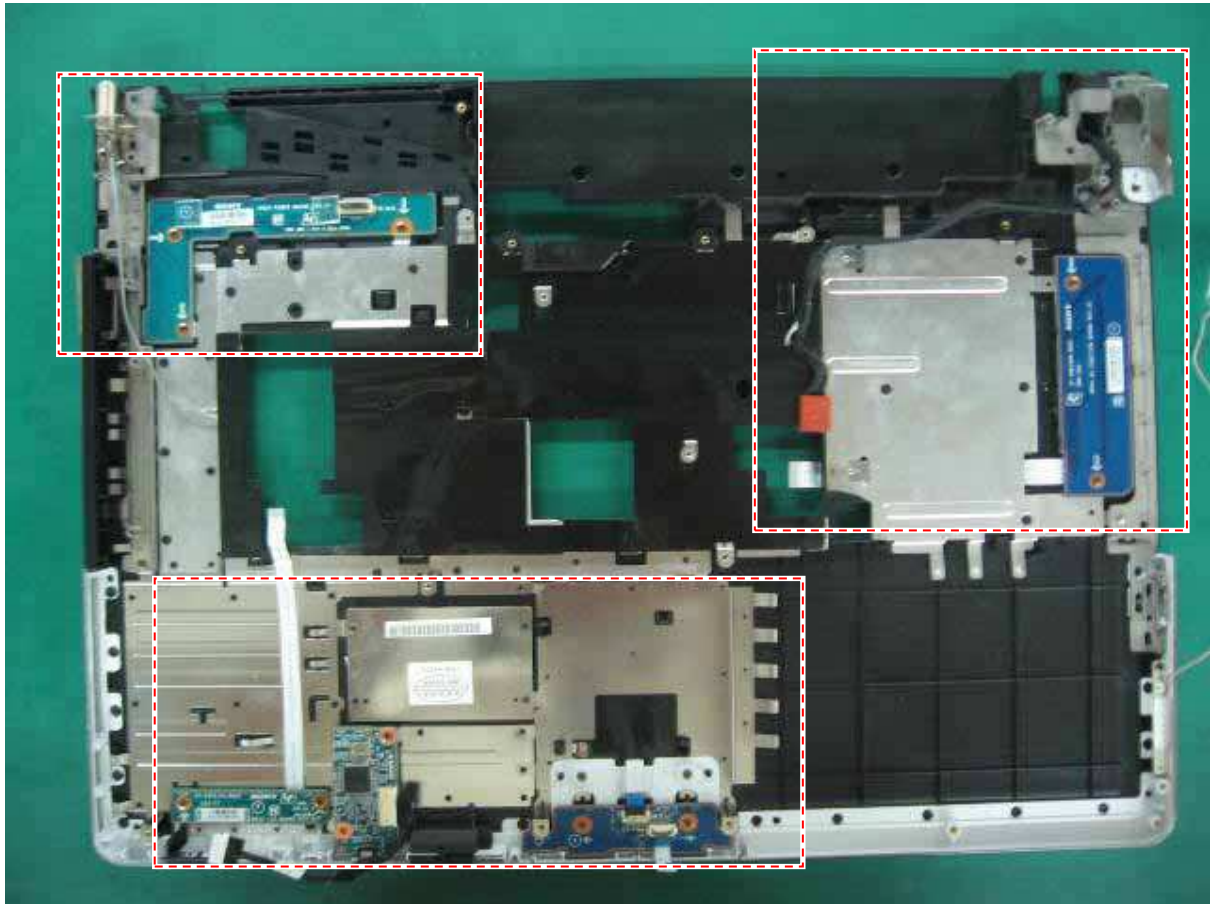


Step 58. Use a screwdriver to remove the marked screw.



Step 59. Lift the Mother Board up from the right side and remove to the right.

1. AV Function Board
2. Power Switch Board



Step 60. Remove the AV Function Board, Power Switch Board, FeliCa module, LED Board, IR Board, TOUCHPAD Board, RF and DC JACK HARNESS.



Step 61. Use a screwdriver to remove the marked two screws. Then, remove the AV Function Board.



Step 62. Use a screwdriver to remove the marked three screws. Then, remove the Power Switch Board.

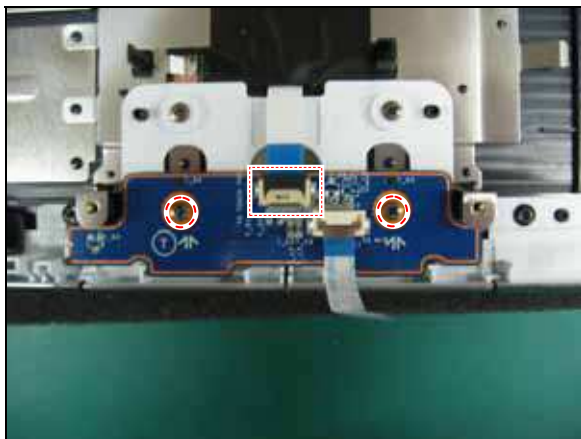
- 1.FeliCa Module
- 2.Touchpad Board, LED Board and IR Board
3. RF



Step 63. Use a screwdriver to remove the marked two screws. Then, remove the FeliCa module.



Step 64. Use a screwdriver to remove the marked three screws. Then remove the LED Board and IR Board.



Step 65. Use a screwdriver to remove the marked two screws and remove marked cable. Then, remove the TOUCHPAD Board.



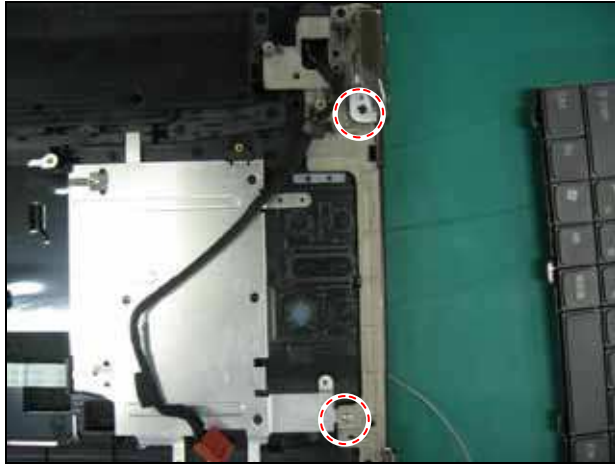
Step 66. Use a screwdriver to remove the marked two screws. Then, remove the RF.



Step 67. Remove DC JACK HARNESS.
Note the routing the DC JACK HARNESS.

1.Audio Door

2.DC Jack Harness



Step 68. Use a screwdriver to remove the marked two screws.



Step 69. Remove the Audio Door.



Step 70. Pull out the DC Jack Harness.

