
Packard Bell

EasyNote MZ series

Disassembly Manual



Table of Contents

| | |
|---|----|
| Overview | 3 |
| Technician Notes..... | 3 |
| Disassembly Instructions..... | 3 |
| Reassembly Instructions | 3 |
| Required Tools | 3 |
| Battery | 4 |
| Memory | 4 |
| Wireless LAN adapter (Mini-PCI or Mini PCI-Express card)..... | 6 |
| Hard disk | 6 |
| Optical drive | 7 |
| Keyboard | 9 |
| LCD Panel Assembly..... | 11 |
| Topcover and touchpad..... | 12 |
| Mainboard | 13 |
| Modem (optional) | 13 |
| USB Board | 13 |
| CPU and CPU fan | 14 |
| DC Jack..... | 15 |
| Speakers | 15 |
| LCD Panel..... | 15 |
| Wireless LAN antenna..... | 17 |
| Inverter board | 17 |
| Reassembly Notes | 18 |
| Notice | 18 |

Overview

This document contains step-by-step disassembly instructions for the EasyNote MZ series. The instructions are illustrated where necessary with images of the part of the device that is being removed or disassembled.

Packard Bell reserves the right to make changes to the EasyNote MZ series without notice.

Technician Notes

Only technicians authorized by Packard Bell B.V. should attempt to repair this equipment. All troubleshooting and repair procedures are detailed to allow only subassembly/module level repair. Because of the complexity of the individual boards and subassemblies, no one should attempt to make repairs at the component level or to make modifications to any printed wiring board. Improper repairs can create a safety hazard. Any indication of component replacement or printed wiring board modifications may void any warranty or exchange allowances.

Disassembly Instructions

When disassembling the unit, follow these general rules:

- n Turn off the power and disconnect all cables.
- n Label all removed connectors. Note where the connector goes and in what position it was installed.
- n Do not disassemble the unit into parts that are smaller than those specified in the instructions.

Reassembly Instructions

Reassembly is the reverse of the disassembly process. Use care to ensure that all cables and screws are returned to their proper positions. Check that no tools or any loose parts have been left inside the product. Check that everything is properly installed and tightened.

Required Tools

All disassembly procedures can be performed using the following tools:

- n Phillips (#1 bit) screwdriver
- n Small flat blade screwdriver

Battery

1. Push the two sliders outwards and pull out the battery.

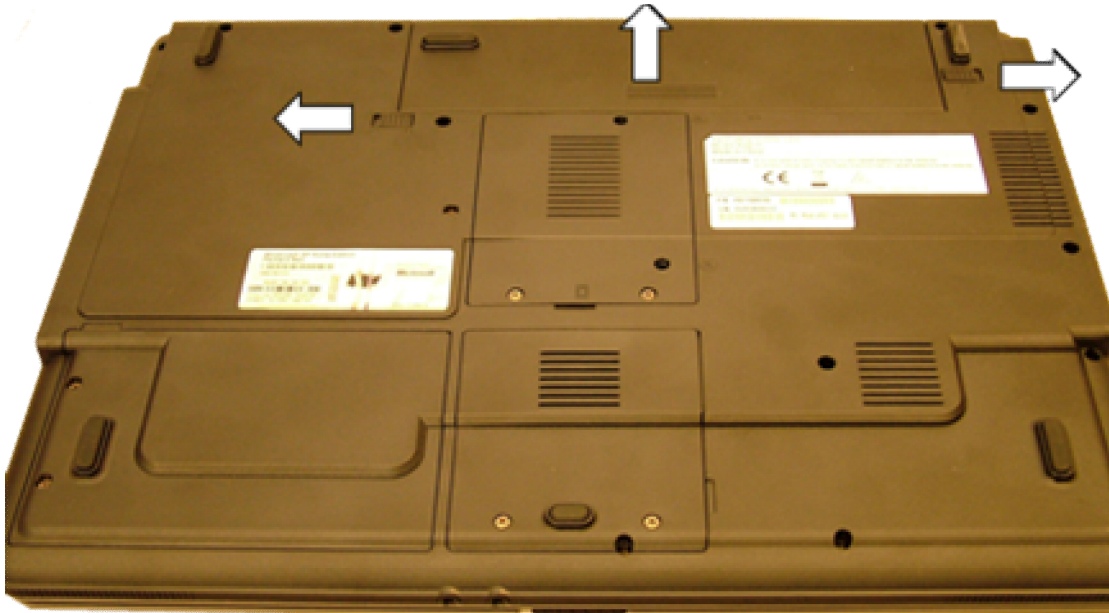


Fig. 1 The bottom of the notebook.

Memory

1. Remove battery as described above.
2. Unlock the 2 screws of the memory cover. Note that the screws will not come loose completely; they will stay attached to the cover.

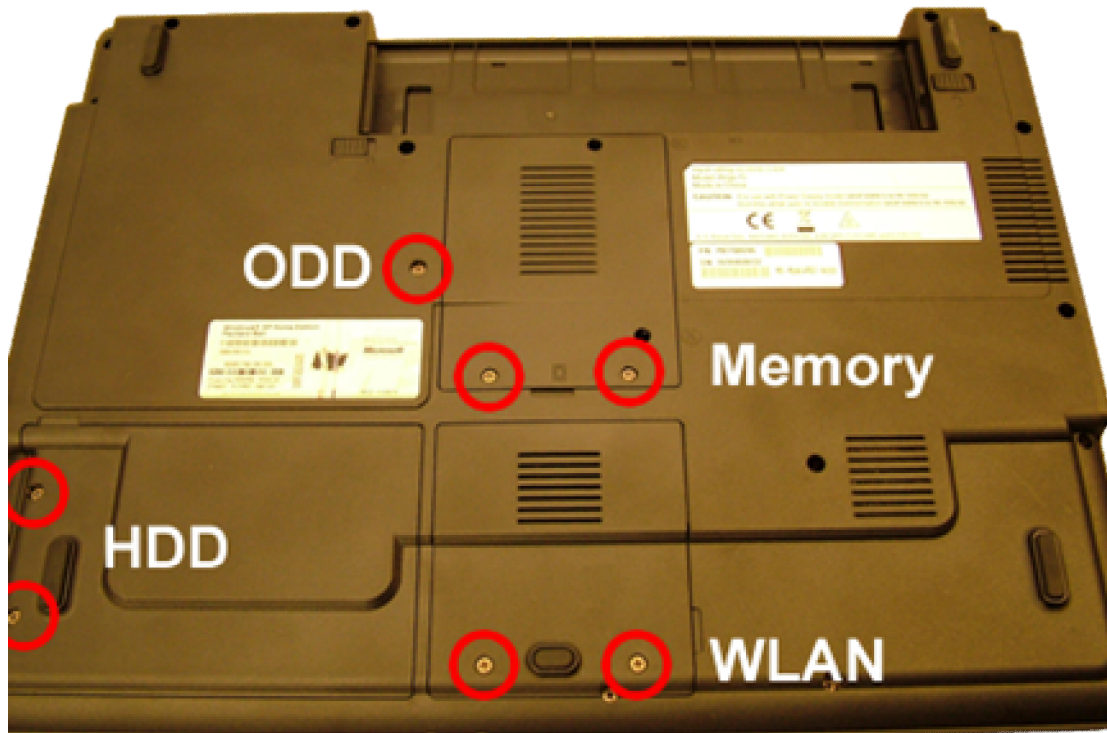


Fig. 2 The bottom of the notebook.

3. Lift the door out.



Fig. 3 *The memory compartment.*

4. Push aside the clips securing the memory module.



Fig. 4 *The memory module*

5. Lift the module from the slot.

Note: In case there are 2 modules built in, you will have to remove the top module before removing the bottom module.

Wireless LAN Adapter (Mini-PCI or Mini PCI-Express)

1. Remove the battery as described above.
2. Unlock the 2 screws of the add-on card cover. Note that the screws will not come loose completely; they will stay attached to the cover. See Fig. 2.
3. Lift the door out.
4. Disconnect the WLAN antennas from the card. Make a note for each cable whether it is connected to 'main' or 'aux'.
5. For mini-PCI (EasyNote MZ35 / MZ36): Push aside the two clips securing the WLAN adapter card.

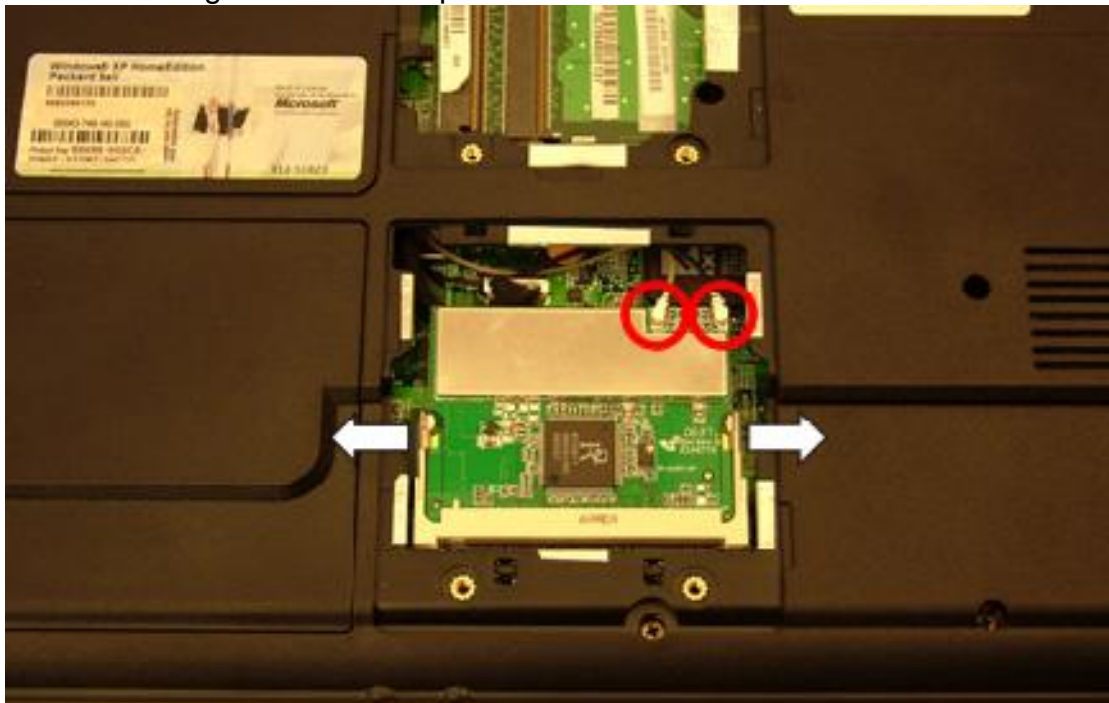


Fig. 5 *The WLAN module.*

6. For mini-PCI Express (EasyNote MZ45): remove the two screws securing the WLAN adapter.
7. Pull the card from its slot.

Hard Disk Drive

1. Remove the battery as described above.
2. Unlock the 2 screws of the HDD cover. Note that the screws will not come loose completely; they will stay attached to the cover. See Fig. 2.
3. Lift the door out.
4. Pull the hard disk loose from its connector.

5. Lift out the hard disk.
6. Remove the 4 screws from the bracket.

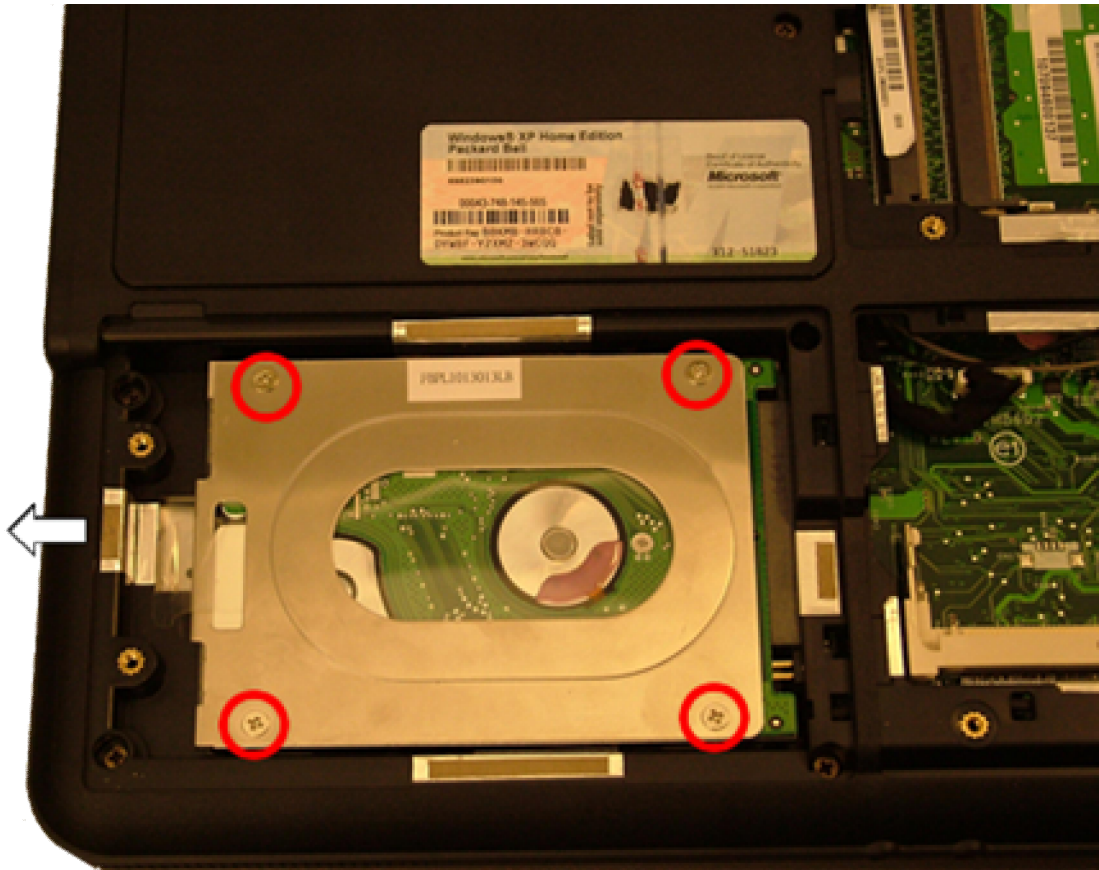


Fig. 6 *The hard disk drive.*

7. Lift the hard disk from the bracket.

Optical Drive

1. Remove the battery as described above.
2. Remove the screw securing the optical drive. See Fig. 2.
3. Use the emergency eject-function of the optical drive to open the tray.
4. Pull the optical drive out.

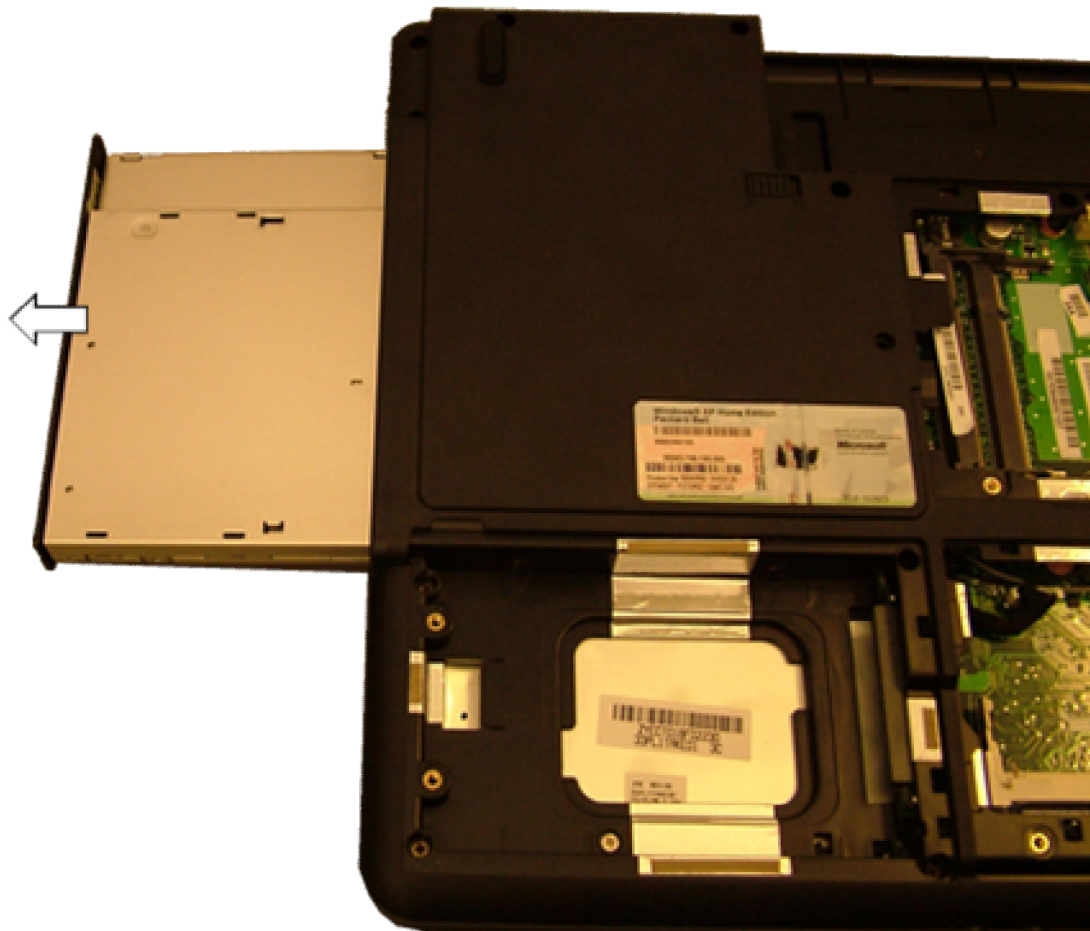


Fig. 7 The optical drive.

5. Remove the 2 screws to and take away the optical drive bracket.

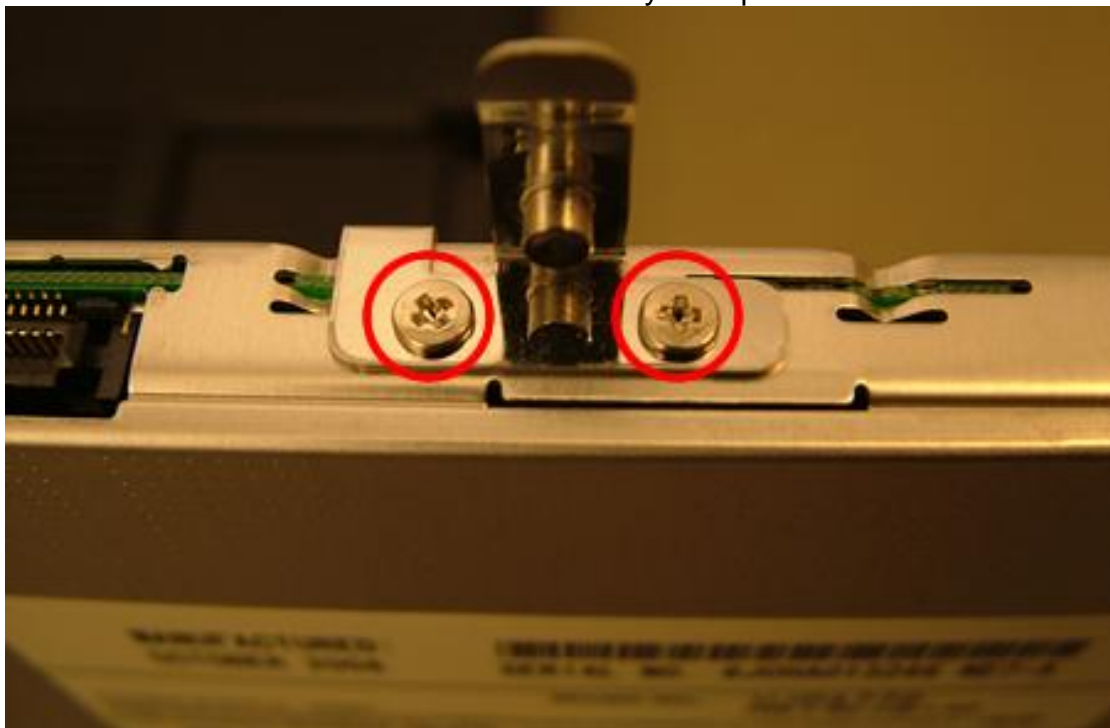


Fig. 8 The optical drive bracket.
EasyNote MZ Disassembly Manual

6. Remove the bezel of the optical: it is clicked in place. Use a small flathead screwdriver to push the 2 clips loose. After that, take away the bezel from the drive.

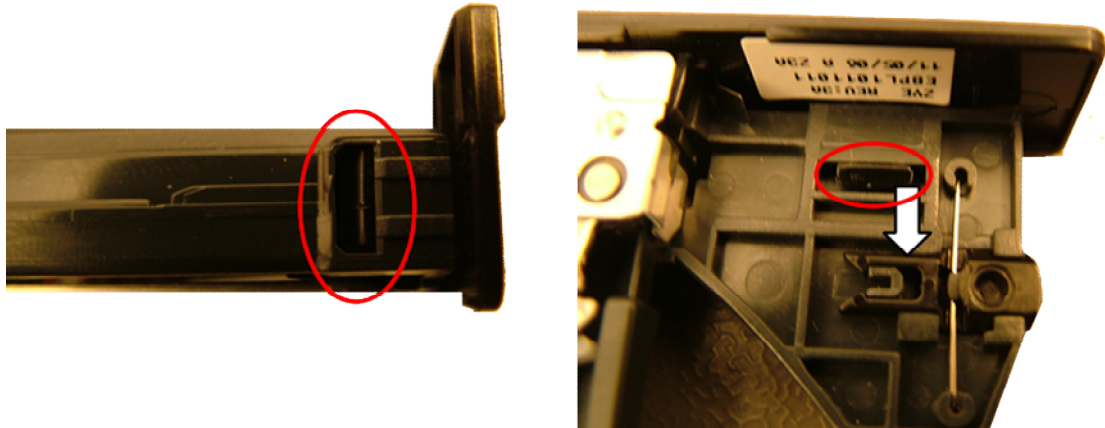


Fig. 9 The optical drive bezel.

Keyboard

1. Remove the battery as described above.
2. Remove the 2 screws below the hinge covers of the LCD.

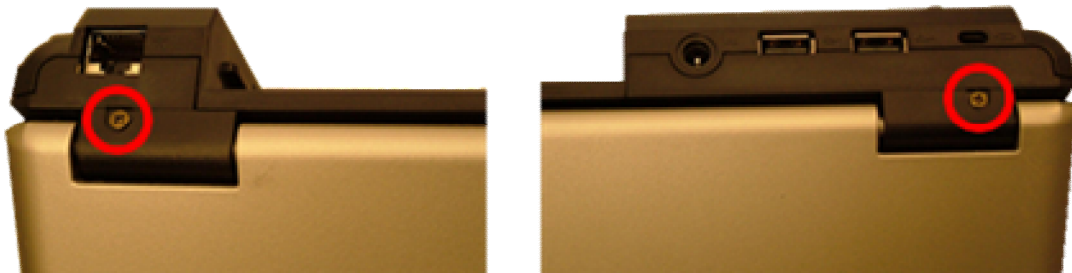


Fig. 10 Hinge cover screw.

3. Remove the keyboard cover. If needed, you can carefully pry the keyboard cover loose with a flathead screwdriver in the hinge covers.



Fig. 11 The keyboard cover.

4. On the bottom base, remove the 2 screws in the memory compartment.

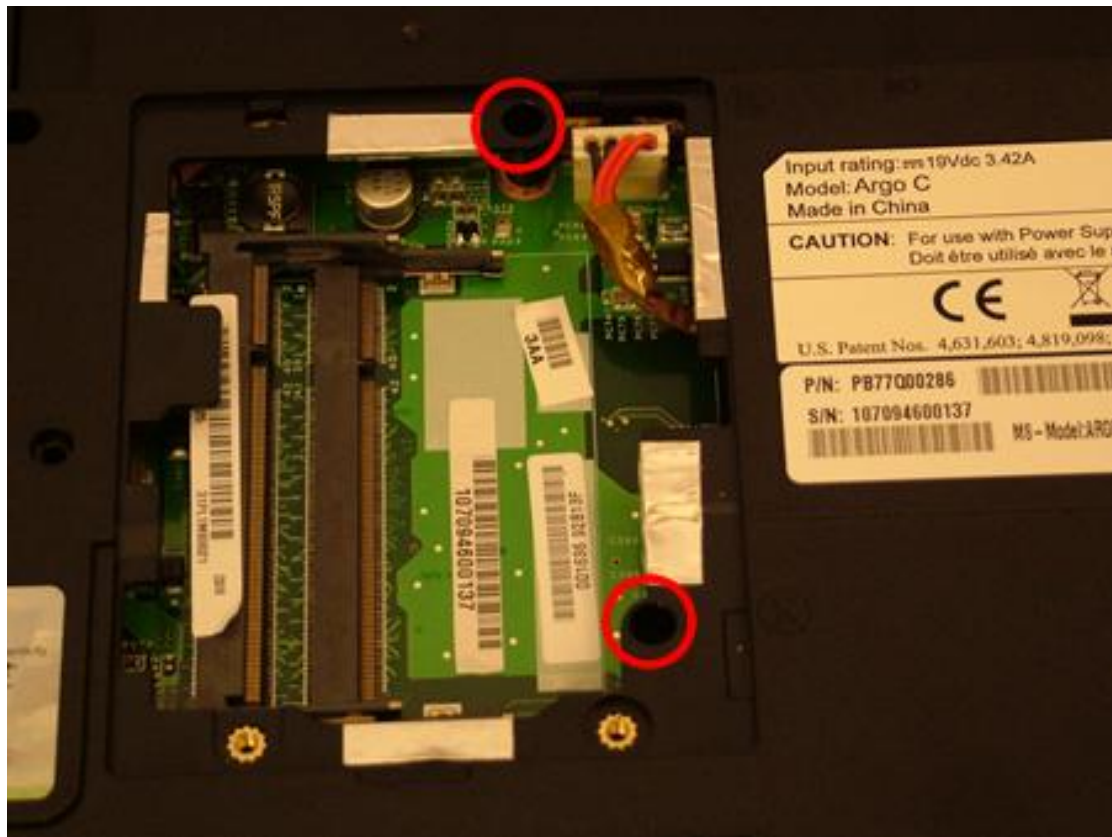


Fig. 12 *The memory compartment.*

5. Lift the keyboard.
6. Disconnect the keyboard flatcable.

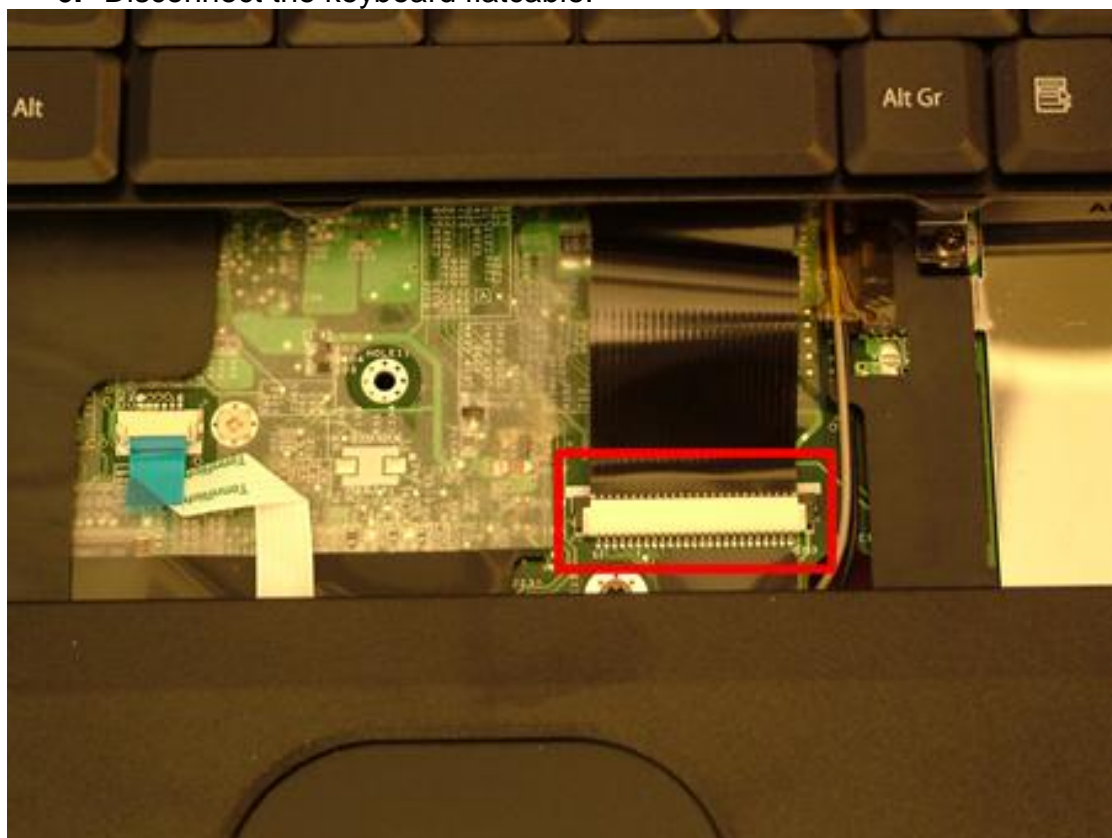


Fig. 13 *The bottom of the notebook.*

7. Remove the keyboard.

LCD Panel Assembly

1. Remove the battery and keyboard cover as described above (up to step 3).
2. Disconnect the WLAN antenna as described under “WLAN Adapter” (up to step 4).
3. Clear the wireless antenna (it is taped and clipped in place).
4. Disconnect the LCD cable.
5. Remove the 4 screws in the hinges.

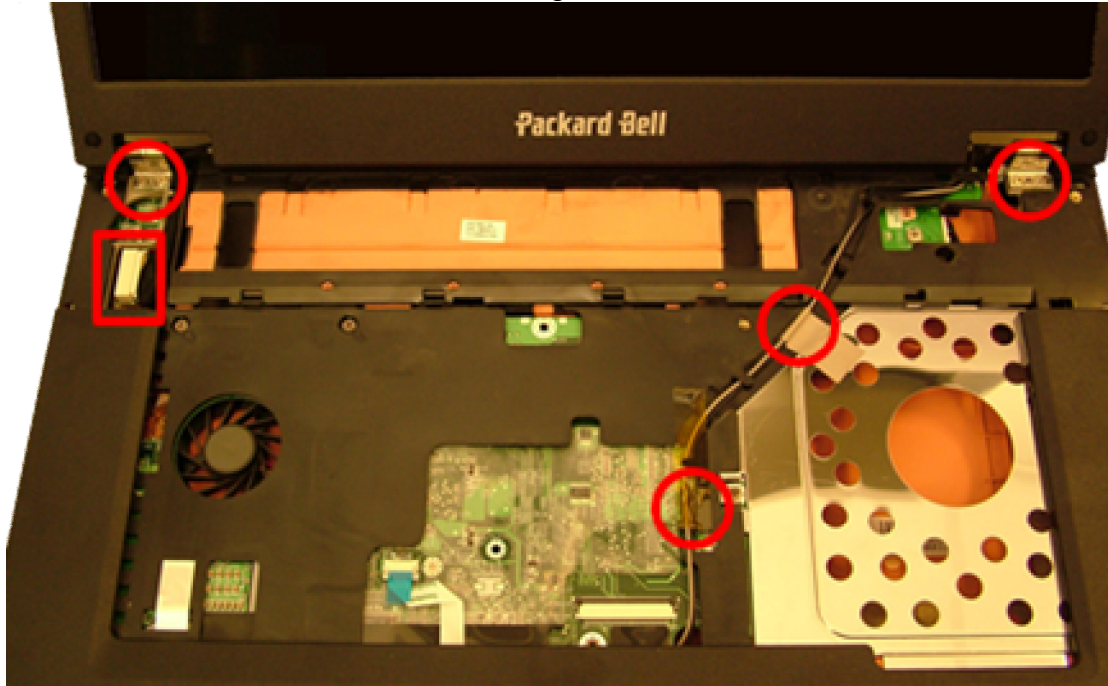


Fig. 14 *The WLAN antenna and hinge screws.*

6. Remove the 2 screws in the bottom base.



Fig. 15 *The bottom of the notebook.*

7. Put the LCD panel in a 90 degree angle with the base unit and lift the LCD panel out.

Top Cover and Touchpad

1. Follow all steps above to remove the battery, keyboard, LCD panel, hard disk and optical drive.
2. Remove the 6 screws from the top cover.
3. Disconnect the flatcable of the touchpad.
Note: the flatcable only needs to be pulled out, it is not secured.

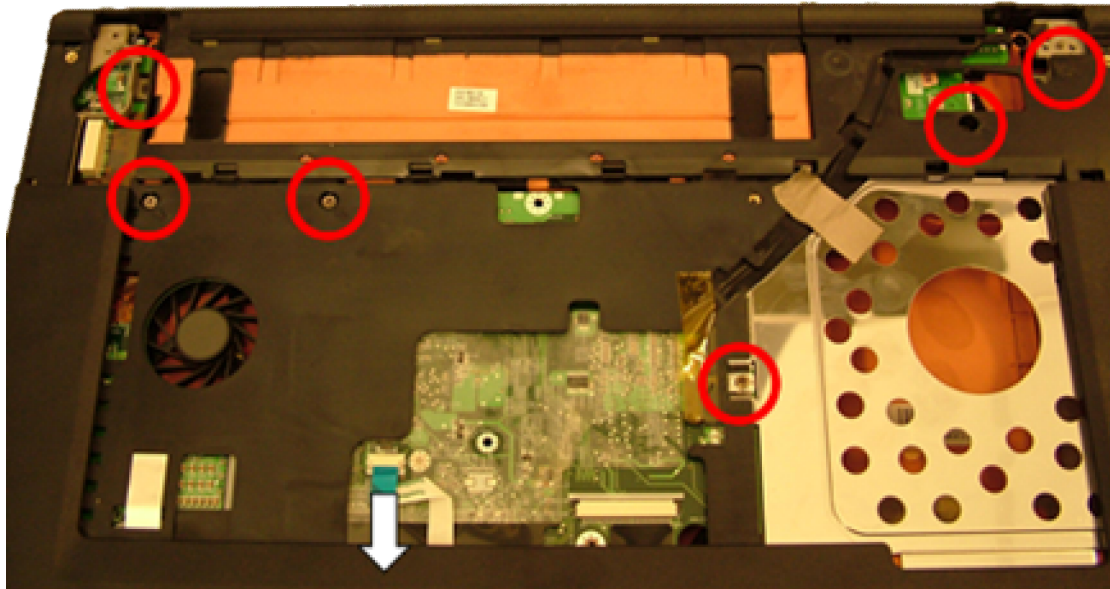


Fig. 16 The touchpad cover.

4. Remove all remaining screws from the bottom base (17x).

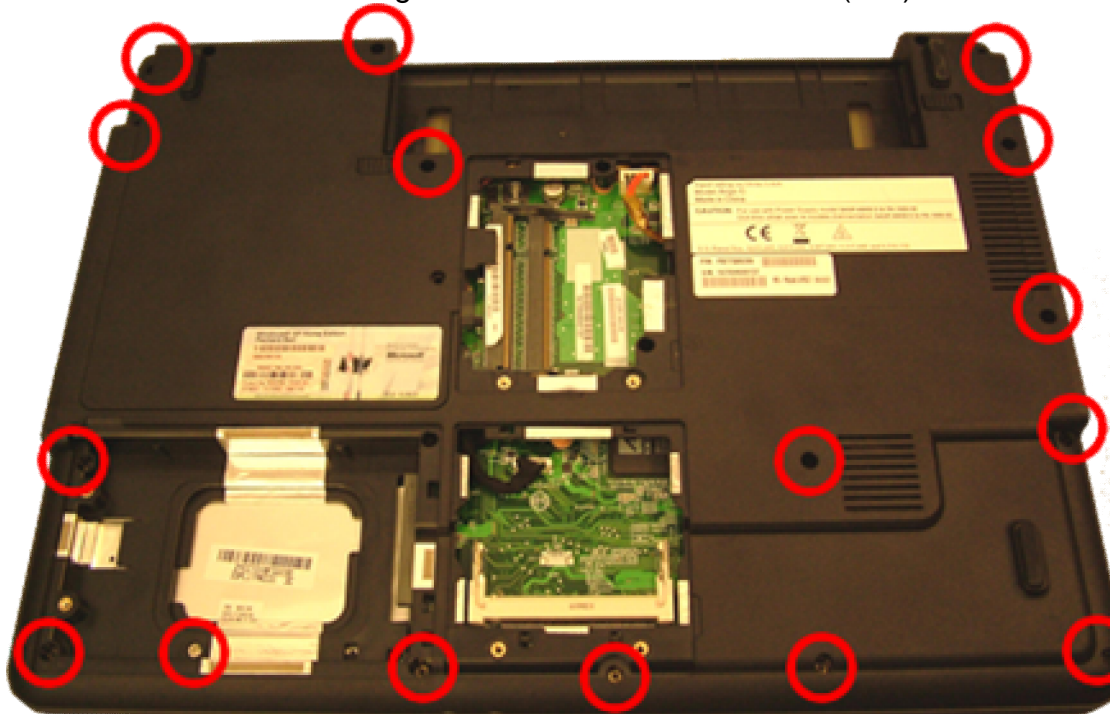


Fig. 17 The bottom of the notebook.

5. Take away the top cover.

Note: The touchpad is shipped as part of the top cover and does not require further disassembly.

Mainboard

1. Follow all steps outlined above.
2. Disconnect the power cable and USB port cable via the memory compartment and wireless LAN adapter compartment.
3. Remove the two screws in the mainboard.

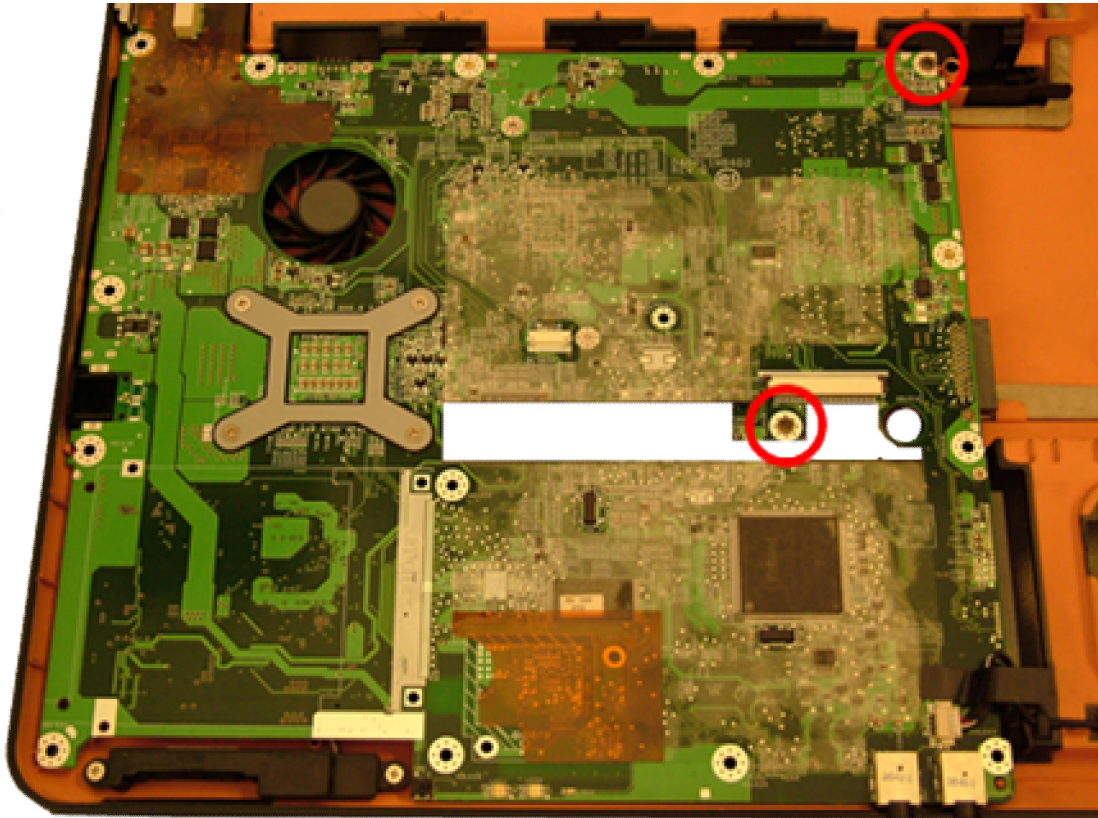


Fig. 18 *The mainboard.*

4. Remove the two hex-bolts adjacent to the VGA port.
5. Lift out the motherboard.
6. Remove the CPU fan and CPU as described below.

Modem (optional)

Note: The modem is part of the motherboard.

USB Board

1. Follow all steps to remove the top cover.
2. Disconnect the cable from the USB board.
3. Remove the two screws securing the USB board.

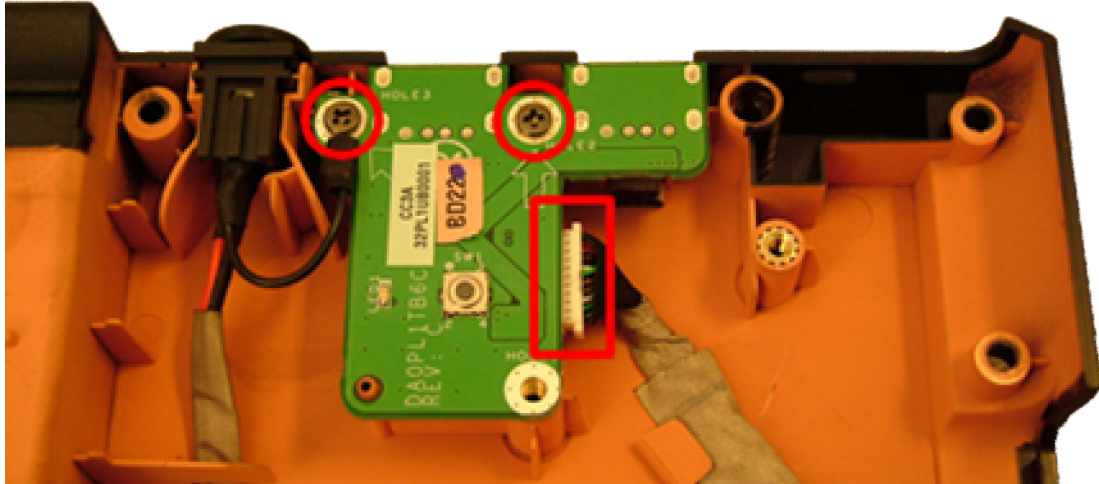


Fig. 19 The USB board.

4. Lift out the USB board.

Note: To replace the cable to the USB board, the motherboard needs to be removed.

CPU and CPU fan

1. Follow all steps to remove the mainboard.
2. Disconnect the power cable of the fan.
3. Remove the 2 screws of the north-bridge heatsink.
4. Remove the 4 screws of the CPU heatsink, in the designated order (1 to 4 engraved in metal clips).

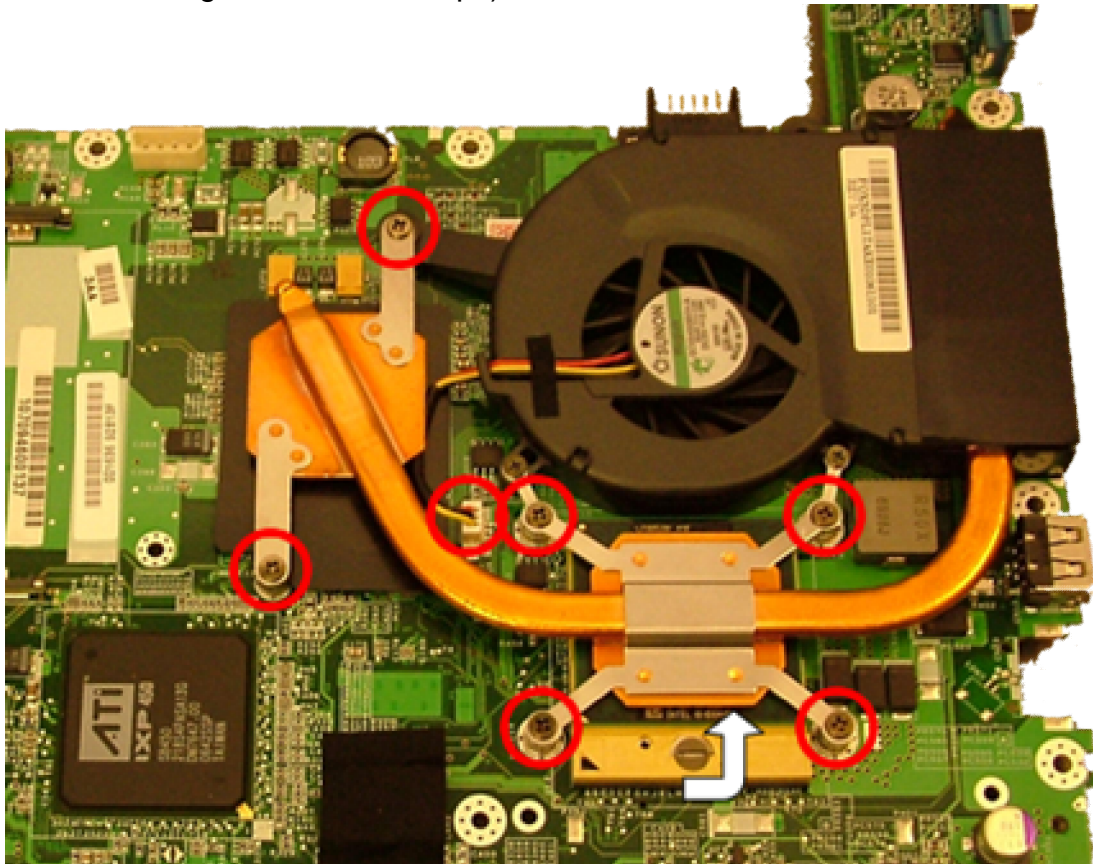


Fig. 20 The heatsinks for the CPU and north-bridge.

5. Lift out the CPU fan.
6. To remove the CPU from the socket, turn the screw in the socket 180 degrees to release the CPU.
7. Lift out the CPU.

DC Jack

1. Follow all steps to remove the mainboard.
2. Remove the two screws grounding the DC jack cable (one on DC board, one near battery connector).

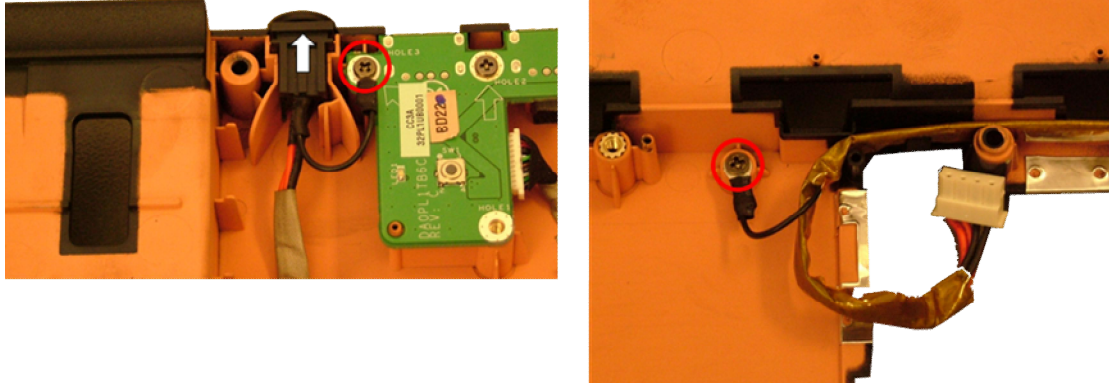


Fig. 21 The DC jack.

3. Lift the DC jack straight up out of the bracket.

Speaker Assembly

1. Follow all steps to remove the top cover.
2. Disconnect the speaker cable from the mainboard.
3. Remove the 4 screws securing the 2 speakers.

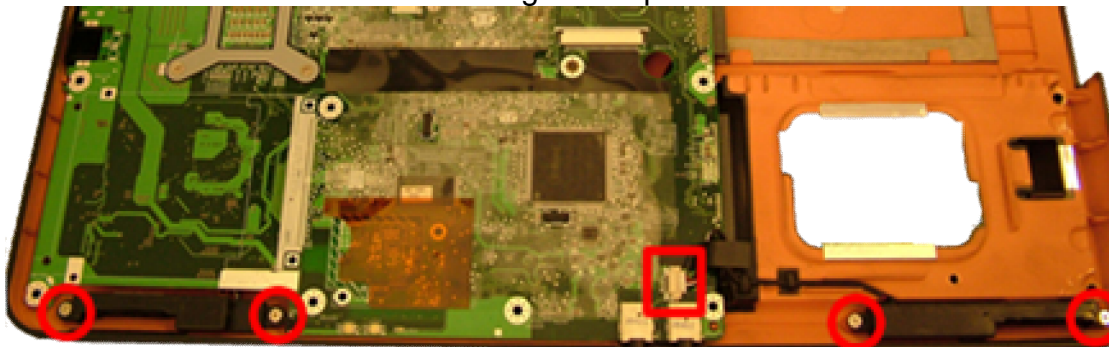


Fig. 22 The speaker assembly.

4. Release the speaker cables from the clips.
5. Lift out the speakers

Note The two speakers are one part; they cannot be replaced individually.

LCD Panel

1. Follow all steps to remove the LCD Panel Assembly.
2. Remove the 6 rubber stoppers in the LCD bezel.
3. Remove the 6 screws.



Fig. 23 *The LCD panel assembly.*

4. Take off the bezel (clicked in place).
5. Disconnect the cables from the inverterboard.
6. Remove the 6 screws of the LCD panel.

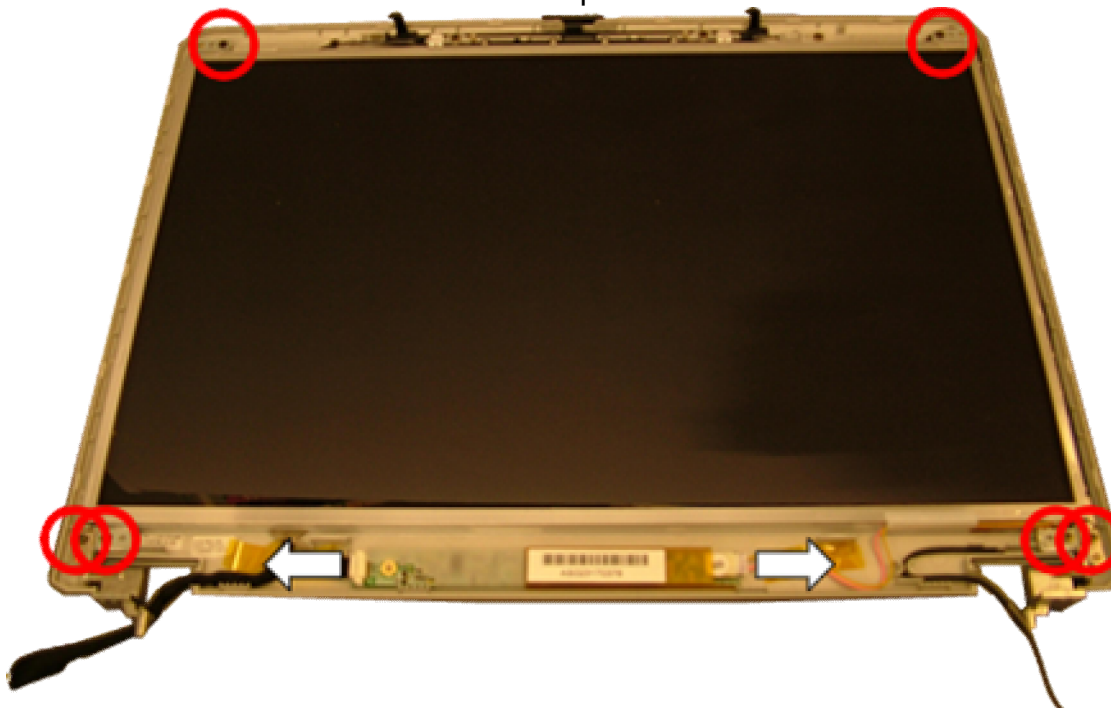


Fig. 24 *LCD panel assembly after top cover removal.*

7. Lift out the LCD panel.
8. Remove the 6 screws of the LCD panel brackets, 3 on each side of the panel.
9. Disconnect the LCD cable.

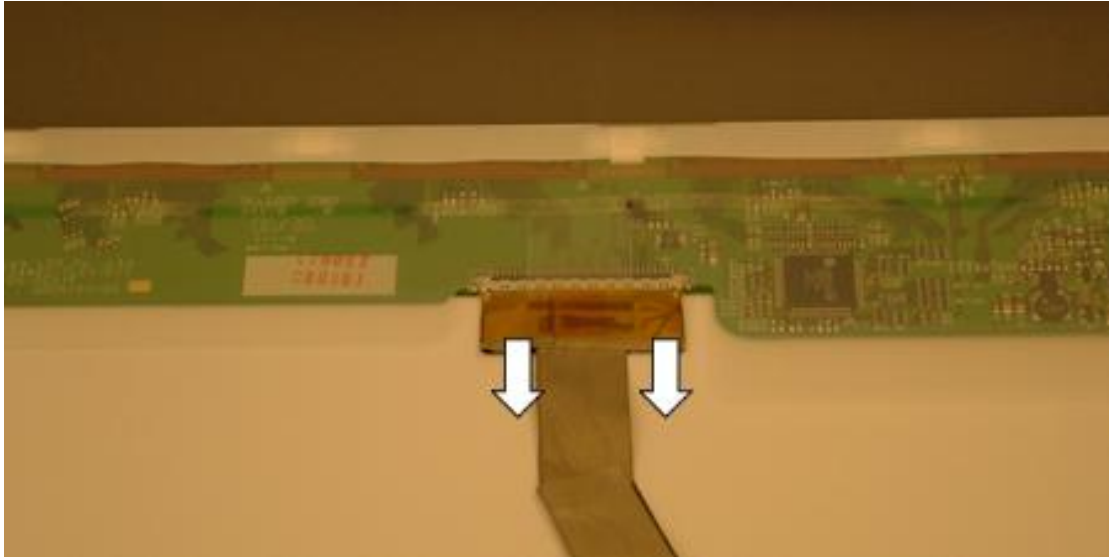


Fig. 25 The LCD cable.

Wireless LAN Antenna

1. Follow the steps for the LCD panel up to step 4.
2. Remove the two screws on the top of the LCD panel.



Fig. 26 The wireless LAN antenna.

3. Remove the antenna. Note that it is taped in place.

Inverter Board

1. Follow the steps for the LCD panel up to step 5.
2. The inverterboard is glued in place. Gently tear it out.



Reassembly Notes

When reassembling the device, please take notice of the order in which the parts can be put back and reattached.

Notice

The information in this guide is subject to change without notice.

This guide contains information protected by copyright. No part of this guide may be photocopied or reproduced in any form or by any means without prior written consent from Packard Bell B.V.

PACKARD BELL B.V. SHALL NOT BE LIABLE FOR TECHNICAL OR EDITORIAL ERRORS OR OMISSIONS CONTAINED HEREIN; NOR FOR INCIDENTAL OR CONSEQUENTIAL DAMAGES RESULTING FROM THE FURNISHING, PERFORMANCE, OR USE OF THIS MATERIAL.

Copyright © 2007 Packard Bell B.V. All rights reserved.

First Edition: April 2007

Version: 1.0

Packard Bell B.V.