

---

**Packard Bell**

**EasyNote BU Series**

**Disassembly Guide**



## **Table of Contents**

Overview .....	3
Technician Notes.....	3
Disassembly Instructions.....	3
Reassembly Instructions .....	3
Required Tools .....	3
Battery .....	4
Memory .....	4
Hard Disk.....	5
Optical Drive.....	7
CPU and CPU fan .....	9
Keyboard .....	10
Wireless LAN Adapter .....	11
Top Cover.....	12
Bluetooth Module.....	15
Launch Board .....	15
Fingerprint Scanner.....	15
Touchpad .....	17
LCD Assembly.....	17
Main Board .....	18
I/O Board .....	18
LCD Panel.....	19
Inverter Board.....	21
Speakers, Wireless LAN Antennas, Webcam and Microphone.....	21
Reassembly Notes .....	22
Notice .....	22

## Overview

This document contains step-by-step disassembly instructions for the EasyNote BU series. The instructions are illustrated where necessary with images of the part of the device that is being removed or disassembled.

Packard Bell reserves the right to make changes to the EasyNote BU series without notice.

## Technician Notes

Only technicians authorized by Packard Bell B.V. should attempt to repair this equipment. All troubleshooting and repair procedures are detailed to allow only subassembly/module level repair. Because of the complexity of the individual boards and subassemblies, no one should attempt to make repairs at the component level or to make modifications to any printed wiring board. Improper repairs can create a safety hazard. Any indication of component replacement or printed wiring board modifications may void any warranty or exchange allowances.

## Disassembly Instructions

When disassembling the unit, follow these general rules:

- n Turn off the power and disconnect all cables.
- n Label all removed connectors. Note where the connector goes and in what position it was installed.
- n Do not disassemble the unit into parts that are smaller than those specified in the instructions.

## Reassembly Instructions

Reassembly is the reverse of the disassembly process. Use care to ensure that all cables and screws are returned to their proper positions. Check that no tools or any loose parts have been left inside the product. Check that everything is properly installed and tightened.

## Required Tools

All disassembly procedures can be performed using the following tools:

- n Phillips (#1 bit) screwdriver
- n Small flat blade screwdriver

## Battery

1. Unlock the two clips located on the battery and slide out the battery.



Fig. 1 The bottom of the notebook.

## Memory

1. Remove the battery as described under 'Battery'.
2. Remove the five screws and take away the cover.



Fig. 2 The bottom of the notebook.

3. Fold away the protective foil covering half the memory module(s).

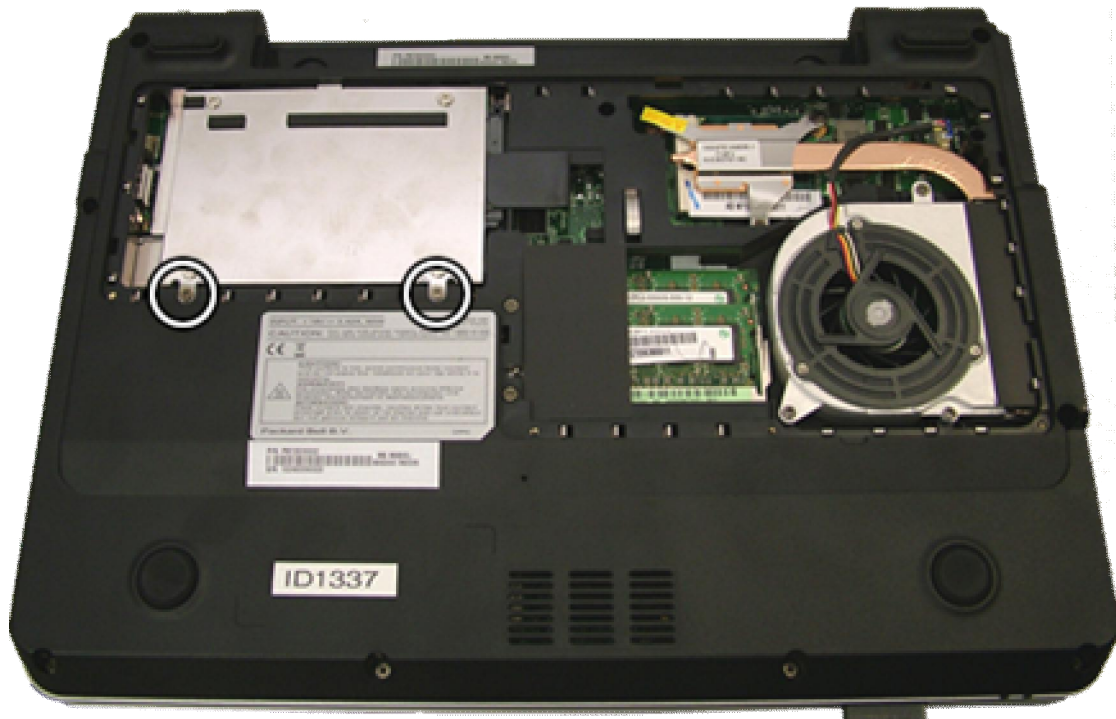


**Fig. 3** *The memory compartment.*

4. Pull the clips aside to release the memory module.

## Hard Disk

1. Remove the battery as described under 'Battery'.
2. Remove the five screws and take away the cover (see Fig. 2).
3. Remove the two screws securing the hard disk.



**Fig. 4** *The hard disk drive.*



4. Use the latch to pull the hard disk loose.
5. Lift out the hard disk.



**Fig. 5** *Lifting out the hard disk drive.*

6. Remove the the four to release the metal bracket from the hard disk.



**Fig. 6** *The hard disk drive bracket.*

7. Lift the bracket from the hard disk.

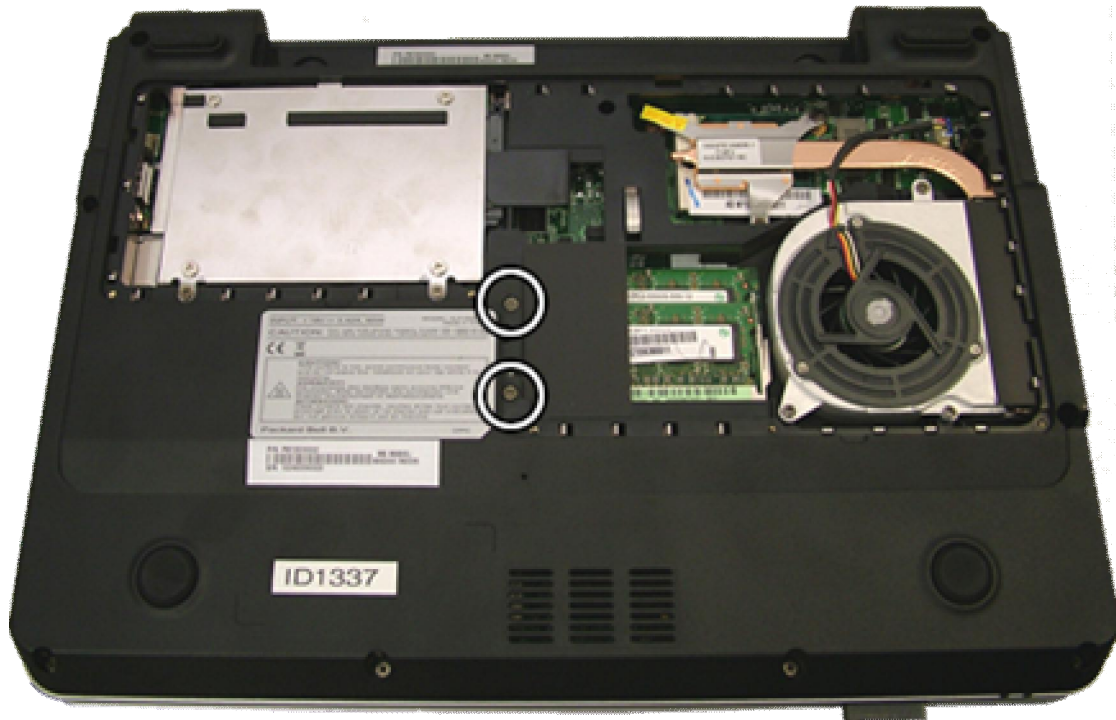
---

**Note:** The EasyNote BU series uses only Serial ATA hard disks. These drives have no jumpers to select Master or Slave mode.

---

## Optical Drive

1. Remove the battery as described under 'Battery'.
2. Remove the five screws and take away the cover (see Fig. 2).
3. Remove the two screws securing the optical drive.



**Fig. 7** *The optical drive.*

4. Use the 'emergency eject' option to open the optical drive.
5. Pull out the optical drive; close the lid when possible.



**Fig. 8** Taking out the optical drive.

6. Remove the two screws and take away the bracket.



**Fig. 9** The optical drive bracket.

7. Push the two clips to release the bezel, and then pull the bezel off.



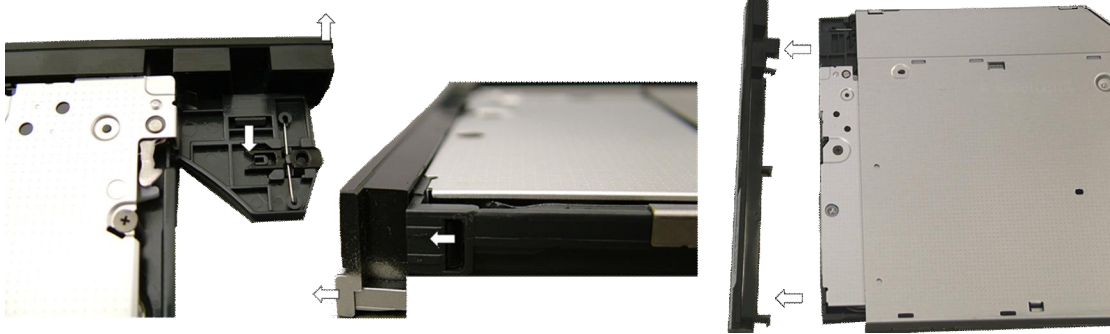


Fig. 10 The optical drive bezel.

## CPU and CPU fan

1. Remove the battery as described under 'Battery'.
2. Remove the five screws and take away the cover (see Fig. 2)..
3. Remove the CPU fan:
  - a. Disconnect the power cable.
  - b. Remove the three screws around the fan (the bottom two are long screws, the other one is of normal size)
  - c. Turn the three screws around the CPU socket halfway loose in the designated order (printed on the metal clips): 1-2-3.
  - d. Now turn these screws completely loose in the same order.
  - e. Lift out the CPU fan.



Fig. 11 The CPU and fan.

4. Turn the screw in the CPU socket 180 degrees to release the CPU.



**Fig. 12** *Unlocking the CPU.*

5. Lift out the CPU.

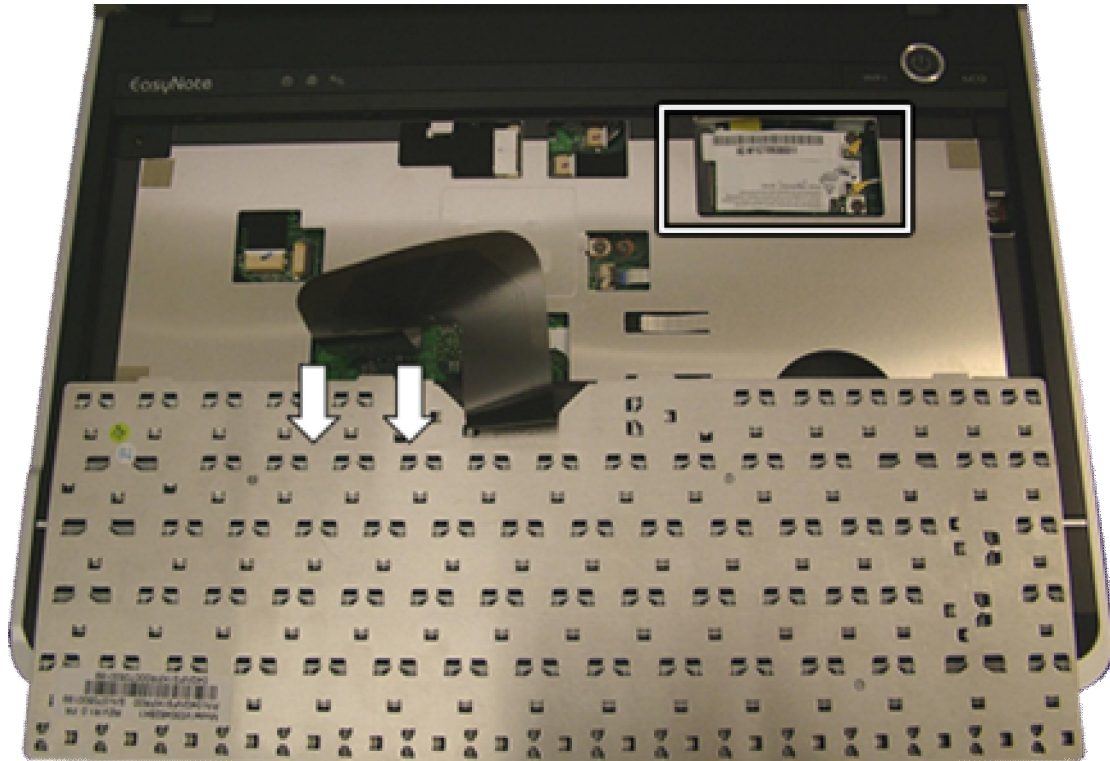
## Keyboard

1. Remove the battery as described under 'Battery'.
2. Push back the four clips and gently lift the keyboard.



**Fig. 13** *The keyboard clips.*

3. Once all four clips are loose, pull the keyboard out. The two clips on the sides of the keyboard should give way. If not, push them aside as well.
4. Gently pull out the keyboard and fold it over.
5. Now disconnect the flat cable.



**Fig. 14** *The keyboard flat cable and wireless LAN adapter.*

6. Lift out the keyboard.

## Wireless LAN Adapter

1. Remove the keyboard as described under 'Keyboard'.
2. The wireless LAN adapter is located right beneath the WiFi button on the top chassis (see Fig. 14).
3. Remove the two screws securing the Wireless LAN Adapter.



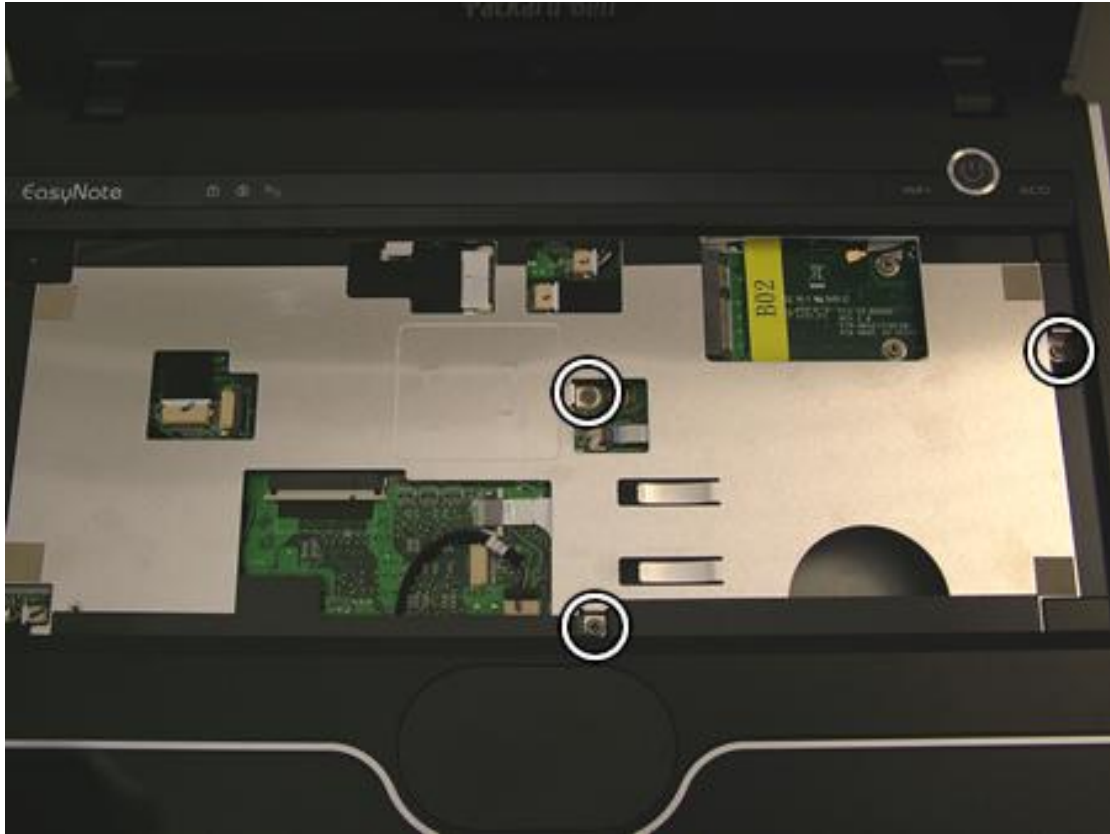
**Fig. 15** *The wireless LAN adapter.*

4. Lift the card and disconnect the antennas. Note for each antenna (black/grey) to which connector (main/aux) it was connected.
5. Lift out the card.

## Top Cover

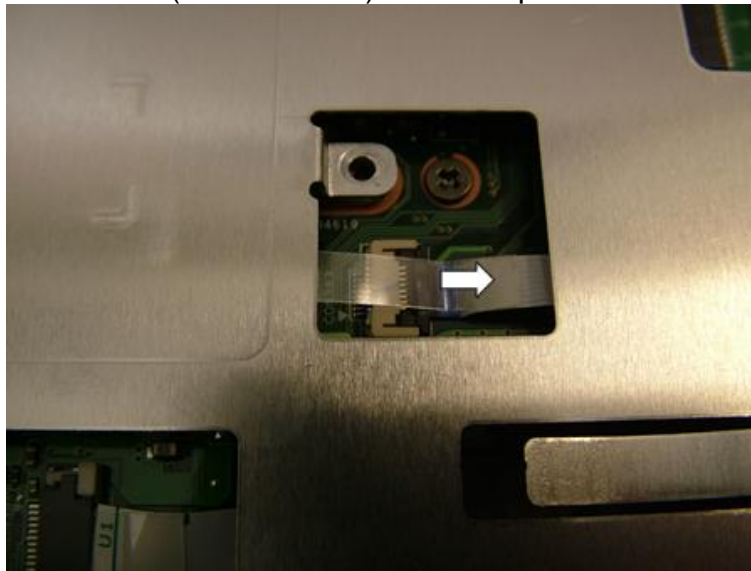
1. Remove the keyboard, hard disk, optical and CPU fan as described in the sections above.





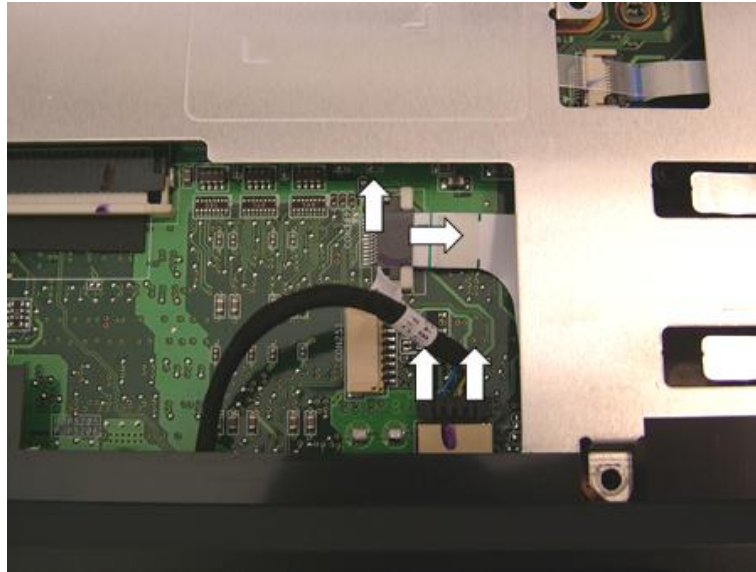
**Fig. 16** The heat shield and location of the cables.

2. Disconnect two flat cables and the round cable with the connector.
- a. Flat cable (launch board): lift the clip and slide out the cable.



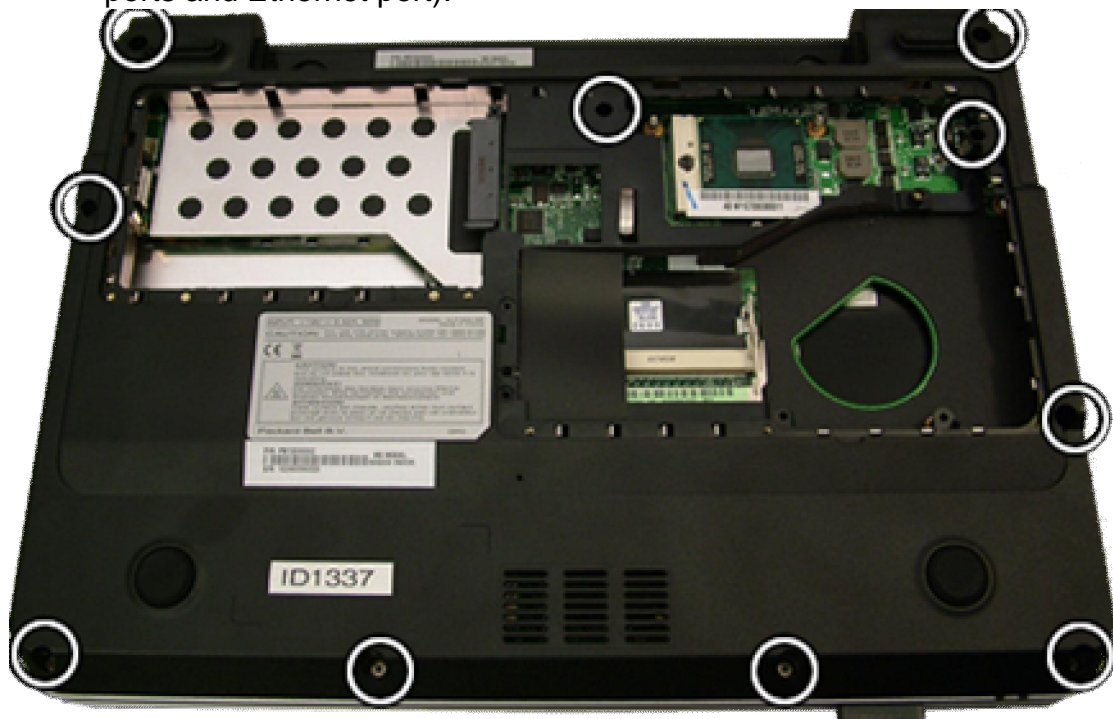
**Fig. 17** The launch board cable.

- b. Rounded cable (Fingerprint reader): pull out.
- c. Flat cable (touchpad cable): push the white clips to the right (see picture) to release the cable. Pull out the cable.



**Fig. 18** *The fingerprint and touchpad cable.*

3. Remove three screws in the heat shield (see Fig. 16).
4. Remove the screws from the bottom base. Note that two are located near the hole for the CPU heat sink, and that one screw is longer (located between the optical drive space and the side mounted USB ports and Ethernet port).



**Fig. 19** *The top cover screws.*

5. Remove any cards or dummy cards from the card reader.
6. Take away the cover top.

## Bluetooth Module

1. Remove the top cover as described under 'Top Cover'.
2. The Bluetooth module is located to the front in the bottom cover.
3. Disconnect the cable and lift out the module.

## Launch Board

This contains the power button, WiFi button and ECO button.

1. Remove the top cover as described under 'Top cover'.
2. The launch board is mounted in the top cover.

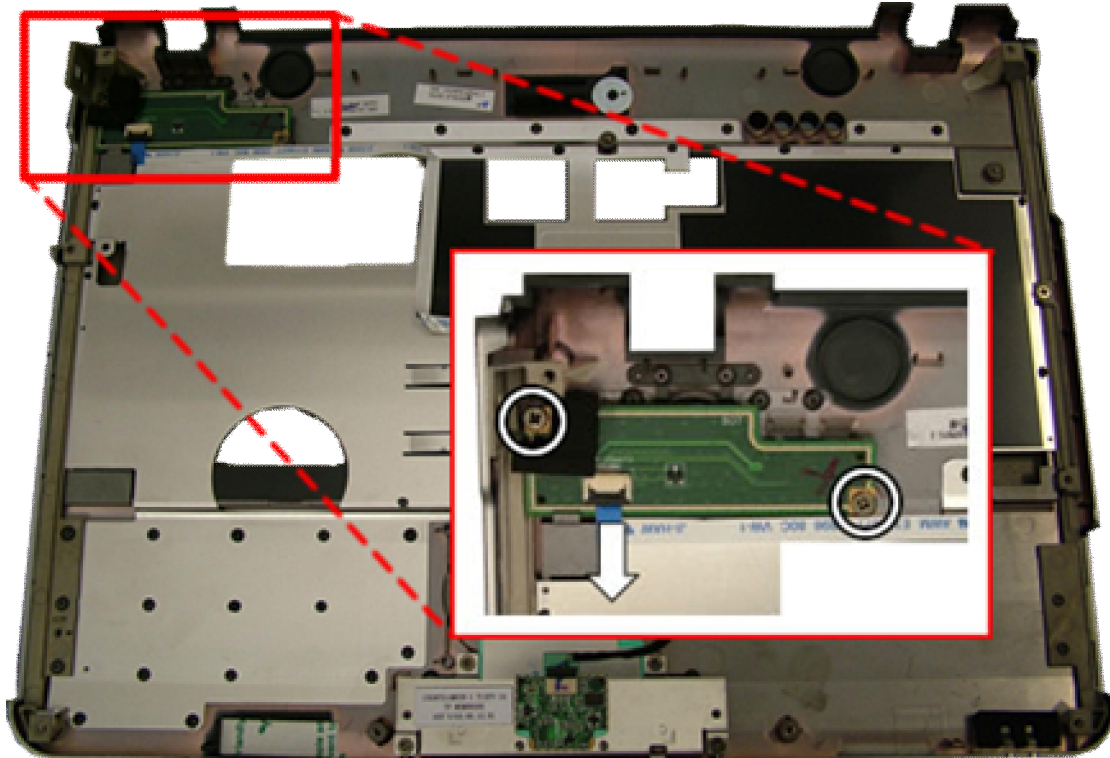


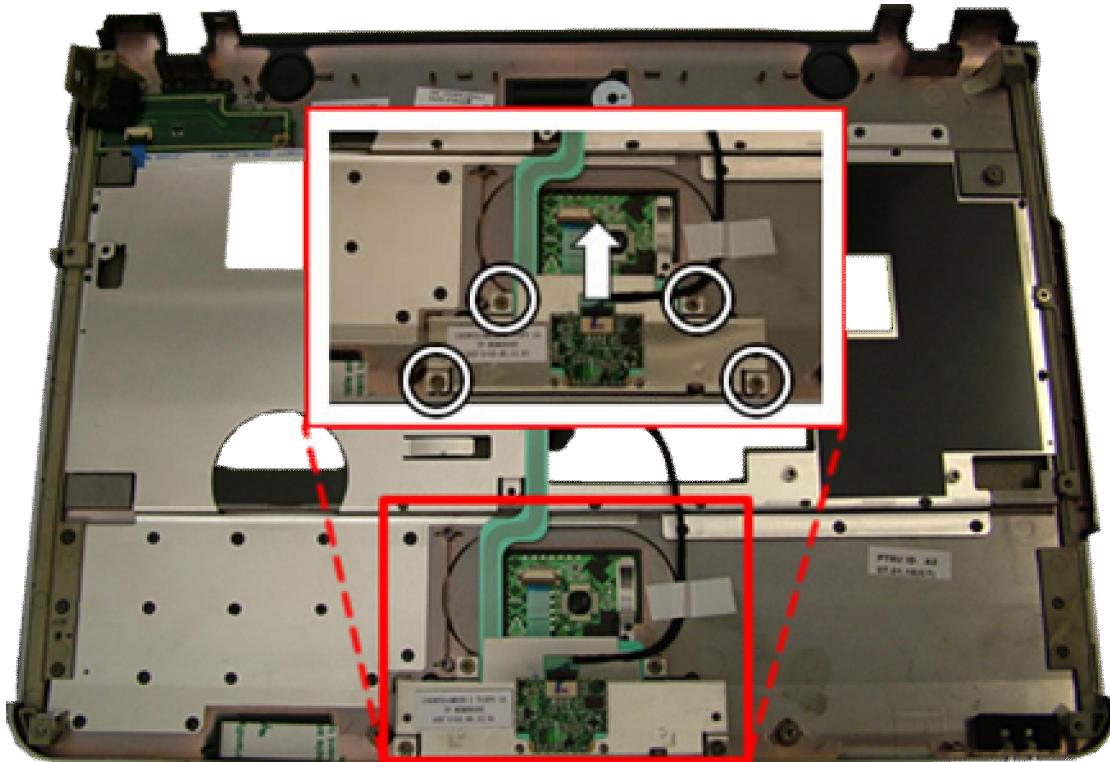
Fig. 20 The launch board.

3. Disconnect the cable from the launch board.
4. Remove these two screws.
5. Lift out the launch board.

## Fingerprint Scanner

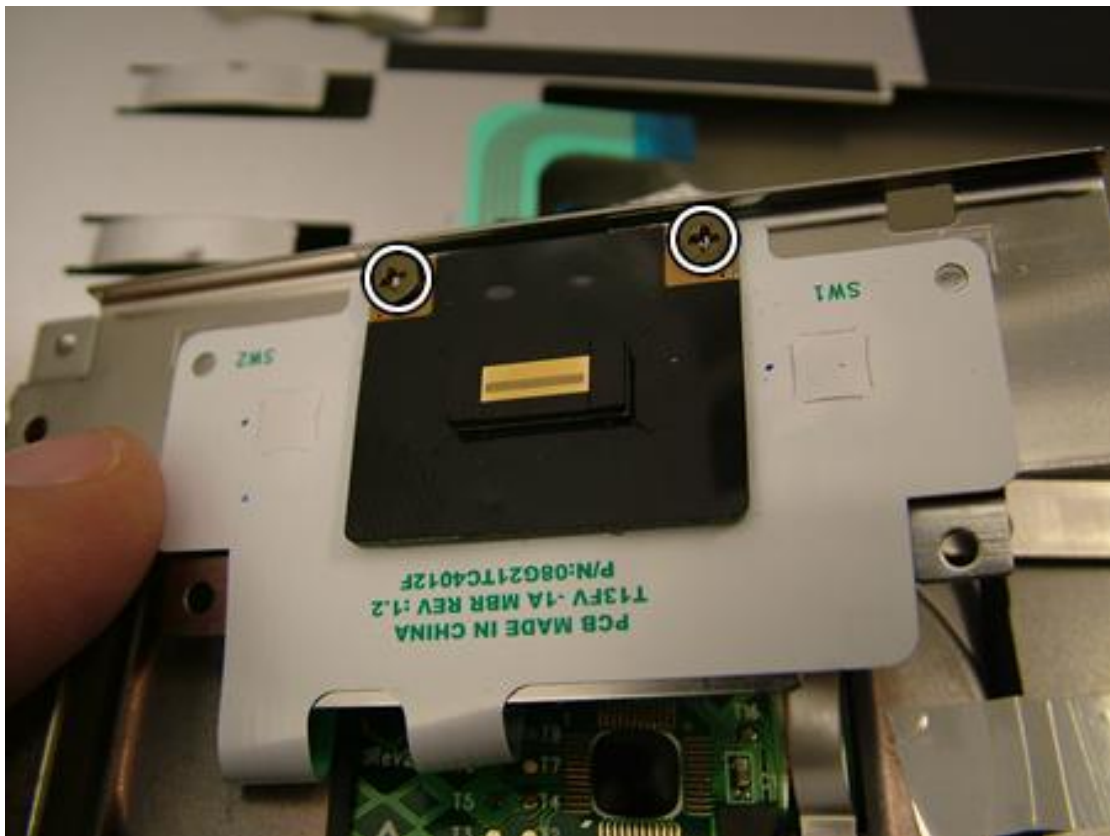
1. Remove the top cover as described under 'Top Cover'.
2. The fingerprint scanner is located in de touchpad on the top cover.





**Fig. 21** The fingerprint scanner.

3. Disconnect the cable of the fingerprint scanner.
4. Remove the four screws of the metal bracket.
5. Gently lift the metal bracket. Note that it does not come loose. Fold it upside down avoiding sharp bends in the flat cables.
6. Remove the two screws.



**Fig. 22** The fingerprint scanner bottom screws.



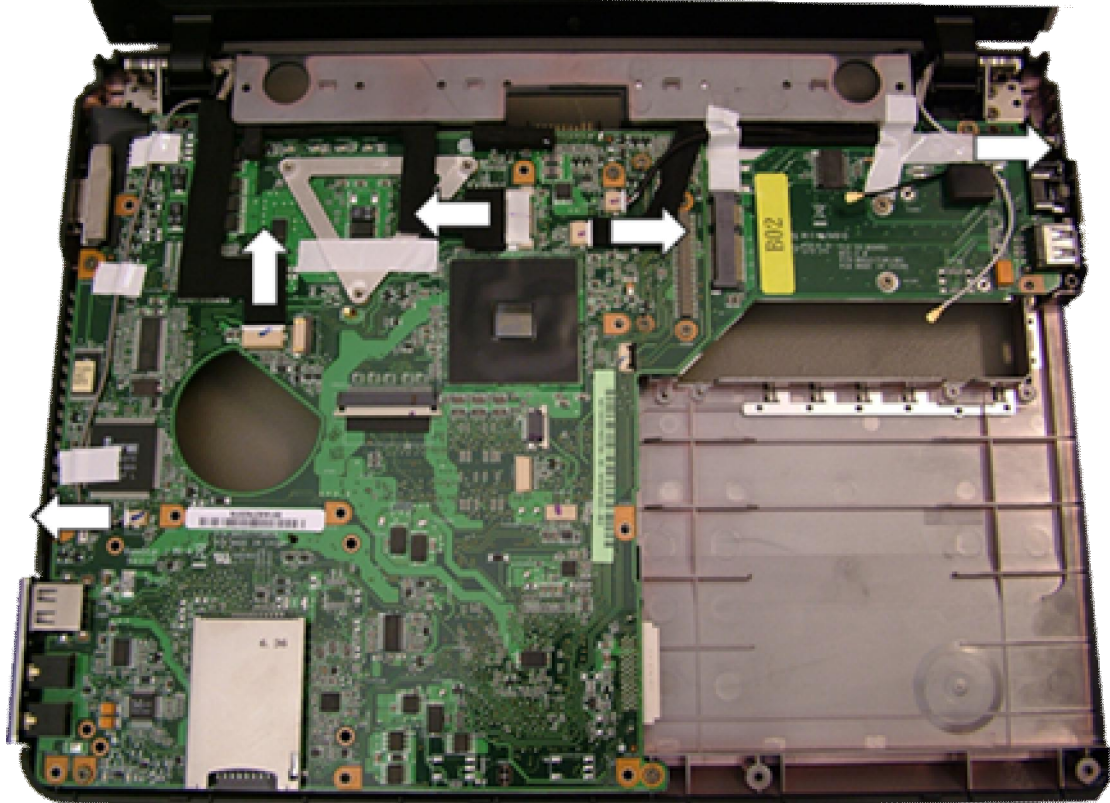
7. Lift out the fingerprint scanner module.

## Touchpad

The touchpad assembly is shipped as part of the top cover and does not need further disassembly.

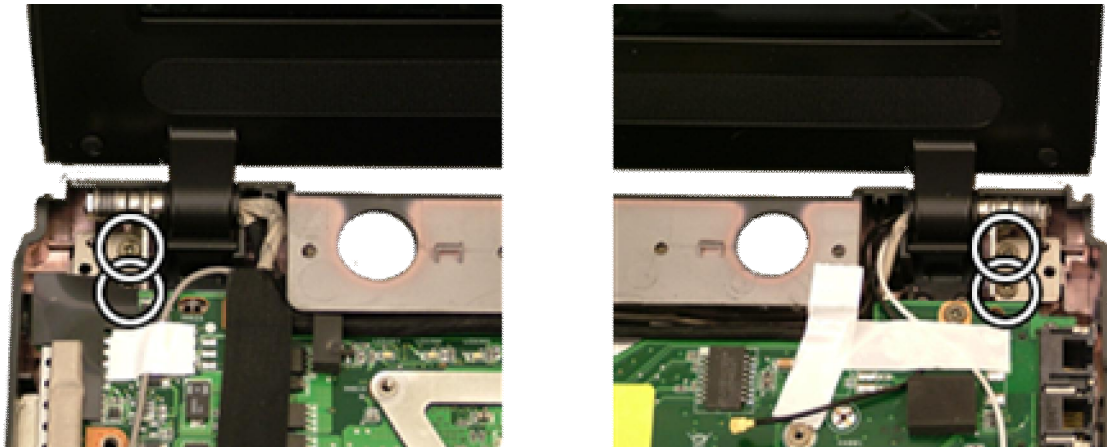
## LCD Assembly

1. Remove the top cover as described under 'Top Cover'.
2. Disconnect the Wireless LAN Adapter antennas and loosen the antennas from the tape holding it in place.



**Fig. 23** *The wireless LAN antenna.*

3. Disconnect and remove all remaining flat cables from the main board (all these cables can be slid out).
4. Remove the four screws in the hinges (two at each side).

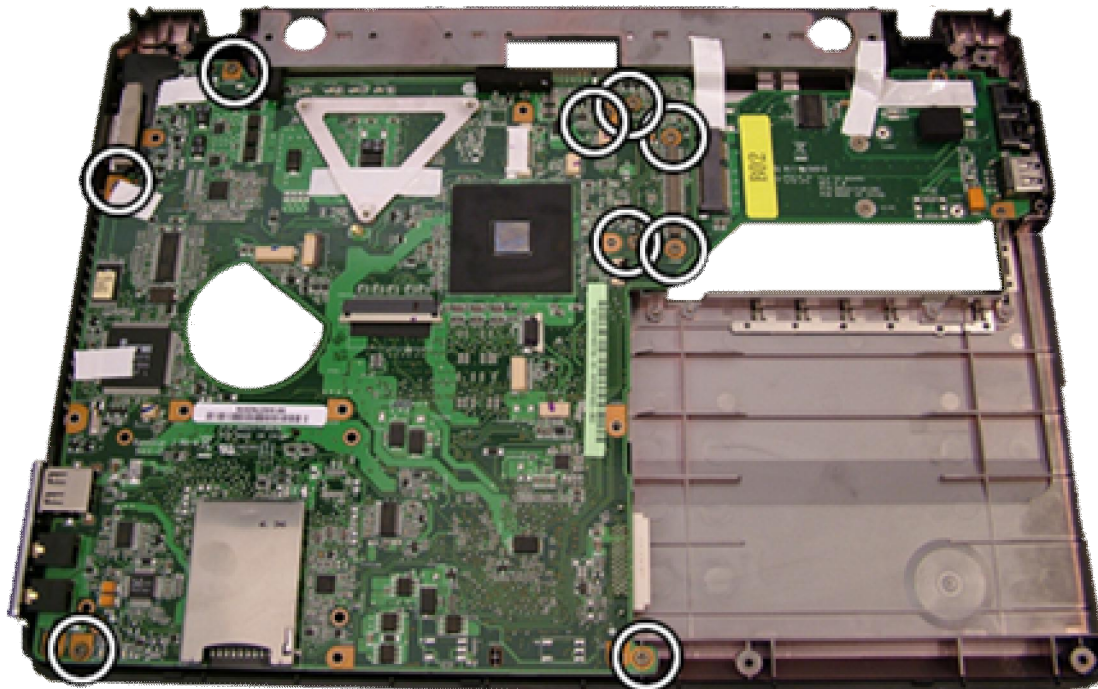


**Fig. 24** *The hinge screws.*

5. Lift out the LCD assembly.

## Main Board

1. Remove the CPU, memory and top cover as described under 'Top Cover'.
2. Remove the nine screws from the main board.



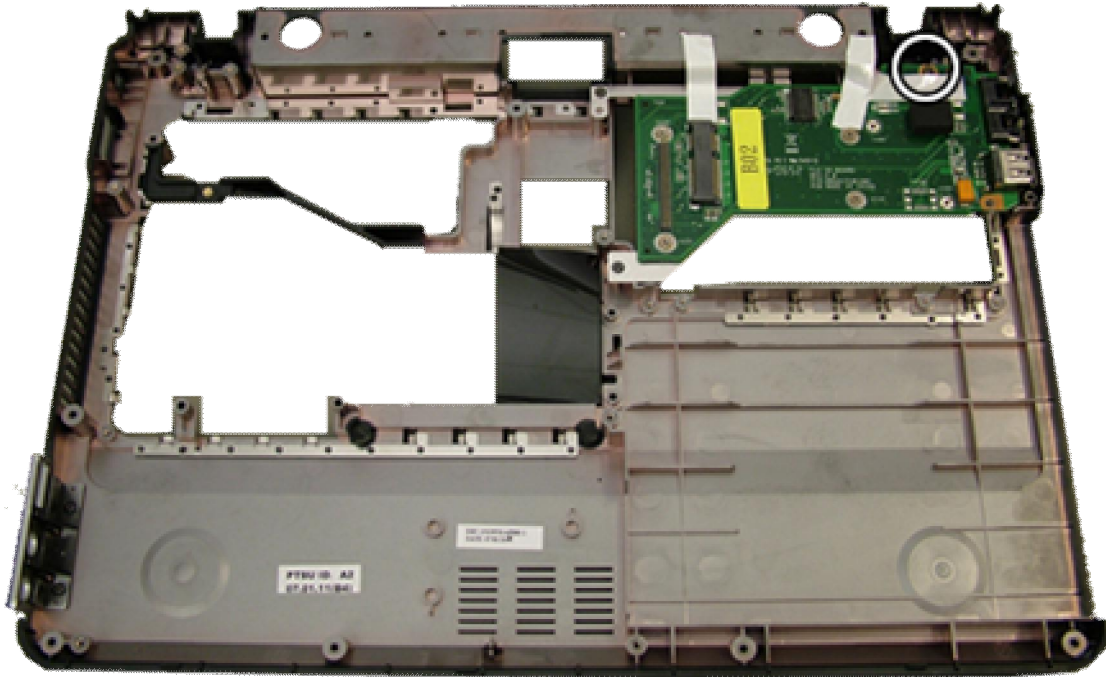
**Fig. 25** *The main board screws.*

3. Pull the connector between the I/O Board and the main board loose.
4. Lift the main board and slide it to the left to release the VGA port.
5. Lift out the main board.

## I/O Board

1. Remove the main board as described under 'Main Board'.

2. Remove the one screw holding the I/O board



**Fig. 26** *The I/O board screws.*

3. Lift out the I/O Board.

---

Note: During re-assembly, take care to align the main board and I/O board properly before pushing them back together (to avoid bending the pins of the connector).

---

## LCD Panel

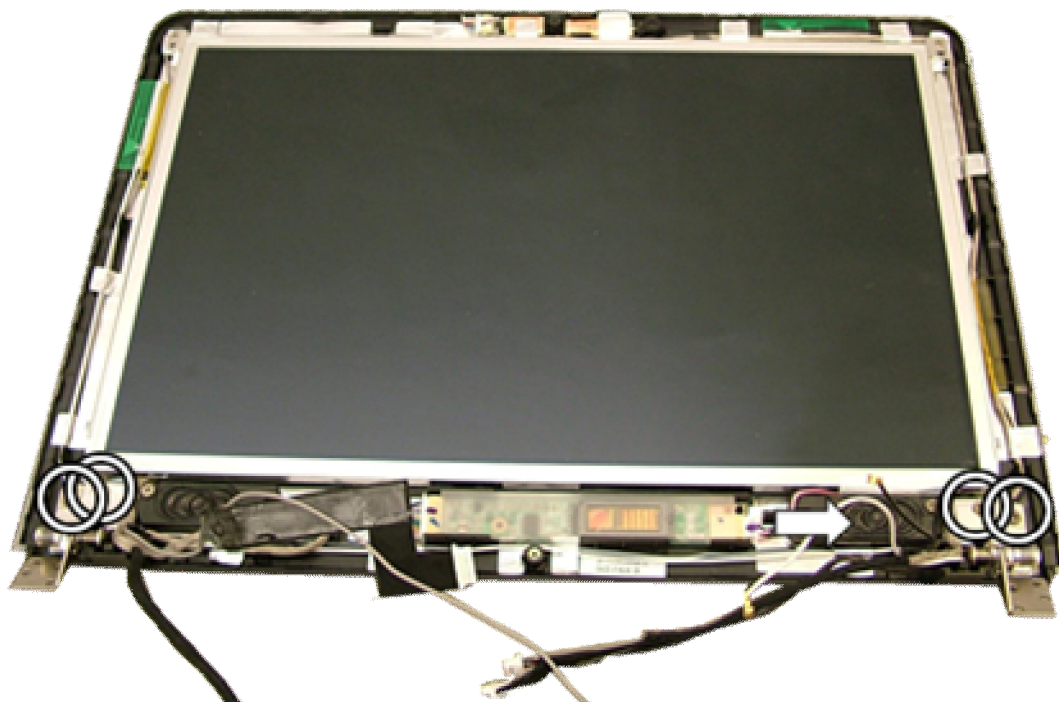
1. Remove the LCD Assembly as described under 'LCD Assembly'.
2. On the LCD assembly, remove five rubber stoppers.
3. Remove the five screws that were covered by the rubber stoppers.





**Fig. 27** *The LCD assembly.*

4. Remove the LCD bezel clicked in place. Note that the bezel may be glued on the top side (at the webcam and microphone). A bit of force may be needed to pull the bezel loose.
5. Disconnect the power cable from the inverter board.



**Fig. 28** *The inner works of the LCD assembly.*

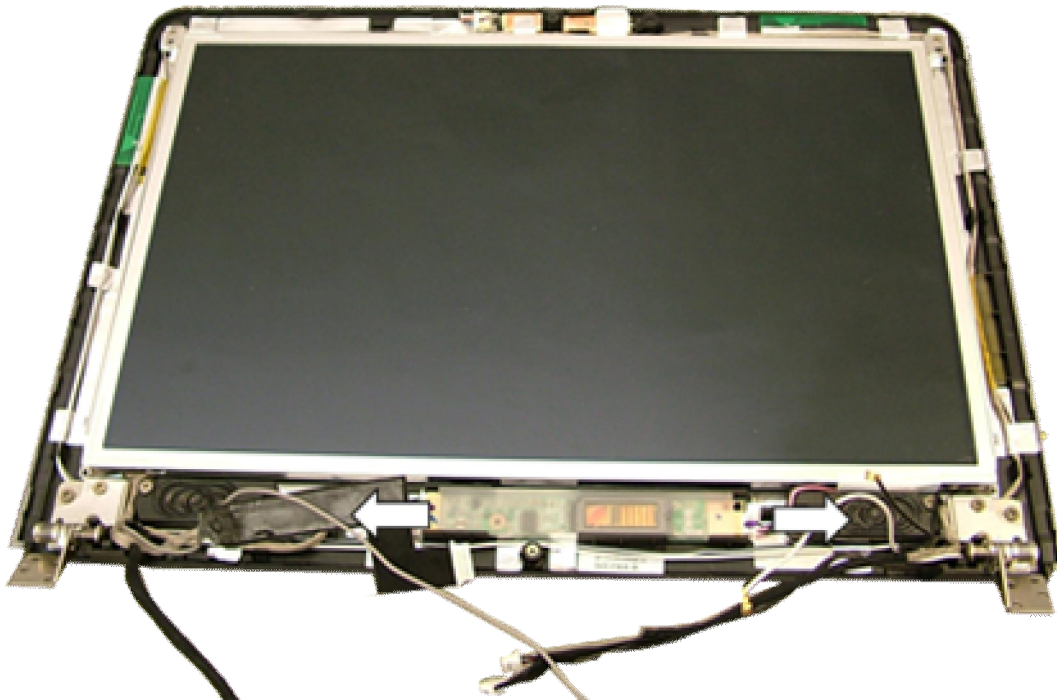
6. Remove the four screws from the hinges (two at each side).
7. Lift out the LCD panel.



8. Remove the metal brackets from the panel (two screws at each side).
9. Disconnect the LCD cable from the rear side of the panel.

## Inverter Board

1. Remove the LCD Assembly as described under 'LCD Assembly'.
2. On the LCD Assembly, remove five rubber stoppers (see Fig. 27).
3. Remove the five screws that were covered by the rubber stoppers.
4. Remove the LCD bezel clicked in place. Note that the bezel may be glued on the top side (at the webcam and microphone). A bit of force may be needed to pull the bezel loose.
5. Disconnect both cables from the inverter board.



**Fig. 29** *The inverter board.*

6. Pull out the inverter board; it is glued in place so some force may be needed to pull it out.

---

Note: After extracting the inverter board, ensure that the aluminium protective foil in the LCD housing is still good. Flatten the foil before putting the inverter board back!

---

## Speakers, Wireless LAN Antennas, Webcam and Microphone

These parts are all part of the LCD housing assembly and do not require further disassembly.

## Reassembly Notes

When reassembling the device, please take notice of the order in which the parts can be put back and reattached.

## Notice

The information in this guide is subject to change without notice.

This guide contains information protected by copyright. No part of this guide may be photocopied or reproduced in any form or by any means without prior written consent from Packard Bell B.V.

PACKARD BELL B.V. SHALL NOT BE LIABLE FOR TECHNICAL OR EDITORIAL ERRORS OR OMISSIONS CONTAINED HEREIN; NOR FOR INCIDENTAL OR CONSEQUENTIAL DAMAGES RESULTING FROM THE FURNISHING, PERFORMANCE, OR USE OF THIS MATERIAL.

Copyright © 2007 Packard Bell B.V. All rights reserved.

First Edition: May 2007  
Version: 1.0

Packard Bell B.V.