

Product System (PS)

Subject:	C5-501 Service Manual	Part No.:	99.K7001.000	Rev.:	0
		Doc. No.:	99.K7001.000-C5-501-001		
Project Code:	99.K7001.001	Component Part. No.:	NA	Page	1 of 32
Model Name:	DHR200	Marketing Description :			

R23 System Disassembly - Table of Contents

Chapter 1 : System disassembly	2
1.1.1 Battery Pack	3
1.1.2 Keyboard	4
1.1.3 CPU	6
1.1.4 HDD Module	8
1.1.5 DVD-ROM Drive	10
1.1.6 Wireless Card	11
1.1.7 DDR-SDRAM	12
1.1.8 LCD Assembly	13
1.1.9 LCD Panel	16
1.1.10 Inverter Board	18
1.1.11 Modem Card	19
1.1.12 System Board	20
1.1.13 Touch Pad	21
Chapter 2 : Fru. list	22
Chapter 3 : Screw torque list	31

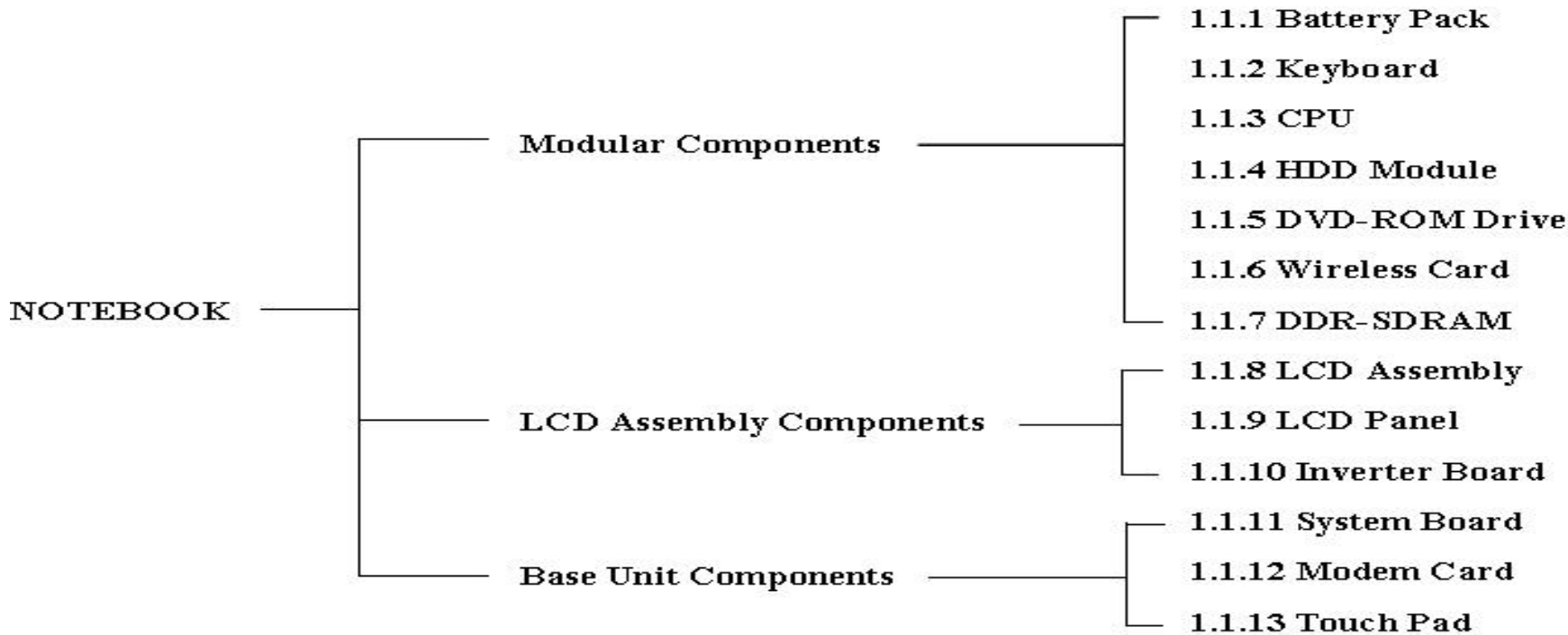
□ Product System (PS)

Subject:	C5-501 Service Manual	Part No.:	99.K7001.000	Rev.:	0
		Doc. No.:	99.K7001.000-C5-501-001		
Project Code:	99.K7001.001	Component Part. No.:	NA	Page	2 of 32
Model Name:	DHR200	Marketing Description :			

1.1 System Disassembly

The section discusses at length each major component for disassembly/reassembly and show corresponding illustrations. Use the chart below to determine the disassembly sequence for removing components from the notebook.

NOTE: Before you start to install/replace these modules, disconnect all peripheral devices and make sure the notebook is not turned on or connected to AC power



□ Product System (PS)

Subject:	C5-501 Service Manual	Part No.:	99.K7001.000	Rev.:	0
		Doc. No.:	99.K7001.000-C5-501-001		
Project Code:	99.K7001.001	Component Part. No.:	NA	Page	3 of 32
Model Name:	DHR200	Marketing Description :			

1.1.1 Battery Pack

Disassembly

1. Carefully put the notebook upside down.
2. Slide the two release lever outwards to the “unlock” position (1), while take the battery pack out of the compartment (2). (Figure 1-1)



Figure 1-1 Remove the battery pack

Reassembly

1. Replace the battery pack into the compartment. The battery pack should be correctly connected when you hear a clicking sound.
2. Slide the release lever to the “lock” position.

□ Product System (PS)

Subject:	C5-501 Service Manual	Part No.:	99.K7001.000	Rev.:	0
Project Code:	99.K7001.001	Doc. No.:	99.K7001.000-C5-501-001		
Model Name:	DHR200	Component Part. No.:	NA	Page 4 of 32	
		Marketing Description :			

1.1.2 Keyboard

Disassembly

1. Remove the battery pack. (Refer to section 1.1.1 Disassembly)
2. Push the keyboard cover to loose the locks from the battery compartment. (Figure 1-2)
3. Lift the keyboard cover up. (Figure 1-3)



Figure 1-2 Push the keyboard cover



Figure 1-3 Lift the keyboard cover

□ Product System (PS)

Subject:	C5-501 Service Manual	Part No.:	99.K7001.000	Rev.:	0
Project Code:	99.K7001.001	Doc. No.:	99.K7001.000-C5-501-001		
Model Name:	DHR200	Component Part. No.:	NA	Page 5 of 32	
		Marketing Description :			

4. Slightly lift up the keyboard. (Figure 1-4)

5. Disconnect the cable from the system board, then separate the keyboard. (Figure 1-5)



Figure 1-4 Lift the keyboard



Figure 1-5 Disconnect the cable

Reassembly

1. Reconnect the keyboard cable and fit the keyboard back into place.
2. Replace the keyboard cover.
3. Replace the battery pack. (Refer to section 1.1.1 Reassembly)

□ Product System (PS)

Subject:	C5-501 Service Manual	Part No.:	99.K7001.000	Rev.:	0
Project Code:	99.K7001.001	Doc. No.:	99.K7001.000-C5-501-001		
Model Name:	DHR200	Component Part. No.:	NA	Page 6 of 32	
		Marketing Description :			

1.1.3 CPU

Disassembly

1. Remove the battery pack. (Refer to section 1.1.1 Disassembly)
2. Remove six screws fastening the CPU cover. (Figure 1-6)
3. Remove four spring screws that secure the heatsink upon the CPU and disconnect the fan's power cord from system board. (Figure 1-7)



Figure 1-6 Remove six screws



Figure 1-7 Free the heatsink

□ Product System (PS)

Subject:	C5-501 Service Manual	Part No.:	99.K7001.000	Rev.:	0
		Doc. No.:	99.K7001.000-C5-501-001		
Project Code:	99.K7001.001	Component Part. No.:	NA	Page	7 of 32
Model Name:	DHR200	Marketing Description :			

4. To remove the existing CPU, lift the socket arm up to the vertical position. (Figure 1-8)

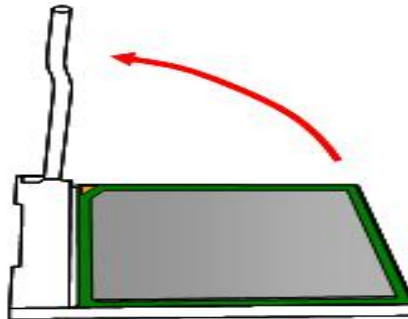


Figure 1-8 Remove the CPU

Reassembly

1. Carefully, align the arrowhead corner of the CPU with the beveled corner of the socket, then insert CPU pins into the holes. Place the lever back to the horizontal position and push the lever to the left.
2. Connect the fan's power cord to the system board, fit the heatsink upon the CPU and secure with four spring screws.
3. Replace the CPU cover and secure with six screws.
4. Replace the battery pack. (Refer to section 1.1.1 Reassembly)

□ Product System (PS)

Subject:	C5-501 Service Manual	Part No.:	99.K7001.000	Rev.:	0
Project Code:	99.K7001.001	Doc. No.:	99.K7001.000-C5-501-001		
Model Name:	DHR200	Component Part. No.:	NA	Page 8 of 32	
		Marketing Description :			

1.1.4 HDD Module

Disassembly

1. Carefully put the notebook upside down. Remove the battery pack. (Refer to section 1.1.1 Disassembly)
2. Remove two screws fastening the HDD compartment cover. (Figure 1-9)
3. Remove one screw and slide the HDD module out of the compartment. (Figure 1-10)



Figure 1-9 Remove the HDD compartment cover

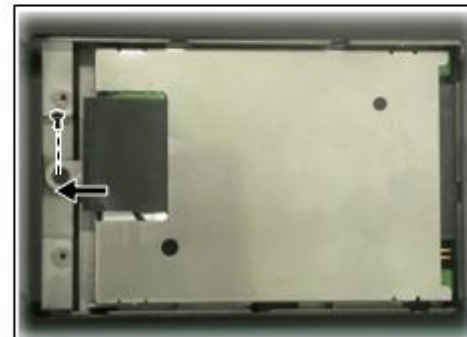


Figure 1-10 Remove HDD module

□ Product System (PS)

Subject:	C5-501 Service Manual	Part No.:	99.K7001.000	Rev.:	0
Project Code:	99.K7001.001	Doc. No.:	99.K7001.000-C5-501-001		
Model Name:	DHR200	Component Part. No.:	NA	Page 9 of 32	
		Marketing Description :			

4. Remove four screws to separate the hard disk drive from the bracket, remove the hard disk drive. (Figure 1-11)

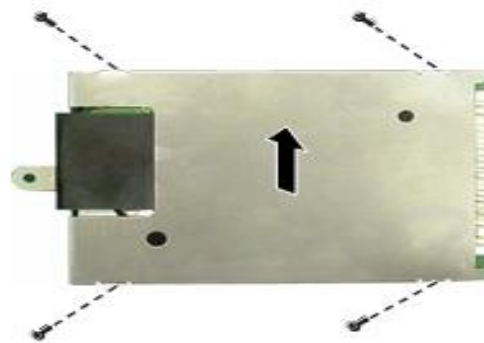


Figure 1-11 Remove hard disk drive

Reassembly

1. Attach the bracket to hard disk drive and secure with four screws.
2. Slide the HDD module into the compartment and secure with one screw.
3. Place the HDD compartment cover and secure with two screws.
4. Replace the battery pack. (Refer to section 1.1.1 Reassembly)

□ Product System (PS)

Subject:	C5-501 Service Manual	Part No.:	99.K7001.000	Rev.:	0
		Doc. No.:	99.K7001.000-C5-501-001		
Project Code:	99.K7001.001	Component Part. No.:	NA	Page	10 of 32
Model Name:	DHR200	Marketing Description :			

1.1.5 CD/DVD-ROM Drive

Disassembly

1. Carefully put the notebook upside down. Remove the battery pack (Refer to section 1.1.1 Disassembly)
2. Remove one screw fastening the CD/DVD-ROM drive. (Figure 1-12)
3. Insert a small rod, such as a straightened paper clip, into CD/DVD-ROM drive's manual eject hole (❶) and push firmly to release the tray. Then gently pull out the CD/DVD-ROM drive by holding the tray that pops out (❷). (Figure 1-12)



Figure 1-12 Remove the CD/DVD-ROM drive

Reassembly

1. Push the CD/DVD-ROM drive into the compartment and secure with one screw.
2. Replace the battery pack. (Refer to section 1.1.1 Reassembly)

□ Product System (PS)

Subject:	C5-501 Service Manual	Part No.:	99.K7001.000	Rev.:	0
Project Code:	99.K7001.001	Doc. No.:	99.K7001.000-C5-501-001		
Model Name:	DHR200	Component Part. No.:	NA	Page 11 of 32	
		Marketing Description :			

1.1.6 Wireless Card

Disassembly

1. Carefully put the notebook upside down. Remove the battery pack. (Refer to sections 1.1.1 Disassembly)
2. Remove six screws fastening the CPU cover. (Refer to step 2 of section 1.1.3 Disassembly)
3. Disconnect the wireless card's antennae first (❶). Then pull the retaining clips outwards (❷) and remove the wireless card (❸). (Figure 1-13)

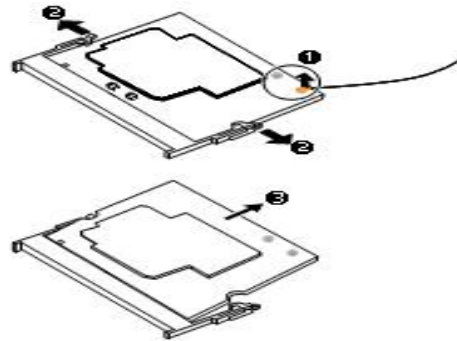


Figure 1-13 Remove the Wireless card

Reassembly

1. To install the wireless card, match the wireless card's notched part with the socket's projected part and firmly insert it into the socket. Then push down until the retaining clips lock the wireless card into position. Then sure that the antennae fully populated.
2. Replace the CPU cover and secure with six screws. (Refer to step 3 of section 2.2.3 Reassembly)
3. Replace the battery pack. (Refer to section 2.2.1 Reassembly)

□ Product System (PS)

Subject:	C5-501 Service Manual	Part No.:	99.K7001.000	Rev.:	0
		Doc. No.:	99.K7001.000-C5-501-001		
Project Code:	99.K7001.001	Component Part. No.:	NA	Page	12 of 32
Model Name:	DHR200	Marketing Description :			

1.1.7 DDR-SDRAM

Disassembly

1. Carefully put the notebook upside down. Remove the battery pack. (See section 1.1.1 Disassembly)
2. Remove six screws fastening the GPU cover. (Refer to step 2 of section 1.1.3 Disassembly)

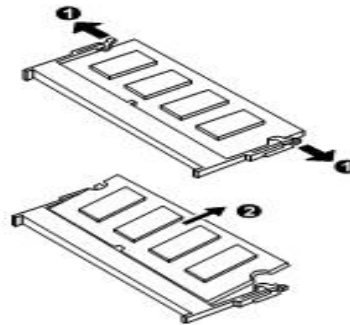


Figure 1-14 Remove the SO-DIMM

3. Pull the retaining clips outwards (❶) and remove the SO-DIMM (❷). (Figure 1-14)

Reassembly

1. To install the DDR, match the DDR's notched part with the socket's projected part and firmly insert the SO-DIMM into the socket at 20-degree angle. Then push down until the retaining clips lock the DDR into position.
2. Replace the GPU cover and secure with six screws. (Refer to step 3 of section 1.1.3 Reassembly)
3. Replace the battery pack. (See section 1.1.1 Reassembly)

□ Product System (PS)

Subject:	C5-501 Service Manual	Part No.:	99.K7001.000	Rev.:	0
Project Code:	99.K7001.001	Doc. No.:	99.K7001.000-C5-501-001		
Model Name:	DHR200	Component Part. No.:	NA	Page 13 of 32	
		Marketing Description :			

1.1.8 LCD ASSY

Disassembly

1. Remove the battery pack, keyboard, CPU, hard disk drive, CD/DVD-ROM drive, wireless card and DDR. (See sections 1.1.1, 1.1.2, 1.1.3, 1.1.4, 1.1.5, 1.1.6 and 1.1.7 Disassembly)
2. Remove two hinge covers. (Figure 1-15)
3. Disconnect three cables from the system board. (Figure 1-16)



Figure 1-15 Remove the hinge covers



Figure 1-16 Disconnect three cables

□ Product System (PS)

Subject:	C5-501 Service Manual	Part No.:	99.K7001.000	Rev.:	0
Project Code:	99.K7001.001	Doc. No.:	99.K7001.000-C5-501-001		
Model Name:	DHR200	Component Part. No.:	NA	Page 14 of 32	
		Marketing Description :			

4. Remove four screws and separate the antenna then free the LCD assembly. (Figure 1-17)



Figure 1-17 Free the LCD assembly

Reassembly

1. Attach the LCD assembly to the base unit and secure with four screws.
2. Replace the antenna wires.
3. Reconnect the three cables to the system board.
4. Replace the two hinge covers.
5. Replace the DDR, wireless card, CD/DVD-ROM drive, hard disk drive, CPU, keyboard and battery pack. (Refer to sections 1.1.7, 1.1.6, 1.1.5, 1.1.4, 1.1.3, 1.1.2 and 1.1.1 Reassembly)

□ Product System (PS)

Subject:	C5-501 Service Manual	Part No.:	99.K7001.000	Rev.:	0
		Doc. No.:	99.K7001.000-C5-501-001		
Project Code:	99.K7001.001	Component Part. No.:	NA	Page	15 of 32
Model Name:	DHR200	Marketing Description :			

1.1.9 LCD Panel

Disassembly

1. Remove the battery, keyboard, CPU, hard disk drive, CD/DVD-ROM drive, wireless card, DDR and LCD assembly. (Refer to section 1.1.1, 1.1.2, 1.1.3, 1.1.4, 1.1.5, 1.1.6, 1.1.7 and 1.1.8 Disassembly)
2. Remove two rubber pads and two screws on the corners of the panel. (Figure 1-18)
3. Insert a flat screwdriver to the lower part of the LCD cover and gently pry the frame out. Repeat the process until the cover is completely separated from the housing.
4. Remove six screws and disconnect the cable. (Figure 1-19)



Figure 1-18 Remove LCD cover



Figure 1-19 Remove six screws and disconnect the cable

□ Product System (PS)

Subject:	C5-501 Service Manual	Part No.:	99.K7001.000	Rev.:	0
Project Code:	99.K7001.001	Doc. No.:	99.K7001.000-C5-501-001		
Model Name:	DHR200	Component Part. No.:	NA	Page 16 of 32	
		Marketing Description :			

5. Remove four screws that secure the LCD brackets. (Figure 1-20)
6. Disconnect the cable to free the LCD panel. (Figure 1-21)



Figure 1-20 Remove four screws

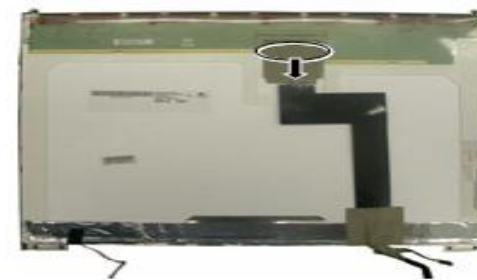


Figure 1-21 Free the LCD panel

Reassembly

1. Replace the cable to the LCD panel.
2. Attach the LCD panel's brackets back to LCD panel and secure with four screws.
3. Replace the LCD panel into LCD housing. And reconnect one cable to inverter board.
4. Fasten the LCD panel by six screws.
5. Fit the LCD cover and secure with two screws and rubber pads.
6. Replace the LCD assembly, DDR, wireless card, CD/DVD-ROM drive, hard disk drive, CPU, keyboard and battery pack (See sections 1.1.8, 1.1.7, 1.1.6, 1.1.5, 1.1.4, 1.1.3, 1.1.2 and 1.1.1 Reassembly)

□ Product System (PS)

Subject:	C5-501 Service Manual	Part No.:	99.K7001.000	Rev.:	0
		Doc. No.	99.K7001.000-C5-501-001		
Project Code:	99.K7001.001	Component Part. No.:	NA	Page	17 of 32
Model Name:	DHR200	Marketing Description :			

1.1.10 Inverter Board

Disassembly

1. Remove the battery, keyboard, CPU, hard disk drive, CD/DVD-ROM drive, wireless card, DDR and LCD assembly. (Refer to section 1.1.1, 1.1.2, 1.1.3, 1.1.4, 1.1.5, 1.1.6, 1.1.7 and 1.1.8 Disassembly)
2. Remove the LCD cover. (Refer to the steps 1-3 of section 1.1.9 Disassembly)
3. Remove two screws fastening the inverter board and disconnect two cables, then free the inverter board. (Figure 1-22)



Figure 1-22 Free the inverter board

Reassembly

1. Reconnect two cables. Fit the inverter board back into place and secure with two screws.
2. Replace the LCD cover. (Refer to section 1.1.9 Reassembly)
3. Replace the LCD assembly. (Refer to section 1.1.8 Reassembly)
4. Replace the DDR, wireless card, CD/DVD-ROM drive, hard disk drive, CPU, keyboard and battery pack. (Refer to sections 1.1.7, 1.1.6, 1.1.5, 1.1.4, 1.1.3, 1.1.2 and 1.1.1 Reassembly)

□ Product System (PS)

Subject:	C5-501 Service Manual	Part No.:	99.K7001.000	Rev.:	0
		Doc. No.:	99.K7001.000-C5-501-001		
Project Code:	99.K7001.001	Component Part. No.:	NA	Page	18 of 32
Model Name:	DHR200	Marketing Description :			

1.1.11 System Board

Disassembly

1. Remove the battery, keyboard, CPU, hard disk drive, CD/DVD-ROM drive, wireless card, DDR-SDRAM and modem card. (Refer to sections 1.1.1, 1.1.2, 1.1.3, 1.1.4, 1.1.5, 1.1.6, 1.1.7 and 1.1.11 Disassembly)
2. Disconnect touch pad's cables from the system board. (Figure 1-23)
3. Remove two screws fastening the housing. (Figure 1-24)

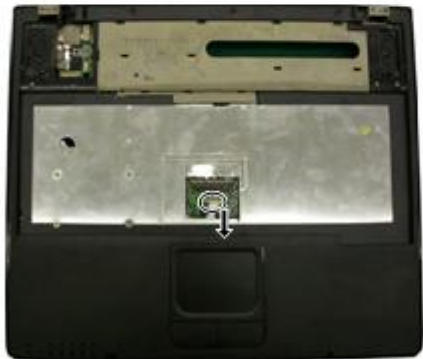


Figure 1-23 Disconnect touch pad's cable



Figure 1-24 Remove two screws

□ Product System (PS)

Subject:	C5-501 Service Manual	Part No.:	99.K7001.000	Rev.:	0
Project Code:	99.K7001.001	Doc. No.:	99.K7001.000-C5-501-001		
Model Name:	DHR200	Component Part. No.:	NA	Page 19 of 32	
		Marketing Description :			

4. Remove twenty-two screws, then free the housing. (Figure 1-25)
5. Disconnect the one cable from the system board, then remove the two screws and two hex nuts. And lift the system board from the top cover, free the system board. (Figure 1-26)

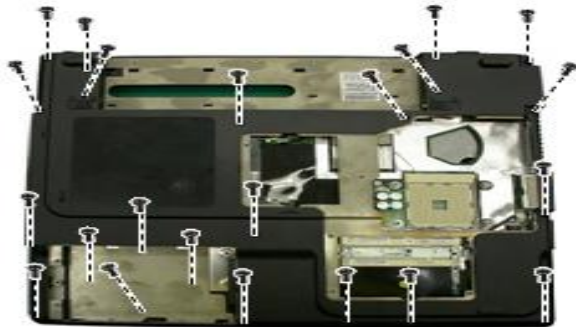


Figure 1-25 Free the housing

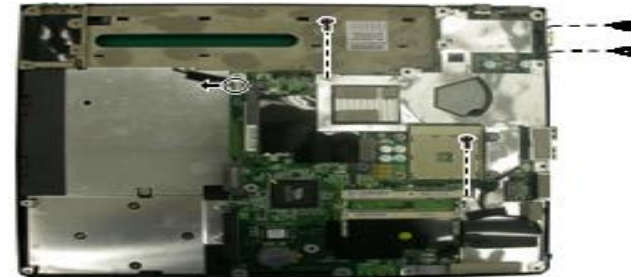


Figure 1-26 Free the system board

Reassembly

1. Replace the system board back into the top cover. Secure with two screws and two hex nuts.
2. Reconnect the L/R speakers' cables, touch pad's cable .
3. Replace the housing and secure with twenty-two screws.
4. Replace the modem card, DDR-SDRAM, wireless card, CD/DVD-ROM, hard disk drive, CPU, keyboard and battery pack. (Refer to previous section reassembly)

□ Product System (PS)

Subject:	C5-501 Service Manual	Part No.:	99.K7001.000	Rev.:	0
		Doc. No.:	99.K7001.000-C5-501-001		
Project Code:	99.K7001.001	Component Part. No.:	NA	Page	20 of 32
Model Name:	DHR200	Marketing Description :			

1.1.12 Modem Card

Disassembly

1. Remove the battery, keyboard, CPU, hard disk drive, CD/DVD-ROM drive, wireless card and DDR-SDRAM.
(Refer to sections 1.1.1, 1.1.2, 1.1.3, 1.1.4, 1.1.5, 1.1.6 and 1.1.7 Disassembly)
2. Remove the housing. (Refer to the steps 3 of section 1.1.11 Disassembly)
3. Disconnect the cable from the system board, then remove two screws fastening the modem card.
(Figure 1-27)

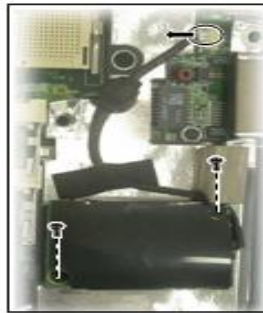


Figure 1-27 Free the modem card

Reassembly

1. Replace the modem card and secure with two screws.
2. Reconnect the cable.
3. Replace the housing. (Refer to the step 3 of section 1.1.11 Reassembly)
4. Replace the DDR-SDRAM, wireless card, CD/DVD-ROM, hard disk drive, CPU, keyboard and battery pack.
(Refer to previous section reassembly)

□ Product System (PS)

Subject:	C5-501 Service Manual	Part No.:	99.K7001.000	Rev.:	0
		Doc. No.	99.K7001.000-C5-501-001		
Project Code:	99.K7001.001	Component Part. No.:	NA	Page	21 of 32
Model Name:	DHR200	Marketing Description :			

1.1.13 Touch Pad

Disassembly

1. Remove the battery pack, keyboard, CPU, hard disk drive, CD/DVD-ROM drive, wireless card, DDR-SDRAM and LCD assembly. (See sections 1.1.1, 1.1.2, 1.1.3, 1.1.4, 1.1.5, 1.1.6, 1.1.7 and 1.1.8 Disassembly)
2. Remove two screws fastening the touch pad button. (Figure 1-28)
3. Remove thirteen screws and lift the shielding, then free the touch pad. (Figure 1-29)

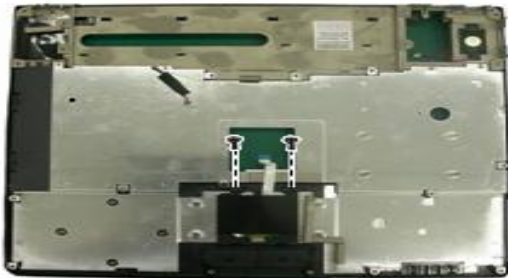


Figure 1-28 Remove two screws



Figure 1-29 Free the touch pad



Reassembly

1. Replace the touch pad, then fit the shielding and secure with thirteen screws.
2. Replace the touch pad button back into the top cover and secure with two screws.
3. Replace the battery pack, keyboard, CPU, hard disk drive, CD/DVD-ROM drive, wireless card, LCD assembly, the modem card and the system board. (See sections previous section reassembly)

☐ Product System (PS)

Subject:	C5-501 Service Manual	Part No.:	99.K7001.000	Rev.:	0
Project Code:	99.K7001.001	Doc. No.:	99.K7001.000-C5-501-001		
Model Name:	DHR200	Component Part. No.:	NA	Page	22 of 32
		Marketing Description :			

R23 Spare Parts FRU List

CATEGORY	Which Model can Use:	BenQ PN	BenQ Description	pix	MOQ
LCD	R31/R22E/5200G/R23	56.91K17.031	LCDM 15" XGA B150XG02 V4 AU RoHs		1
ODD	R23/A33/R31	56.35K49.001	DVD Dual KME UJ-840BMT2-A (G-baze) FW:1.00 RoHs		1
	R23	56.33K49.011	DVD/CD-RW COMBO KME UJDA-770-MTA Firmware: 1.00 (GBAS) RoHs		1
MAINBOARD	R23	54.K7001.001	Motherboard R23		1
BATTERY	R23	23.2K700.001	Battery Pana 2200mAH/cell RoHs		1
ADAPTER	R23	2E.16190.001	Adapter 65W 3-pin SADP65KB DBSF Delta		1
ELETRIC BASE UNIT	R23	5D.K4709.001	WLAN BD MIWLGRL		1
	R23	5D.K4704.001	Modem Board		1
	R23	6E.K7012.001	Thermal FAN Module R23		5

☐ Product System (PS)

Subject:	C5-501 Service Manual	Part No.:	99.K7001.000	Rev.:	0
		Doc. No.:	99.K7001.000-C5-501-001		
Project Code:	99.K7001.001	Component Part. No.:	NA	Page	23 of 32

Model Name: DHR200 Marketing Description :

	R23	5D.K6614.021	Touch Pad R23		5
	R23	2C.4K700.001	Speaker Module L DH2100		25
	R23	2C.4K700.011	Speaker Module R DH2100		25
	2100/R22/R23	54.K4710.001	Inverter Board DH2100		5
CABLE	R23	5K.K7003.001	Modem Board Cable R23		5
	R22/R23	CS.50K47.002	Wireless Antenna Cable R22		5
	R23	5K.K7001.001	LCM Cable R23		5
	R23	5K.K7002.001	Inverter Cable R23		5
	2100/R22/R23	50.K4705.001	Touchpad FFC DH2100		5
	R23	6E.K7004.001	Top Case without Touchpad Module R23		1

☐ Product System (PS)

Subject:	C5-501 Service Manual	Part No.:	99.K7001.000	Rev.:	0
Project Code:	99.K7001.001	Doc. No.:	99.K7001.000-C5-501-001		
Model Name:	DHR200	Component Part. No.:	NA	Page 24 of 32	
		Marketing Description :			

MECHANICAL	R23	3C.K7001.001	K/B Shieding Plate R23		5
	R23	6E.K7005.001	Bottom Case R23		1
PARTS	R23	4A.K7003.001	ODD Bezel COMBO Gbase		5
	R23	4A.K7002.001	ODD Bezel DVD DUAL Gbase		5
	R23	6E.K7006.001	LCD Cover without Logo		1
	R23	4K.7002.001	BenQ Logo		50
	R23	4A.K7001.001	LCD Bezel R23		1
	R23	6E.K7007.001	K/B Cover R23		5

☐ Product System (PS)




Subject:	C5-501 Service Manual	Part No.:	99.K7001.000	Rev.:	0
Project Code:	99.K7001.001	Doc. No.:	99.K7001.000-C5-501-001		
Model Name:	DHR200	Component Part. No.:	NA	Page 25 of 32	

Model Name: DHR200 Marketing Description :

	R23	6E.K7008.001	Touch pad R23		5
	R23	6E.K7013.001	Touch pad Botton mudule R23		5
	R23	6E.K7009.001	LCD Cover Latch knob& hook&spring R23		25
	2100/R22/A32/R31/R23	33.K4701.001	ODD Bracket (fix on bottom case)		5
	2100/R22/R23	33.K4705.001	LCD Bracket 15" L DH2100		5
	2100/R22/R23	33.K4706.001	LCD Bracket 15" R DH2100		5
	R23	6E.K7010.001	Hinge cover L+R		5
	R23	3C.K7002.001	Hinge 15" L DH2100		5
	R23	3C.K7003.001	Hinge 15" R DH2100		5

☐ Product System (PS)

Subject:	C5-501 Service Manual	Part No.:	99.K7001.000	Rev.:	0
Project Code:	99.K7001.001	Doc. No.:	99.K7001.000-C5-501-001		
Model Name:	DHR200	Component Part. No.:	NA	Page 26 of 32	
		Marketing Description :			

	R23	6E.K7011.001	HDD Case R23		5
	R23	4B.K7001.001	CPU Door Cover R23		5
	R23	4B.K7002.001	HDD Door Cover R23		5
SCREW	2100/A32/R22/R31/A33/R23	86.00378.3R0	Screw M2L3 black DH2100		100
	2100/A32/R22/R31/A33/R23	86.00376.6R0	Screw,M2.6L6 black DH2100		100
RUBBER/ MYLAR	2100/A32/R22/R31/A33/R23	86.00376.4R0	Screw M2.6L4 black DH2100		100
	2100/A32/R22/R31/A33/R23	86.00377.2R5	Screw M2L2.5 white DH2100		100
	R23	4G.K7001.001	Rubber on LCD Bezel black thin R23		100
	R23	4G.K7002.001	Rubber on LCD Bezel black circle R23		100
	R23	4K.K7001.001	Mylar black Screw on LCD Bezel R23		100
	2100/R22/R23	40.K4709.001	Insulator Inverter DH2100		100
	2100/R22/R31/R23	44.K4701.001	Inner Carton with handle		20

□ Product System (PS)

Subject:	C5-501 Service Manual	Part No.:	99.K7001.000	Rev.:	0
Project Code:	99.K7001.001	Doc. No.:	99.K7001.000-C5-501-001		
Model Name:	DHR200	Component Part. No.:	NA	Page 27 of 32	
		Marketing Description :			

PACKING	2100/R22/R31/R23	44.K4702.001	Brown Carton		20	
	2100/R22/R31/R23	44.K4703.001	Accessory Pizza Box without Partition		20	
	2100/R22/R31/R23	44.K4704.001	Partition in Pizza Box		20	
	2100/R22/R23	47.K4701.001	Cushion		20	
LABEL ON Machine	2100/R22/R31/A33/R23	42.K4702.001	Machine Plastic Bag DH2100		100	
	2100/R22/R31/R23	47.K4702.001	Keyboard Protected (Place: Between Keyboard and Panel) DH2100		100	
	R23	4E.K7001.001	LABEL RATING SAFETY W/DGT R23/R23E GP		100	
	R22/A32/R23	45.K4707.OA1	LABEL Modem MII CHINA R23		100	
	R22/A32/R23	45.K4708.OA1	LABEL Modem SIRIM Mylaysia R23		100	
	6000/7000/2100/A32/R22/S72/R31/A33/R23	45.K0804.001	SCREW HOLE SEAL LABEL BLACK		100	
	R23	4E.K7003.001	Carton Product Picture Label R23 GP		100	
	R23	4E.K7002.001	Content label Pizza box R23 GP		100	
				COUNTRY AND LANGUAGE RELATED FRU		
	KEYBOARD	R31/R23	56.24K64.TC1	Keyboard Taiwan TC R31		10
R31/R23		56.24K64.SC1	Keyboard PRC / SC R31	10		
R31/R23		56.24K64.US1	Keyboard SG/MY/EN/AU/NZ/HK R31	10		
R31/R23		56.24K64.TI1	Keyboard Thailand / Thai R31	10		
R31/R23		56.24K64.GR1	Keyboard Germany / German R31	10		
R31/R23		56.24K64.IT1	Keyboard Italy / Italian R31	10		

Product System (PS)

Subject:	C5-501 Service Manual	Part No.:	99.K7001.000	Rev.:	0
		Doc. No.:	99.K7001.000-C5-501-001		
Project Code:	99.K7001.001	Component Part. No.:	NA	Page 28 of 32	
Model Name:	DHR200	Marketing Description :			

	R31/R23	56.24K64.UK1	Keyboard UK / English R31	10
	R31/R23	56.24K64.SP1	Keyboard Spain / Spanish R31	10
	R31/R23	56.24K64.UI1	Keyboard International English/ Netherlands / Dutch /Pan Europe R31	10
	R31/R23	56.24K64.AR1	Keyboard Mid-East / Arabic R31	10
	R31/R23	56.24K64.TR1	Keyboard Turkish R31	10
	R31/R23	56.24K64.SW1	Keyboard Swiss R31	10
	R31/R23	56.24K64.RU1	Keyboard Russian New R31	10
	R31/R23	56.24K64.BE1	Keyboard Belgian R31	10
User Manual KIT	R23	6E.K7003.T01	R23 TC Manual Kit	10
	R23	6E.K7003.K01	R23 HK Manual Kit	10
	R23	6E.K7003.C01	R23 SC Manual Kit	10
	R23	6E.K7003.E01	R23 EN Manual Kit (SG/MY/VN/IN)	10
	R23	6E.K7003.M01	R23 TH Manual Kit	10
	R23	6E.K7003.V01	R23 AU/ZN Manual Kit	10
	R23	6E.K7003.A01	R23 ME/KSA/UAE Manual Kit	10
	R23	6E.K7003.N01	R23 TR Manual Kit	10
	R23	6E.K7003.G01	R23 GR Manual Kit	10

☐ Product System (PS)

Subject:	C5-501 Service Manual	Part No.:	99.K7001.000	Rev.:	0
		Doc. No.:	99.K7001.000-C5-501-001		
Project Code:	99.K7001.001	Component Part. No.:	NA	Page	29 of 32
Model Name:	DHR200	Marketing Description :			

	R23	6E.K7003.Y01	R23 IT Manual Kit		10
	R23	6E.K7003.S01	R23 SP/Mexico Manual Kit		10
	R23	6E.K7003.D01	R23 NL/Pan Europe Manual Kit		10
	R23	6E.K7003.Q01	R23 Switzerland Manual Kit		10
	R23	6E.K7003.U01	R23 UK Manual Kit		10
	R23	6E.K7003.R01	R23 Russia Manual Kit		10
MS CD KIT XPH	R23	6E.K7001.T01	OS KIT TC XPH SP2 A33		10
	R23	6E.K7001.C01	OS KIT SC XPH SP2 A33		10
	R23	6E.K7001.K01	OS KIT HK XPH SP2 A33		10
	R23	6E.K7001.E01	OS KIT TH/AU/NZ/SG/MY/UK/Pan Europe XPH SP2 A33		10
	R23	6E.K7001.G01	OS KIT GE XPH SP2 A33		10
	R23	6E.K7001.Y01	OS KIT Italy / Italian XPH SP2 A33		10
	R23	6E.K7001.S01	OS KIT Spain / Spanish XPH SP2 A33		10
	R23	6E.K7001.D01	OS KIT Dutch 3in1 XPH SP2 A33		10
	R23	6E.K7001.A01	OS KIT Mid-East / Arabic XPH SP2 A33		10
	R23	6E.K7001.N01	OS KIT Turkish XPH SP2 A33		10
	R23	6E.K7001.Q01	OS KIT Switzerland XPH SP2 A33		10
	R23	6E.K7001.R01	OS KIT Russian XPH SP2 A33		10
MS CD KIT	R23	6E.K7002.T01	OS KIT TC XPP SP2 A33		10

Product System (PS)

Subject:	C5-501 Service Manual	Part No.:	99.K7001.000	Rev.:	0
		Doc. No.:	99.K7001.000-C5-501-001		
Project Code:	99.K7001.001	Component Part. No.:	NA	Page	30 of 32
Model Name:	DHR200	Marketing Description :			

XPP	R23	6E.K7002.C01	OS KIT SC XPP SP2 A33	10
	R23	6E.K7002.K01	OS KIT HK XPP SP2 A33	10
	R23	6E.K7002.E01	OS KIT TH/AU/NZ/SG/MY/UK/Pan Europe XPP SP2 A33	10
	R23	6E.K7002.G01	OS KIT GE XPP SP2 A33	10
	R23	6E.K7002.Y01	OS KIT Italy / Italian XPP SP2 A33	10
	R23	6E.K7002.S01	OS KIT Spain / Spanish XPP SP2 A33	10
	R23	6E.K7002.D01	OS KIT Dutch 3in1 XPP SP2 A33	10
	R23	6E.K7002.A01	OS KIT Mid-East / Arabic XPP SP2 A33	10
	R23	6E.K7002.N01	OS KIT Turkish XPP SP2 A33	10
	R23	6E.K7002.Q01	OS KIT Switzerland XPP SP2 A33	10
	R23	6E.K7002.R01	OS KIT Russian XPP SP2 R31	10

□ Product System (PS)

Subject:	C5-501 Service Manual	Part No.:	99.K7001.000	Rev.:	0
Project Code:	99.K7001.001	Doc. No.:	99.K7001.000-C5-501-001		
Model Name:	DHR200	Component Part. No.:	NA	Page	31 of 32
		Marketing Description :			

R23 SCREW TORQUE LIST

Item	Screw P/N	Spec	Color	Assembly Location	Torque (Kgf. cm)	Quantity	Remark
1	371102010252	M2L2.5	Ni-White	LCD bracket&LCD panel	1.0~1.5	4	LCD assembly
	371102010252	M2L2.5	Ni-White	LCD housing&LCD bracket	1.0~1.5	2	
2	370102610405	M2.6L4	Ni-White	LCD bracket 顶端&LCD housing	2.0~3.0	2	
3	370102610603	M2.6L6	Zn-Black	LCD bracket&Hinge&LCD housing	3.3~3.8	4	
	370102610603	M2.6L6	Zn-Black	LCD cover&Hinge&LCD housing	3.3~3.8	2	
4	370102030301	M2L3	Zn-Black	Inverter BD&LCD housing;	1.0~1.5	2	
	370102030301	M2L3	Zn-Black	Antenna&LCD housing	1.0~1.5	2	
5	371102010252	M2L2.5	Ni-White	Top shielding&Top cover	1.0~1.5	6	Housing kit assembly
	371102010252	M2L2.5	Ni-White	hdd 槽内固定底座	1.5~2.0	4	
6	370102610303	M2.6L3	Ni-White	Top shielding&镁铝件	2.0~2.5	5	
7	370102610405	M2.6L4	Ni-White	MB&Top cover	2.0~3.0	2	
8	370102010407	M2L4	Zn-Black	Speaker&镁铝件	1.0~1.5	4	
9	370103010405	M3L4	Ni-White	HDD shielding&HDD	2.0~2.5	4	
10	370102010204	M2L2	Ni-White	ODD bracket&ODD	1.0~1.5	2	

□ Product System (PS)

Subject:	C5-501 Service Manual	Part No.:	99.K7001.000	Rev.:	0
Project Code:	99.K7001.001	Doc. No.:	99.K7001.000-C5-501-001		
Model Name:	DHR200	Component Part. No.:	NA	Page 32 of 32	
		Marketing Description :			

11	370102030301	M2L3	Zn-Black	Top shielding&Top cover	1.0~1.5	2
12	370102610603	M2.6L6	Zn-Black	鎖附 hinge&镁铝件	3.5~4.0	4
	370102610603	M2.6L6	Zn-Black	固定底座	2.5~3.0	19
13	370102610401	M2.6L4	Zn-Black	固定底座后侧面和镁铝件	2.5~3.0	2
	370102610401	M2.6L4	Zn-Black	固定 HDD shielding&底座	2.5~3.0	1
14	371102030305	M2L3	Zn-Black	CPU cover&底座	1.5~2.0	6
	371102030305	M2L3	Zn-Black	HDD cover&底座	1.5~2.0	2
	371102030305	M2L3	Zn-Black	Touch pad button&Top cover	1.5~2.0	2
	371102030305	M2L3	Zn-Black	Modem card&MB	1.5~2.0	2
15	342665500010	#4-40H4.8	Ni-White	VGA connector&镁铝件	1.5~2.0	2
16	341677000002	SPRING SCREW	Ni-White	固定 HEATSINK	2.5~3.0	4