

Disassembly Procedure

Please follow the information provided in this section to perform the complete disassembly procedure of the notebook. Be sure to use proper tools described before.

S97V/Z97V

Notebook consists of various modules. This chapter describes the procedures for the complete notebook disassembly. In addition, in between procedures, the detailed disassembly procedure of individual modules will be provided for your service needs.

The disassembly procedure consists of the following steps:

- Battery Module
- CPU Module
- VGA Module
- Memory Module
- WLAN Module
- TV Tuner
- HDD Module
- Optical Drive Module
- Keyboard Module
- Bottom Case Module
- Motherboard Module
- Top Case Module
- LCD Module

BATTERY

Battery Module

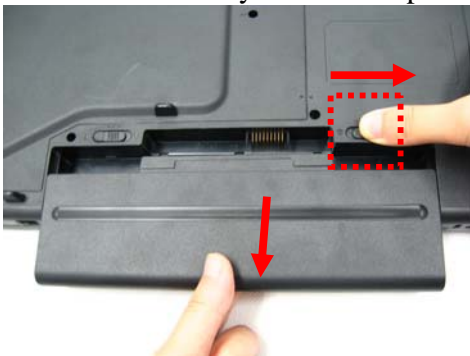
The illustration below shows how to remove the battery module.

Remove Battery module

1. Slide the battery latch 1 to open battery lock



2. Slide the battery latch 2 and pull the whole battery out.



CPU MODULE
REMOVAL

CPU Module

The illustrations below show how to remove the CPU module from the notebook.

Removing CPU module

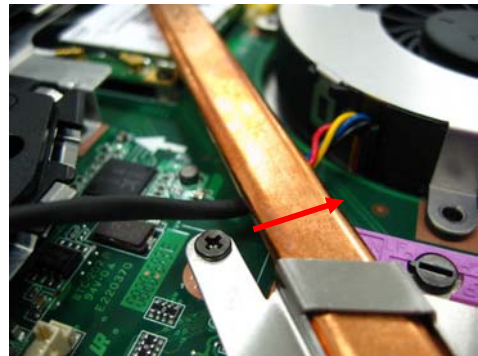
1. Remove 3 screws (M2*6L) on CPU door and take the card reader away.



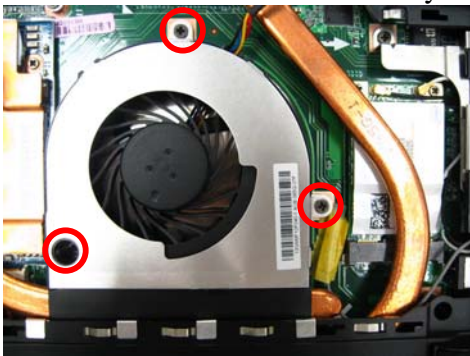
2. Remove CPU door.



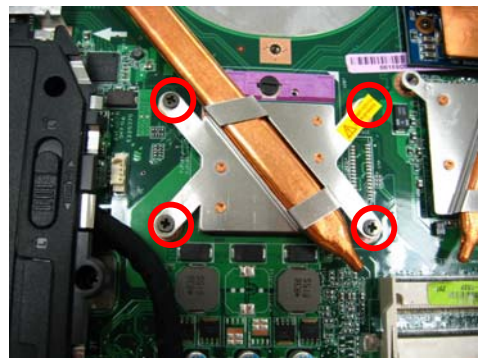
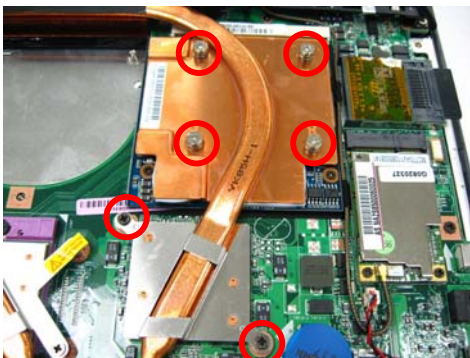
2. Disconnect the CPU fan cable and then thread the cable out as the arrow showed..



2. Remove 3 screws and take away the CPU fan from the system.



3. Remove 10 screws.



4. Take away the heat sink module.



5. Turn the non-removable screw here 180 degrees counter-clockwise to loosen the CPU.



6. Squeeze the vacuum handling pump on the CPU and use it to lift the CPU away.



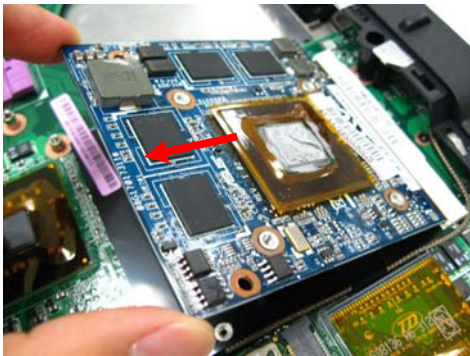
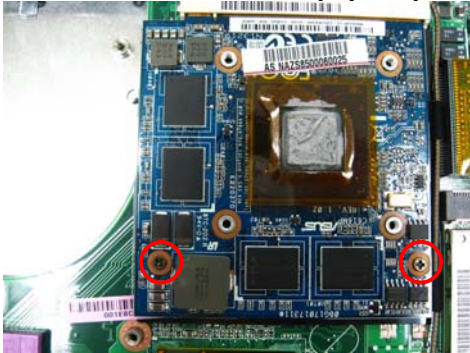
VGA Module

The illustration shows how to remove the VGA module form the notebook.

Removing VGA module

VGA
REMOVAL

1. Remove 2 screws to pop it up at 30 degree angles and then remove the VGA module.



Memory Module

The illustration shows how to remove the memory module from the notebook.

Removing Memory module

1. Pull two latches here to pop the Memory module up at 45° angles, and then pull out the module at that angle.



WLAN Module

The illustration below shows how to remove the WLAN module from the notebook.

Remove WLAN module

1. Disconnect the 2 antennas here and then remove two screws to pop it up at 45 degree angles and then pull it out at that angle.



WLAN
MODULE

WLAN
MODULE
REMOVAL

TV TUNER
MODULE

TV TUNER
MODULE
REMOVAL

TV Tuner Module

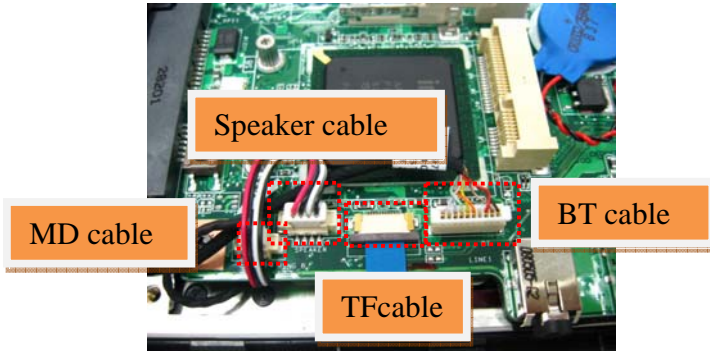
The illustrations below show how to remove the TV Tuner module from the notebook.

Removing HDD Module

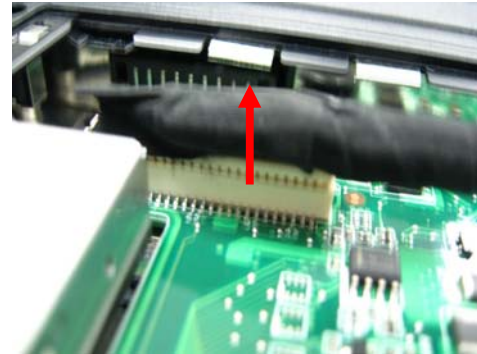
1. Remove 2 screws and take away TV Tuner.



2. Disconnect the following cables (modem cable、speaker cable、touchpad-fingerprint cable、Bluetooth cable) with motherboard.



3. Remove 1 screw and disconnect USB board cable with motherboard.



HDD
MODULE

HDD
MODULE
REMOVAL

HDD Module

The illustrations below show how to remove the HDD module from the notebook.

Removing HDD Module

1. Remove 2 screws here.



Disassembly procedure

2. Pull the hard disk module toward the direction of the arrow and then lift it up and take it out.



3. Remove 4 screws to separate HDD from HDD housing.



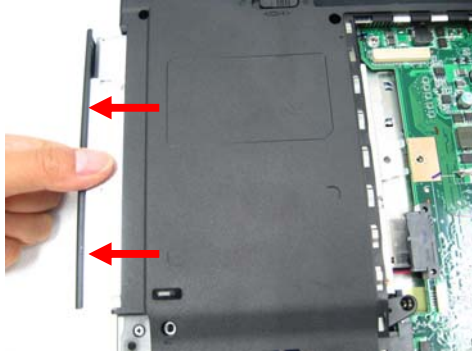
4. Remove 2 screws to separate HDD bracket from HDD bezel.



OPTICAL
DRIVE
REMOVAL

Optical Drive Module

1. Push the ODD module softly and slowly pull the ODD module out.



KEYBOARD

Keyboard Module

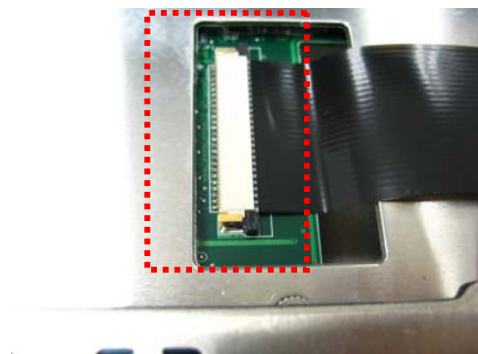
The illustrations below show how to remove the keyboard.

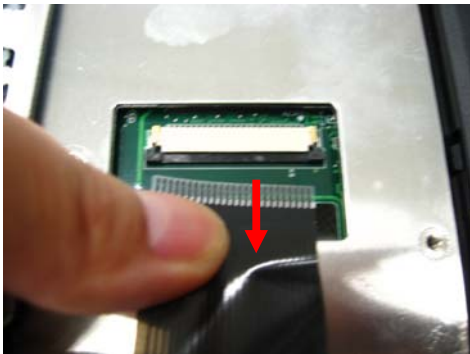
Removing Keyboard

1. Open 4 latches (Esc, F5, F10 and Pause) on keyboard module.



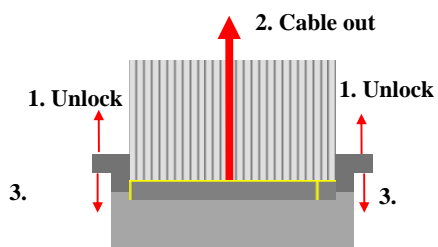
2. Turn over the keyboard plate and disconnect the keyboard FPC, and then remove the keyboard plate.





Removing Keyboard Cable

1. Use a flexible connector tool to unlock the cable connector on both ends (no. 1).
2. Carefully pull out the keyboard cable (no. 2) with a pair of tweezers.
3. Lock the connector (no. 3) again to avoid possible breakage.



Bottom Case Module

The illustrations below show how to disassemble and remove the bottom case module of the notebook. The module contains the bottom case itself.

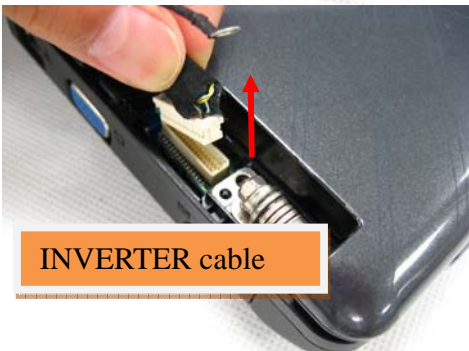
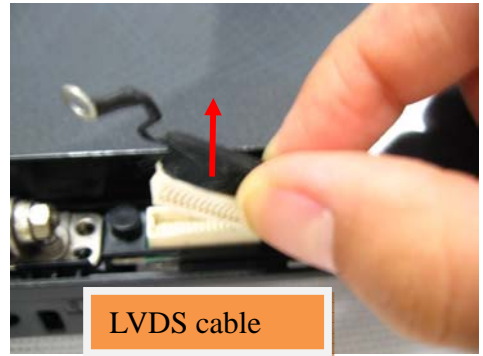
1. Dismount hinge covers and take it away.



2. Remove 2 screws.



3. Put the WLAN antennas through the hole of bottom case and disconnect the two cables here.

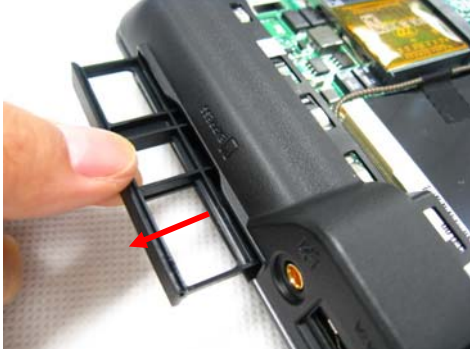


4. Remove 4 screws here on bottom case fastening hinges.



Disassembly procedure

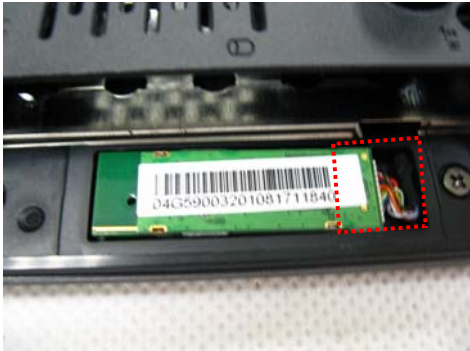
5. Remove dummy card and separate LCD module from the bottom case orderly.



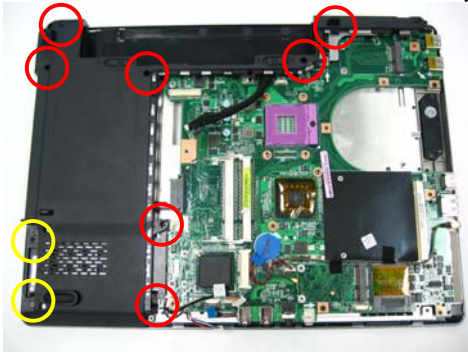
6. Remove 4 screws and take away the left bottom case.



7. Disconnect Bluetooth cable and take it away by hand.



8. Unscrew 9 screws and take away the right bottom case.



MOTHERBOARD
MODULE

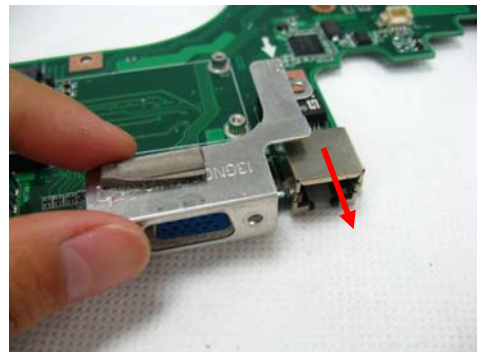
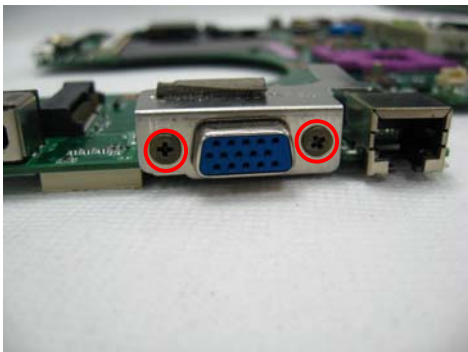
Motherboard module

The illustrations below show how to disassemble and remove the Motherboard module

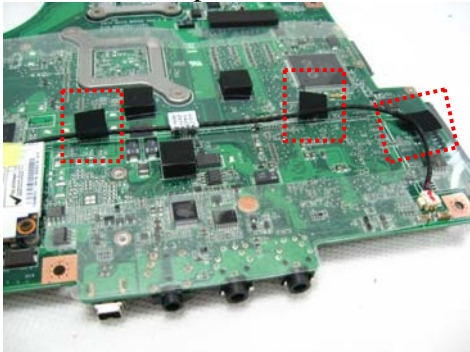
1. Remove 4 screws and remove motherboard.



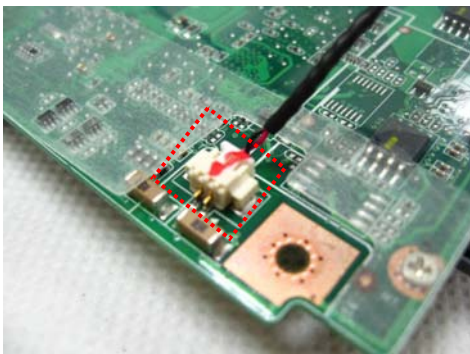
2. Remove 2 screws and remove the IO bracket.



3. Tear off 3 tapes.



4. Disconnect modem cable with motherboard.



5. Remove 2 screws and take it away.

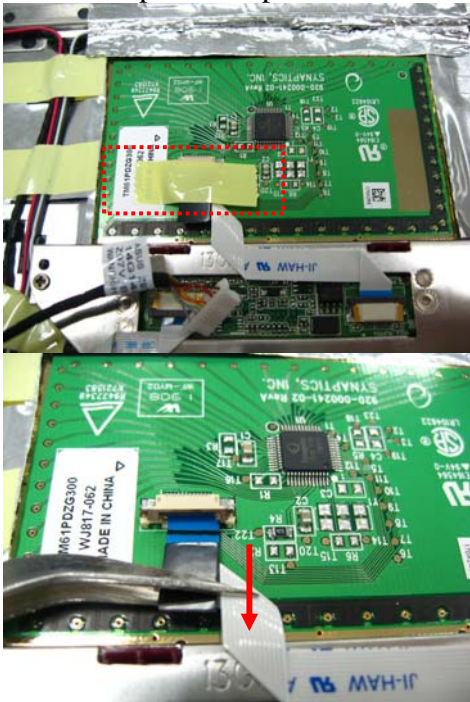


Top Case Module

The illustrations below show how to disassemble and remove the top case module of the notebook. The module contains the top case itself.

Removing Top Case Module

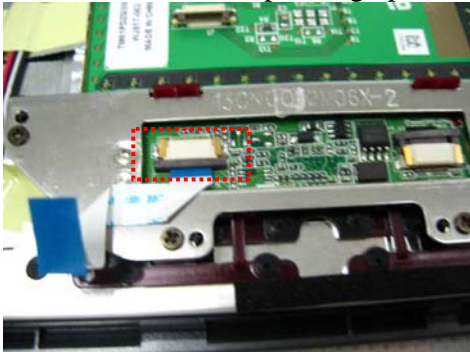
1. Tear 1 piece of tape here and disconnect touchpad-fingerprint cable with touchpad.



2. Disconnect touchpad-fingerprint cable with fingerprint board.



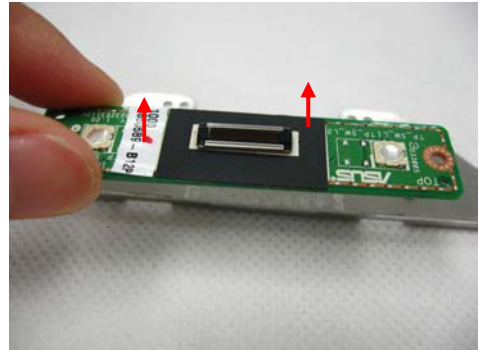
3. Disconnect touchpad-fingerprint-motherboard cable with fingerprint board.



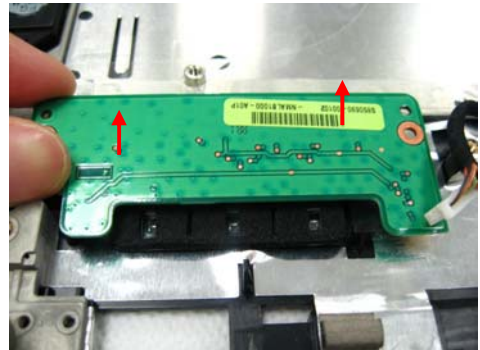
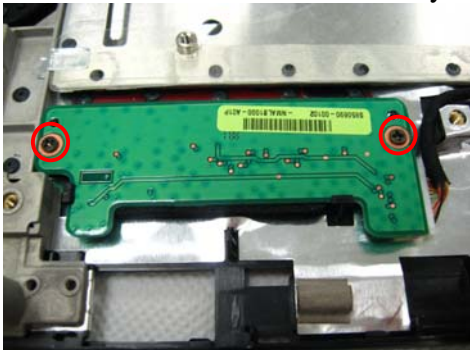
4. Remove 4 screws on fingerprint module and remove it.



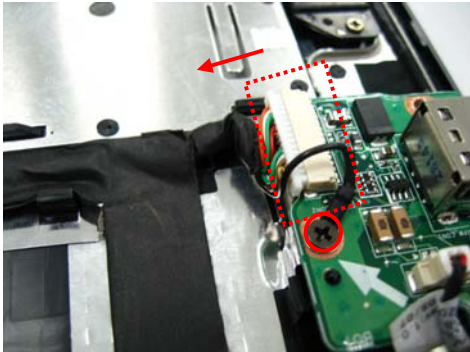
5. Remove 2 screws on fingerprint board and separate it with its bracket.



6. Remove 2 screws and take away the Launch board.



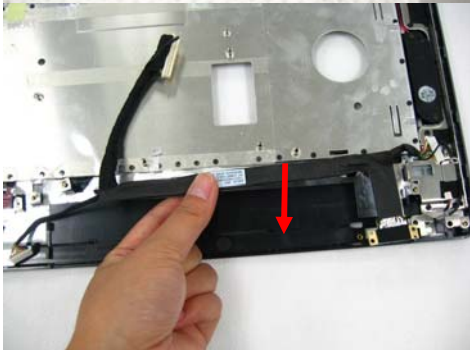
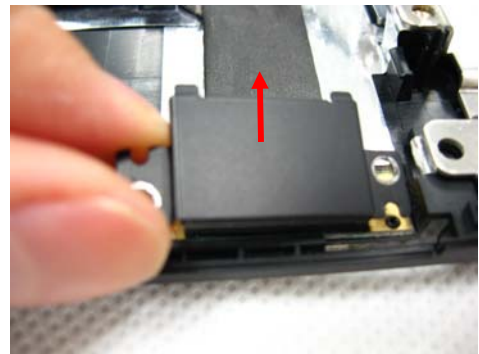
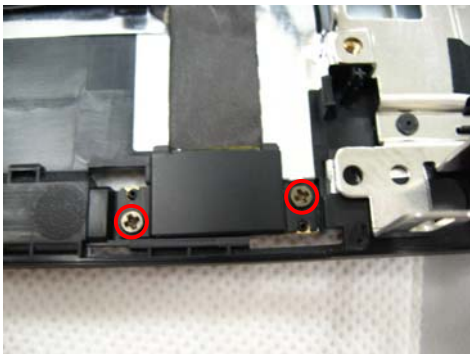
7. Remove 1 screw and disconnect the USB board-Launch board cable..



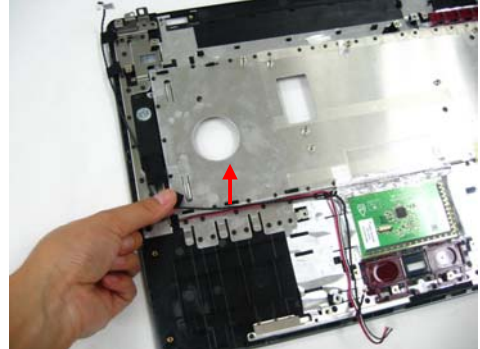
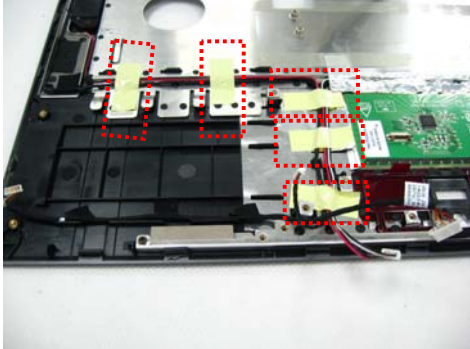
8. Disconnect USB board-motherboard cable with USB board, then take it away.



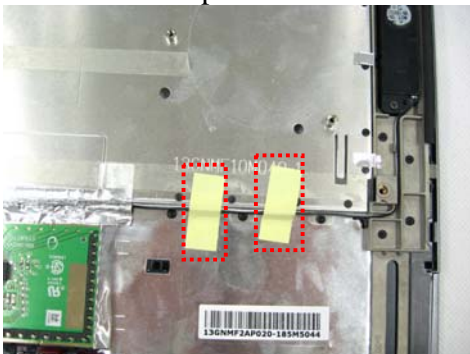
9. Remove 2 screws and take away the cover, then remove the USB board-Launch board cable.



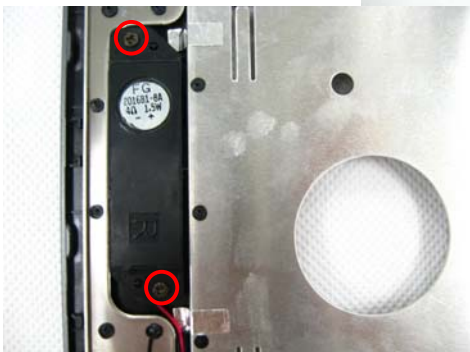
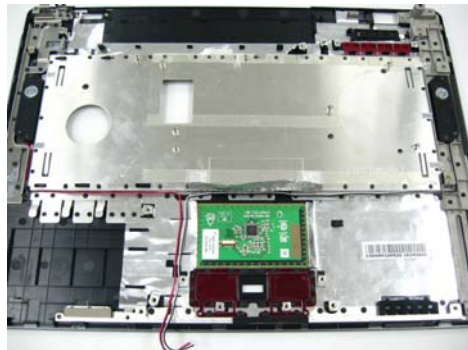
10. Tear off 5 tapes and remove the USB board-motherboard cable.



11. Tear off 2 tapes.



12. Remove 4 screws.



13. Remove the 2 speakers.



LCD MODULE

LCD Module

The illustrations below show how to remove and disassemble the LCD module. The module contains LCD panel, Inverter board, LCD bezel, LCD back cover.

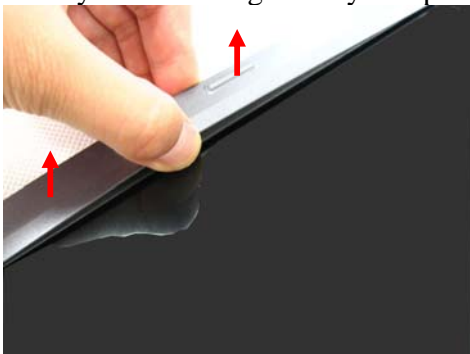
LCD MODULE
DISASSEMBLY

Disassembling LCD Module

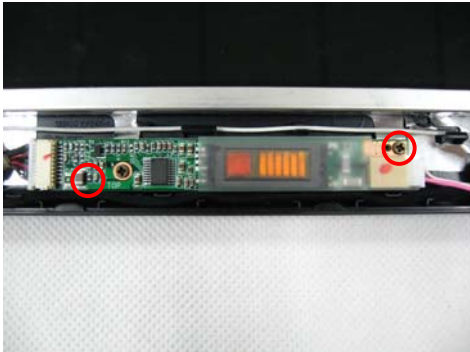
1. Remove 6 rubber pads and 6 screws on LCD front bezel.



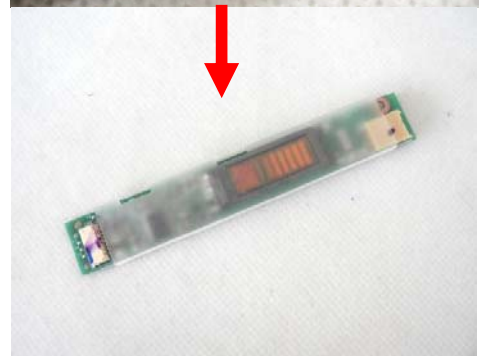
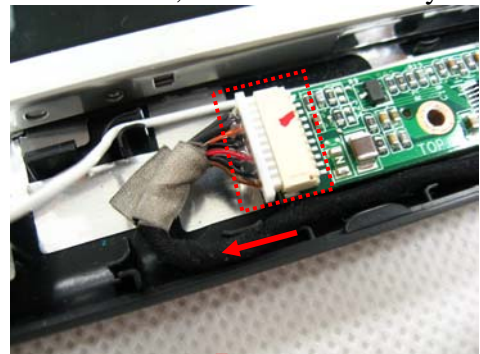
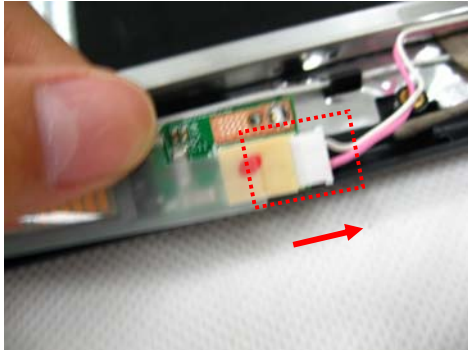
2. Pry the inside edges softly to separate LCD front bezel from LCD panel and take it away.



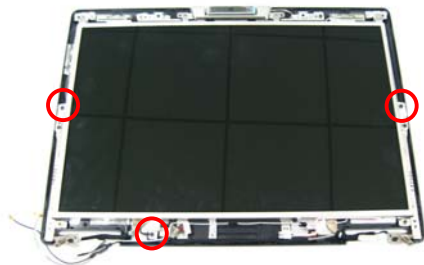
3. Remove 2 screws here.



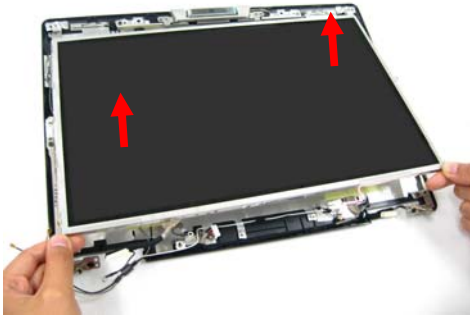
4. Disconnect the LCD cable and inverter cable from inverter board, and then take it away.



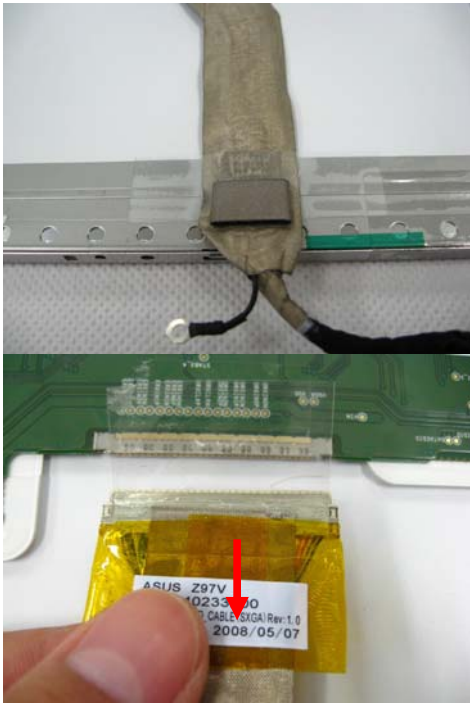
5. Remove 3 screws here.



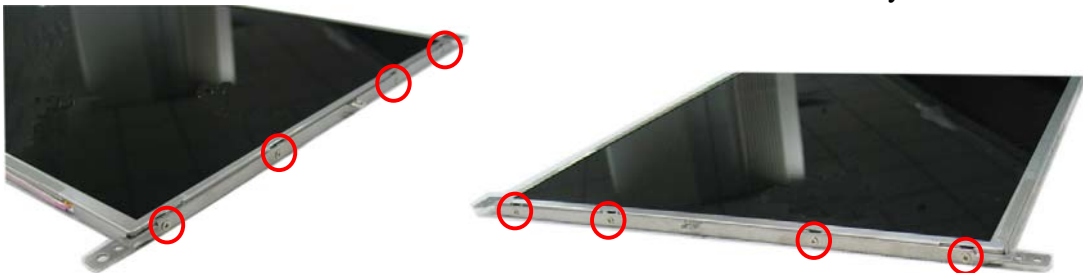
6. Take away the LCD panel.



7. Remove the white transparent Mylar here and disconnect Coaxial cable from LCD panel, and then remove the coaxial cable.



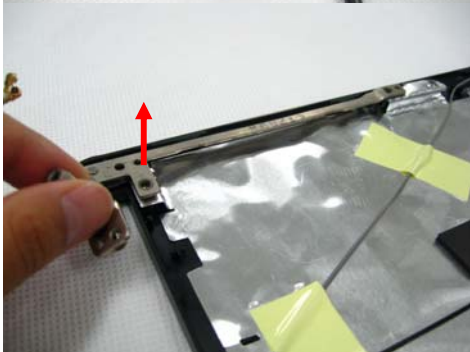
8. Remove 4 screws on each LCD bracket and take both brackets away.



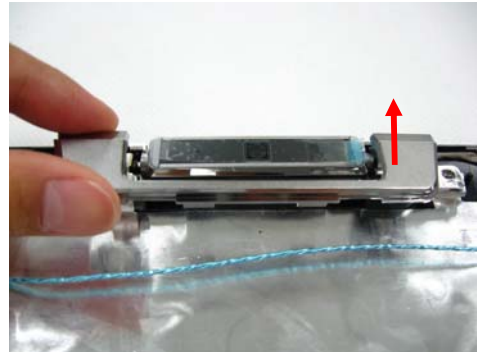
9. Remove 2 screws on LCD bracket and take away the bracket.



10. Remove 2 screws on each hinges and take them away.



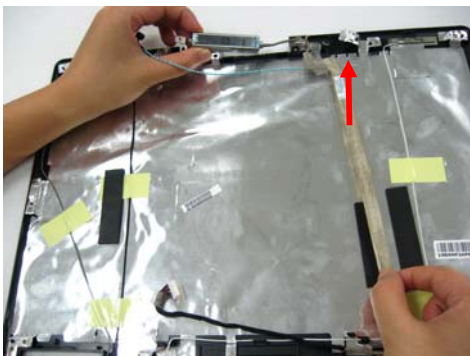
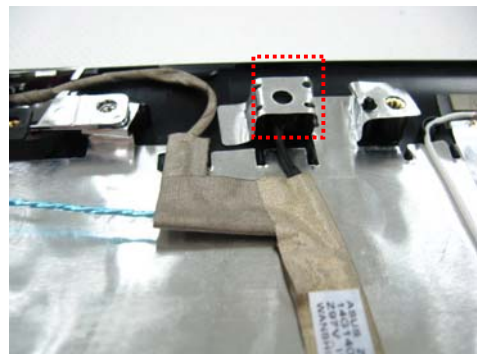
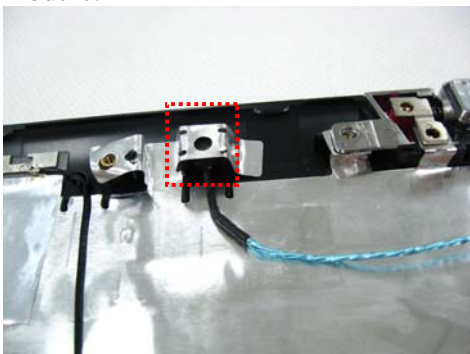
11. Tear off 4 pieces of tapes and remove the camera bezel.



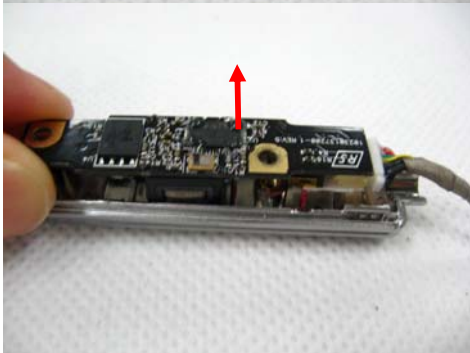
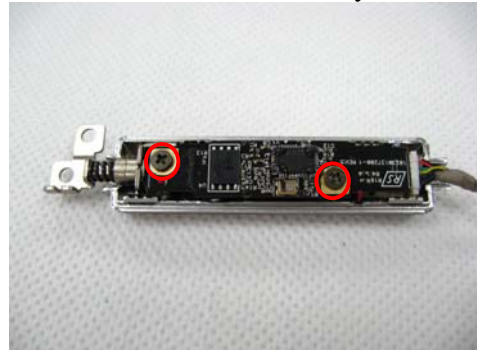
12. Remove 3 screws and take away the black bezel.



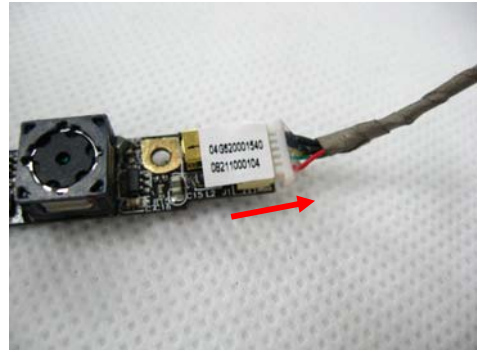
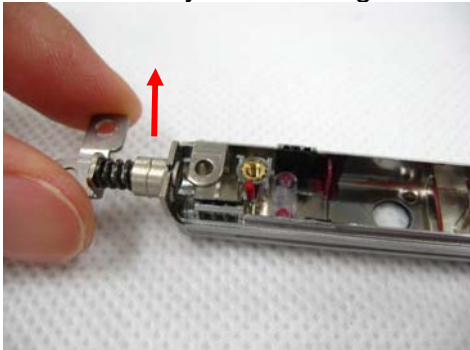
13. Tear up the gray tapes on microphone and take away the whole cameraµphone module.



12. Use disassembly toll open the camera latch and remove 2 screws, then take it away.



14. Take away camera hinge and disconnect camera cable.



15. Tear 5 pieces of tape and remove the white antenna, black antenna and gray antenna.

